

# Clinical Laboratory Product Catalog Volume 4





As an industry leader, **Azer Scientific** strives to offer top quality products at an exceptional value. We provide technical specifications, operating instructions, and complete descriptions to assist you in your buying decisions.

With over 35 years of laboratory expertise, our team is extremely knowledgeable, highly motivated, and well qualified to assist you. Our experience allows you to use us as a resource to identify and purchase the appropriate products for your application. Our professional staff is available to make your Azer buying experience convenient, efficient, and enjoyable.

If you do not see what you need in this catalog, please reach out to us. We specialize in developing new and innovative products, and our product line is continually growing to meet your needs.

Our mission is to consistently supply our customers with cost-effective, quality-engineered products, with exceptional customer service, and proven reliability. We value your business.



Azer Scientific is an  
**ISO 13485:2016  
Certified Company**



## BLOOD BANK

Reagents & Consumables	3
Equipment	4

## CHEMISTRY

Glucose Tolerance Testing	5
24 Hour Urine Testing	6
HPLC/LC-MS	7
Consumables	8

## CYTOLOGY

Consumables	11
Fixation & Staining	13
Stainers	15

## HEMATOLOGY

Microscope Slides	16
Staining	17
Manual Testing	19
Hematocrit & ESR Testing	20

## MICROBIOLOGY

Specimen Collection	21
Petri Dishes	23
Accessories	25
Incubators	26
Staining	29

## MOLECULAR DIAGNOSTICS

PCR	31
PCR Reagents	32
Equipment	33

## URINALYSIS

Specimen Collection	36
Kits & Testing	38

## GENERAL LABORATORY

Microscope Slides	40
Hemocytometers	42
Cover Glass	43
Staining Accessories	44
Slide Storage	45
Liquid Handling	46
Robotic Tips	55
Microplates	57
Centrifuge Tubes	60
Centrifuges	61
Stirrers	64
Rockers & Shakers	65
Balances	66
Vortex Mixers	67
Water Baths	67
Refrigerators & Freezers	69
Safety & Cleanup	70





## Blood Bank Saline

- Standard isotonic sodium chloride solution for automated and manual immunohematologic testing
- Meets NCCLS standard ASI/BB-1
- Buffered saline is ideal for enhancing weak agglutination reactions in blood bank procedures
- Both standard and buffered solutions remain stable without preservative
- Available in pH ranges of 6.5 to 7.0 and 7.0 to 7.2
- 2.5 gallon and 5 gallon cubes include a spigot for easy dispensing
- Scan QR Code on each label for lot specific Certificate of Analysis
- **Please Note:** Not for infusion, irrigation, or injection



Cat. No.	Description	UOM
<b>Standard Solution, 6.5 to 7.0 pH Range</b>		
ES124410L	Blood Bank Saline, 10 L cube	Each
ES124420L	Blood Bank Saline, 20 L cube	Each
ES12444G	Blood Bank Saline, gallon	4 x 1 gallon/case
<b>Buffered Solution, 7.0 to 7.2 pH Range</b>		
ES124310L	Blood Bank Buffered Saline, 10 L cube	Each
ES124320L	Blood Bank Buffered Saline, 20 L cube	Each

## Blood Bank Transfer Pipets

Blood Bank transfer pipets are made of low density polyethylene (LDPE) and feature a large bulb for maximum draw. These pipets deliver between 23-25 drops per mL, appropriate for blood banking and serology testing.

Available in 4mL and 5mL capacity, with or without graduations.



Cat. No.	Description	UOM
ES-0621	4 mL Transfer Pipet, non-graduated, non-sterile	5000/case
ES-0620	5 mL Transfer Pipet, graduated to 2 mL, non-sterile	5000/case
ES3360	5 mL Transfer Pipet, non-graduated, non-sterile	5000/case
ES-0136	5 mL Transfer Pipet, graduated to 1 mL, non-sterile	5000/case

## Glass Test Tubes

- Chemically inert tubes made from borosilicate glass
- Tubes have well-rounded bottoms and smooth, fire-polished rims
- Rigidly controlled dimension specifications for consistent results
- Boxes are designed to fit into most test tube dispensers
- Tubes are specially packaged to keep them particle free and prevent breakage



Cat. No.	Description	UOM
ES82756	Glass test tube, 10 x 75mm, 3mL volume	250/pack, 1000/case
ES82706	Glass test tube, 12 x 75mm, 5 mL volume	250/pack, 1000/case
ES82716	Glass test tube, 13 x 100mm, 7 mL volume	250/pack, 1000/case
ES82766	Glass test tube, 16 x 100mm, 10 mL volume	250/pack, 1000/case
ES82786	Glass test tube, 16 x 125mm, 14 mL volume	250/pack, 1000/case
ES82790	Glass test tube, 16 x 150mm, 16 mL volume	250/pack, 1000/case
ES82792	Glass test tube, 18 x 150mm, 25 mL volume	100/pack, 600/case

## Pasteur Pipettes & Latex Dropper Bulbs

- Made of soda lime glass
- Constricted suction end to retain cotton plug
- Latex dropper bulbs are flexible and easy to attach
- Pipette Packaging: 250/dispenser box



Cat. No.	Description	UOM
ES81242	Pasteur Pipette, 150 mm	1000/case
ES81247	Pasteur Pipette, 230 mm	1000/case
ES81961	Latex Bulb, 1 mL	72/pack
ES81962	Latex Bulb, 2 mL	72/pack

## Copper Sulfate, SG 1.053

For hemoglobin screening in men and women for blood donor suitability purposes.

Cat. No.	Description	UOM
ES933	Copper Sulfate, 16 oz.	Each
ES934	Copper Sulfate, 32 oz.	Each
ES935	Copper Sulfate, gallon	Each



## Plasma Thawer

- Features a microprocessor temperature controller with audible and visual alarms for high temperatures
- Two basket design accommodates up to 4 bags of plasma
- Cycle times can be set for 0 to 60 minutes, or HOLD which allows user to control the thawing time
- Polished stainless steel tank and baskets, bacteria resistant powder coated exterior
- Drain port and large chamber allow for easy cleaning of unit



Cat. No.	Description	UOM
ES24811	Plasma Thawer, 4 bag capacity, 120V	Each
ES24813	Plasma Thawer Acrylic Cover	Each
ES24817	Plasma Overwrap Bags	250/box

## Platelet Agitators & Incubators

- Inventory Management System makes it easy to maintain inventory and expiration date of platelets for efficient workflow
- Unit heats and cools without the use of refrigerant or a compressor
- Built-in thermal printer allows data to be printed for 1-7 day ranges
- 7" touch screen interface allows the user to view inventory levels, event and temperature logs. Logs can be downloaded to USB.
- Includes battery backup in the event of a power failure

**Small Agitator Capacity:** 6-12 Apherisis, 18 Random

**Large Agitator Capacity:** 8-16 Apherisis, 48 Random



Cat. No.	Description	UOM
ES24831	Platelet Agitator, small	Each
ES24832	Platelet Incubator, small	Each
ES24834	Platelet Agitator, large	Each
ES24835	Platelet Incubator, large	Each

## Digital Dry Baths & Blocks

- Offer digital control over both temperature and time, eliminating the need for an external thermometer or timer
- An easy-to-use block lifter, with a temperature insulated handle for quick, convenient exchange of blocks included
- Includes a built-in user recalibration function
- **Please Note:** Blocks sold separately from dry baths

**Temperature Range:** Ambient +5° to 150°C

**Temperature Increments:** 0.1°C

**Timer:** 1 to 999 minutes

**Operating Temperature:** +4°C to +65°C

**Electrical:** 115 V, 60 Hz

**Single Position Dimensions:** 7.8" x 9" x 3.2"

**Two Position Dimensions:** 8.7" x 10.3" x 3.2"

**Four Position Dimensions:** 8.7" x 14" x 3.2"



Cat. No.	Description	UOM
ES3363	One-Block Dry Bath	Each
ES3364	Two-Block Dry Bath	Each
ES3365	Four-Block Dry Bath	Each
ES3381	Solid Block (For slides/machining)	Each
ES3386	Block, 20 x 10 mm test tubes	Each
ES3387	Block, 20 x 13 mm test tubes	Each

## Touch Screen Blood Collection Mixer

- Features an easily viewable, bright color touch screen that displays current volume, percentage full, elapsed time and start time
- Integrated lifting handle and magnetically attached mixing tray
- Long-life interchangeable battery
- USB and ethernet data points



Cat. No.	Description	UOM
ES24850	Touch Screen Blood Collection Mixer	Each
ES24852S	Transport soft case	Each
ES24852H	Transport hard case	Each
ES24854	Calibration Kit	Each





## Flavored Glucose Drink

Our glucose tolerance drinks are the preferred choice when administering an oral glucose tolerance test.

- Features an easy-to-read volume indicator
- Available in orange, fruit punch, and lemon lime flavors
- Our lemon lime flavored drinks are dye-free
- Available in 50, 75, and 100 gram concentrations
- Shatter-proof plastic bottles
- BVO free and a certified Kosher product



Cat. No.	Description	UOM
10-O-050	Orange, 50 gram	24 x 10 oz. bottles/case
10-O-075	Orange, 75 gram	24 x 10 oz. bottles/case
10-O-100	Orange, 100 gram	24 x 10 oz. bottles/case
10-FP-050	Fruit Punch, 50 gram	24 x 10 oz. bottles/case
10-FP-075	Fruit Punch, 75 gram	24 x 10 oz. bottles/case
10-FP-100	Fruit Punch, 100 gram	24 x 10 oz. bottles/case
10-LL-050	Lemon Lime, 50 gram	24 x 10 oz. bottles/case
10-LL-075	Lemon Lime, 75 gram	24 x 10 oz. bottles/case
10-LL-100	Lemon Lime, 100 gram	24 x 10 oz. bottles/case

## Simply Pure®

Azer Scientific's exclusive Simply Pure® offers a reliable alternative for patients allergic to citric acid or other additives.

- Features an easy-to-read volume indicator
- Available in 50 and 100 gram concentrations
- Shatter-proof plastic bottles
- Free of BVO, citric acid, food dyes, and artificial flavors
- Certified Kosher product



Cat. No.	Description	UOM
10-SP-050	Simply Pure®, 50 gram	24 x 10 oz. bottles/case
10-SP-100	Simply Pure®, 100 gram	24 x 10 oz. bottles/case

All of our glucose tolerance beverages are manufactured according to WHO and ADA standards in an FDA certified, pharmaceutical facility to ensure the highest quality product on the market.

Expiration date determined via rigorous accelerated and real-time stability studies. Glucose concentration of every batch verified by a GMP certified laboratory.



She provides the best for  
her little bundle of joy.

She deserves the  
best from us.

*Simply Pure®*

A glucose tolerance beverage from Azer Scientific,  
free of citric acid, dyes, artificial flavorings, and BVO.



## 24 Hour Urine Collection Containers

- Manufactured from amber HDPE
- Feature graduation marks
- 70 mm white HDPE closure
- Available with or without a pour spout

Cat. No.	Description	UOM
ES3000	24 Hour Urine Container, vertical, 3 L	40/case
ES3001	24 Hour Urine Container, horizontal, 3.5 L	40/case
ES3002	24 Hour Urine Container, pour spout cap, horizontal, 3.5 L	40/case
ES3003P	24 Hour Urine Container, pour spout cap, vertical, 3.0 L	40/case
ES3004P	24 Hour Urine Container, pour spout cap, vertical, 3.5 L	40/case



## 24 Hour Urine Collection Containers with Integrated HCl

- Features a closed delivery system with 30 mL of 6N HCl for urine collection requiring the use of an HCl preservative
- Protects both patients and laboratory staff

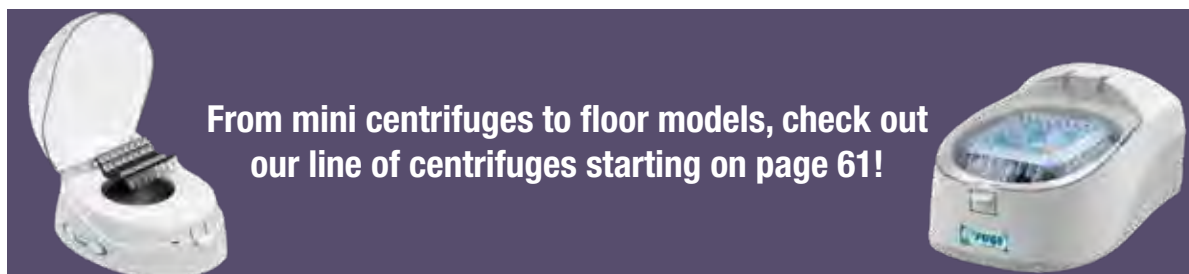
Cat. No.	Description	UOM
ES62310	24 Hour Urine Container, integrated HCl, horizontal, 3.5 L	20/case



## Dual Preservative 24 Hour Urine Collection System

- Allows for the collection of a 24 hour sample for multiple assays that require different preservatives or preparations
- Reduces time it takes to collect samples and speeds the diagnosis and treatment process
- 2 liter keyed bottles designed to lock together and stay firmly oriented
- Labels, packaging and transport accessories, and instructions are provided with each collection system

Cat. No.	Description	UOM
ES62314	24 Hour Urine Container, split collection system, assembled	4/case
ES62315	24 Hour Urine Container, split collection system, ready-to-assemble	5/case







## Pristine™ HPLC & LC-MS Grade Solvents

### HPLC Solvents

- ACS Certified
- Low UV absorbance, High GC assay
- Low water content and residue after evaporation
- Packaged with Nitrogen & Sub-micron filtered

### LC-MS Solvents

- No LC-MS TIC signals higher than 100ppb Reserpine
- No LC-MS TIC signals higher than 50ppb Reserpine (ESI + mode)
- 50ppb 4-Nitrophenol (ESI - mode)
- Very low metal concentration (<100ppb)
- Low Particles

Actual Lot Analysis  
printed on every label

	HPLC	LC-MS	
Description	Cat. No.	Cat. No.	UOM
Acetonitrile	-	1930-1	1 Liter, 6/case
	1910-5	1930-5	4 Liter, 4/case
Methanol	-	1935-1	1 Liter, 6/case
	1915-5	1935-5	4 Liter, 4/case
Water	-	1939-1	1 Liter, 6/case
	1919-5	1939-5	4 Liter, 4/case
Isopropyl Alcohol	1914-5	-	4 Liter, 4/case
Dichloromethane	1913-5	-	4 Liter, 4/case
N-Hexane 95%	1916-5	-	4 Liter, 4/case
Tetrahydrofuran with BHT	1917-5	-	4 Liter, 4/case
* Tetrahydrofuran	1918-5	-	4 Liter, 4/case
* N-Heptane	1920-5	-	4 Liter, 4/case

\* Coming soon!



## Autosampler Glass Vials

- 9 mm glass screw neck vial, 12x32mm
- Identify each sample with graduated write on patch
- Made from Type 1 borosilicate glass
- Amber vials are available for samples that are sensitive to light
- Caps with slit make it easier for needle penetration
- Combo pack includes 9mm Blue Screw Caps without slit Red PTFE/White Silicone Septa



Cat. No.	Description	UOM
ES10700	2 mL, clear, combo pack with 9mm blue screw caps without slit, Septa	100 caps and 100 vials/pack
ES10701	2 mL, clear, combo pack with 9mm blue screw caps with slit, Septa	100 caps and 100 vials/pack
ES10700AM	2 mL, amber, combo pack with 9mm blue screw caps without slit, Septa	100 caps and 100 vials/pack
ES10701AM	2 mL, amber, combo pack with 9mm blue screw caps with slit, Septa	100 caps and 100 vials/pack

## Autosampler Glass Inserts

- Clear glass inserts for 9mm vials
- Used with vials to allow for maximum sample recovery and sample removal
- 250 µL Glass Insert with bottom spring
- 50 µL Flat bottom Insert



Cat. No.	Description	UOM
ES10751	250 µL glass insert with bottom spring	100/pack
ES10753	350 µL flat bottom insert	100/pack



## Sapphire Syringe Filters

- Available in a variety of membrane types, porosities and diameters
- All syringe filters have luer-lock connections with polypropylene housings
- Filters are molded in the housings, providing a reliable seal without the use of adhesives
- Individually packed in peel-to-open paper/plastic blister packs
- Supplied sterile (gamma irradiated)

### PES (Polyethersulfone)

Low affinity for proteins and extractables

- Faster flow rate than PDVF
- Pre-filtration and filtration of buffers and culture media
- Purify and sterilize aqueous solutions and/or biological samples

### PVDF (Polyvinylidene)

Low protein-binding for filtration of non-aggressive aqueous and mild organic solutions

- Maximizes protein recovery
- High temperature filtration
- Protein-based samples with high non-specific binding

### NYLON

Universal application for analytical procedures

- Chemical and beverage filtration
- HPLC and biological sample preparation



PES				PVDF				Nylon			
Cat. No.	Pore Size	Diameter	UOM	Cat. No.	Pore Size	Diameter	UOM	Cat. No.	Pore Size	Diameter	UOM
ES58602PE	0.22 µm	13mm	100/pack	ES58602PV	0.22 µm	13mm	100/pack	ES58602NY	0.22 µm	13mm	100/pack
ES58603PE	0.45 µm	13mm	100/pack	ES58603PV	0.45 µm	13mm	100/pack	ES58603NY	0.45 µm	13mm	100/pack
ES58606PE	0.22 µm	33mm	50/pack	ES58606PV	0.22 µm	33mm	50/pack	ES58606NY	0.22 µm	33mm	50/pack
ES58607PE	0.45 µm	33 mm	50/pack	ES58607PV	0.45 µm	33mm	50/pack	ES58607NY	0.45 µm	33mm	50/pack

## Glass Test Tubes

- Feature well-rounded bottoms and smooth fire-polished rims
- Made from quality borosilicate glass to reduce pH changes and contaminants



### SafeShip™ Packaging

1. Double-wall cardboard for enhanced durability.
2. A double-wall tray on the top & bottom tightly secures the internal boxes.
3. Tubes are oriented vertically so they do not grind together.
4. Dividers and liners prevent internal boxes from shifting.

Cat. No.	Description	UOM
ES82756	Glass Test Tube, 10 x 75 mm	1000/case
ES82706	Glass Test Tube, 12 x 75 mm	1000/case
ES82716	Glass Test Tube, 13 x 100 mm	1000/case
ES82766	Glass Test Tube, 16 x 100 mm	1000/case
ES82786	Glass Test Tube, 16 x 125 mm	1000/case
ES82790	Glass Test Tube, 16 x 150 mm	1000/case
ES82792	Glass Test Tube, 18 x 150 mm	600/case

## Test Tube Caps

- **ES3494 & ES82520:** Two flexible flanges provide tight seal in test tubes, centrifuge tubes, and round cuvettes
- **ES84566:** For recapping most 12, 13, and 16 mm evacuated glass blood collection tubes. Flexible closures protect from aerosols of highly infectious microorganisms.
- **ES82521 & ES82510:** For recapping blood drawing tubes, glass test tubes, and plastic culture tubes
- **ES82502:** For recapping most 13 mm and 16 mm O.D. evacuated glass blood collection tubes. Can also be used on most 12 mm plastic test tubes.
- All caps are available in additional colors. Please contact us or visit our website to learn more.



Cat. No.	Description	UOM
ES3494	Flanged Plug Cap, 12 mm, natural	1000/bag
ES82520	Flanged Plug Cap, 13 mm, natural	1000/bag
ES84566	Universal Snap Cap, fits 12, 13, and 16 mm tubes, natural	1000/bag
ES82521N	Snap Cap, single thumb tab, 13 mm, natural	1000/bag
ES82510	Snap Cap, two thumb tabs, 12/13 mm, natural	1000/bag

IDS Beckman® is a registered trademark of Beckman Coulter, Inc.

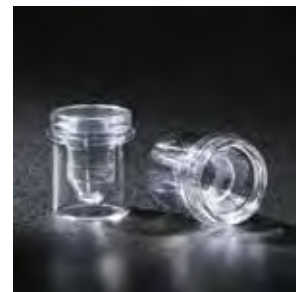




## Auto-Analyzer Sample Cups

Auto-analyzer sample cups are available in a variety of sizes and designed for use on the most popular analyzers in the chemistry laboratory.

Cat. No.	Description	UOM
ES10226	Auto-Analyzer Micro Sample Cup	1000/bag
ES3935	Auto-Analyzer Sample Cup, 0.25 mL	1000/bag
ES3936	Auto-Analyzer Sample Cup, 0.50 mL	1000/bag
ES10214	Auto-Analyzer Sample Cup, 1.5 mL	1000/bag
ES3937	Auto-Analyzer Sample Cup, 2.0 mL	1000/bag
ES10217	Auto-Analyzer Sample Cup, 3.0 mL (For use in Hitachi® analyzer)	1000/bag
ES3938	Auto-Analyzer Sample Cup, 4.0 mL	1000/bag
ES3942	Nesting Sample Cup, 1 mL, polystyrene (For use in 12 mm & 13 mm tubes)	1000/bag
ES3943	Nesting Sample Cup, 2 mL, polystyrene (For use in 16 mm tubes)	1000/bag
ES10291	Caps with Cross-Cuts, for sample cups (Fits sample cups size 0.25-2.0 mL)	1000/bag



## Infant Heel Warmers

Azer Scientific's Infant Heel Warmer is designed to safely and comfortably increase blood flow to the infant's heel area. By increasing blood flow, the potential for painful bruising, infection, or cartilage damage caused by frequent or repeated heel sticks is minimized. Our heel warmers quickly and gently reach the optimal desired temperature of 104°F.

- Conforms to infant's foot for even heat distribution
- Product is latex-free
- Trigger disk allows for quick and easy activation

Cat. No.	Description	UOM
ES23532	Infant Heel Warmer, liquid	25/pack, 4 packs/case





## Graduated Cylinder

- Measuring cylinder with spout and hexagonal base
- Made from Class A borosilicate glass with lot c

Cat. No.	Description	UOM
ES85124-0005HB	Graduated cylinder, 5 mL	Each
ES85124-0010HB	Graduated cylinder, 10 mL	Each
ES85124-0025HB	Graduated cylinder, 25 mL	Each
ES85124-0050HB	Graduated cylinder, 50 mL	Each
ES85124-0100HB	Graduated cylinder, 100 mL	Each
ES85124-0250HB	Graduated cylinder, 250 mL	Each
ES85124-0500HB	Graduated cylinder, 500 mL	Each
ES85124-1000HB	Graduated cylinder, 1000 mL	Each
ES85124-2000HB	Graduated cylinder, 2000 mL	Each



## Volumetric Pipette

- Volumetric for partial outflow
- Class A with lot certificate

Cat. No.	Description	UOM
ES85161-0001	Volumetric pipette, 1 mL, yellow marking	Each
ES85161-0002	Volumetric pipette, 2 mL, blue marking	Each
ES85161-0005	Volumetric pipette, 5 mL, red marking	Each
ES85161-0010	Volumetric pipette, 10 mL, orange marking	Each
ES85161-0025	Volumetric pipette, 25 mL, white marking	Each
ES85161-0050	Volumetric pipette, 50 mL, red marking	Each
ES85161-0100	Volumetric pipette, 100 mL, tyllow marking	Each



## Volumetric Flask- Amber

- Amber volumetric flask with one mark
- Glass stopper
- Class A with lot certificate

Cat. No.	Description	UOM
ES85105-0005AM	Volumetric flask, amber, 5 mL	Each
ES85105-0010AM	Volumetric flask, amber, 10 mL	Each
ES85105-0020AM	Volumetric flask, amber, 20 mL	Each
ES85105-0025AM	Volumetric flask, amber, 25 mL	Each
ES85105-0050AM	Volumetric flask, amber, 50 mL	Each
ES85105-0100AM	Volumetric flask, amber, 100 mL	Each
ES85105-0200AM	Volumetric flask, amber, 200 mL	Each
ES85105-0250AM	Volumetric flask, amber, 250 mL	Each
ES85105-0500AM	Volumetric flask, amber, 500 mL	Each
ES85105-1000AM	Volumetric flask, amber, 1000 mL	Each
ES85105-2000AM	Volumetric flask, amber, 2000 mL	Each
ES85105-3000AM	Volumetric flask, amber, 3000 mL	Each
ES85105-5000AM	Volumetric flask, amber, 5000 mL	Each



## Volumetric Flask- Clear

- Clear volumetric flask with one mark
- Glass stopper
- Class A with lot certificate

Cat. No.	Description	UOM
ES85105-0005G	Volumetric flask, clear, 5 mL	Each
ES85105-0010G	Volumetric flask, clear, 10 mL	Each
ES85105-0020G	Volumetric flask, clear, 20 mL	Each
ES85105-0025G	Volumetric flask, clear, 25 mL	Each
ES81505-0050G	Volumetric flask, clear, 50 mL	Each
ES85105-0100G	Volumetric flask, clear, 100 mL	Each
ES85105-0200G	Volumetric flask, clear, 200 mL	Each
ES85105-0250G	Volumetric flask, clear, 250 mL	Each
ES85105-0500G	Volumetric flask, clear, 500 mL	Each
ES85105-1000G	Volumetric flask, clear, 1000 mL	Each
ES85105-2000G	Volumetric flask, clear, 2000 mL	Each
ES85105-3000G	Volumetric flask, clear, 3000 mL	Each
ES85105-5000G	Volumetric flask, clear, 5000 mL	Each



## Chromatography Columns

- Made from 3.3 borosilicate heat resistant glass
- With socket and without frit

Cat. No.	Description	UOM
ES85168-20010	Chromatography column with socket, 200 mm effective length x 10 mm column diameter, 14/23 neck size	Each
ES85168-20015	Chromatography column with socket, 200 mm effective length x 15 mm column diameter, 14/23 neck size	Each
ES85168-40030	Chromatography column with socket, 400 mm effective length x 30 mm column diameter, 29/32 neck size	Each
ES85168-60030	Chromatography column with socket, 600 mm effective length x 30 mm column diameter, 29/32 neck size	Each
ES85168-80040	Chromatography column with socket, 800 mm effective length x 40 mm column diameter, 29/32 neck size	Each







## CerviSoft® Foam Cytology Swab

- For cervical specimen collection
- Non-abrasive foam tip is gentle on patients
- Foam head readily releases cells onto slides
- Polystyrene handle
- Measures 7" in length
- Sterile, individually wrapped



Cat. No.	Description	UOM
ES31201	7" CerviSoft® Foam Cytology Swab	100/box, 10 boxes/case

## Cytology Brushes

### Histobrush® Tapered Cytology Brush

- For cervical, Pap smear, or buccal cell collection
- Soft tapered nylon tip, polystyrene handle
- Measures 7" in length
- Sterile



### Rovers® EndoCervex-Brush®

- Ideal for chlamydia and gonorrhea testing, cellular collection for Pap smear testing, liquid-based Pap preparation, and traditional slide preparation
- Tip and handle made of polypropylene
- Bristle head is stiff, yet flexible; detachable after specimen collection
- Measures 8" in length
- Non-sterile



### Rovers® Combination Cervex-Brush

- For the collection of both ectocervical and endocervical cells for Pap smears
- Removable tip allows for use with both liquid-based and conventional cervical cytology tests
- Plastic bristles allow for easy transfer of specimen to glass slides or preservative fluid
- Measures 8" in length
- Non-sterile



Cat. No.	Description	UOM
ES31203	7" Histobrush® Cytology Brush	100/box, 10 boxes/case
ES31205	8" Endocervex® Cytology Brush	50/bag, 10/bags/case
ES31223	8" Rovers® Combination Cervex Brush	25/bag, 4 bags/case

## Pap Jars

- Pre-filled with 25 mL of 95% reagent grade alcohol
- Securely holds up to 4 standard slides
- Screw top closure for safe, leak-resistant transportation of specimens

Cat. No.	Description	UOM
ES31210	Pap jar, standard lid (blue)	50/tray, 100/case
ES31214	Pap jar, locking lid (pink)	50/tray, 100/case
ES31211	Pap jar, empty (blue)	1000/case



## Cytology Spin Slides

- Compatible with the Shandon® and Stat-Spin® cyto-centrifuge, the Wescor Cyto-systems, and Hettich
- Features defined markings for optimal operation and each circle is specifically marked to easily locate the centrifuged specimen
- **Packaging:** 72/box, 2 boxes/case



Cat. No.	Description	UOM
ESCS-096	Single well, untreated, compatible with Shandon®, Stat-Spin and Hettich	144/case
ESCS-097	Double well, untreated, compatible with Shandon®, Stat-Spin and Hettich	144/case
ESCS-098	Single well, treated, compatible with Shandon®, Stat-Spin and Hettich	144/case
ESCS-099	Double well, treated, compatible with Shandon®, Stat-Spin and Hettich	144/case
ESCS-090	Single well, untreated, compatible with Wescor	144/case
ESCS-091	Single well, treated, compatible with Wescor	144/case

## Centrifuge Tubes

- Our 15 mL and 50 mL conical tubes are made of clear polypropylene and feature printed graduation marks
- Gamma radiation sterilized; Non-pyrogenic
- Max RCF 12,00xg
- **Working temperature:** 0-40°C



Cat. No.	Description	UOM
ES-9151N	Centrifuge Tube, flat cap, 15 mL, sterile, racked	50/rack, 500/case
ES-9152N	Centrifuge Tube, flat cap, 15 mL, sterile, bulk	50/bag, 500/case
ES-9501N	Centrifuge Tube, flat cap, 50 mL, sterile, racked	25/rack, 500/case
ES-9502N	Centrifuge Tube, flat cap, 50 mL, sterile, bulk	25/bag, 500/case



## Cytology Funnels (Wescor Cyto-System)

Designed for compatibility with the Wescor Cyto-System, these funnels will snap quickly in place allowing the pad to align correctly with the sample funnel.

- Made with a compression ring around the sample hole in order to better control the rate of absorption
- Two ports, one in the sample well and one in the tunnel, provide great versatility
- Samples are loaded directly through the chamber caps to prevent spilling
- Caps provide added safety to the operator
- Large, centered cell deposit area allows for easy and accurate screening

Cat. No.	Description	UOM
ES33271	Single Funnel (Wescor) w/ white filter paper and cap	48/case
ES33275	White Filter Paper for Wescor cytology funnel	100/case



## Cytology Funnels (Shandon Cyto-Spin®)

Fully compatible with the Shandon CytoSpin® Centrifuge, our single and double cytology funnels can be used to deposit a thin layer of cells in a clearly defined area of a microscope slide. The filter card absorbs any excess fluid. No alignment necessary. Packaged with closure caps to seal in specimen for added protection.

All components are also available separately.  
(Please see Cytology Funnel Accessories)

**Single Cytology Funnel (with white filter card and cap):** for use with sample volumes up to 0.5 mL. It provides a cell deposition area of 6 mm (28 mm squared), and can be use with all stainless steel slide clips. Includes white filter card and cap.

**Single Cytology Funnel (with brown filter card and cap):** for use with sample volumes up to 0.4 mL, such as spinal fluid samples. It allows for a slower absorption of fluids.

**Double Cytology Funnel (with disposable sample chamber):** allows for two samples to be run simultaneously on a single slide and is ideal for immunohistochemistry work. The double funnel provides a cell deposition area of 6 mm (28 mm squared) for sample volumes of up to 0.5 mL.

**Standard Funnel** can be used with stainless steel slide clip.  
**All plastic Funnel** do not need a metal clip.

Cat. No.	Description	UOM
ES33210	Standard Single Funnel w/ white filter and cap	500/case
ES33211	Standard Single Funnel w/ brown filter and cap	500/case
ES33213	Standard Double Funnel w/ white filter and cap	500/case
ES33230	All Plastic Single Funnel w/ white filter and cap	480/case
ES33231	All Plastic Single Funnel w/ brown filter and cap	480/case
ES33233	All Plastic Double Funnel w/ white filter and cap	480/case

Cyto-Spin® is a registered trademark of Thermo Shandon.

## Cytology Funnel Accessories

Cat. No.	Description	UOM
ES33212	Standard Single Funnel	500/case
ES33214	Standard Double Funnel	500/case
ES33232	All Plastic Single Funnel	500/case
ES33234	All Plastic Double Funnel	500/case
ES33240	Base	500/case
ES33241	Cap	500/case
ES33242	White Filter Paper (for single funnel)	200/case
ES33243	Brown Filter Paper (for single funnel)	200/case
ES33244	White Filter Paper (for double funnel)	200/case



Base

Cap





## Saccomanno's Fixative

Specifically designed for collection and fixation of cytology specimens, such as FNA's, urine, sputums, bronchial washings, pleural and peritoneal fluids.

Cat. No.	Description	UOM
PFS-20	Saccomanno's Fixative, 20 mL prefill	128/case
PFS-120	Saccomanno's Fixative, 120 mL prefill	48/case
ES727-16	Saccomanno's Fixative, 16 oz.	Each
ES727	Saccomanno's Fixative, gallon	Each

## Easy III™ Rapid Differential Stain

Azer Scientific offers Easy III™, a three-step, rapid differential stain. These stains and fixative are routinely used for differential staining of peripheral blood smears and bone marrow specimens.

- Extensive applicability in cytology for use in fine needle aspiration analysis
- Allows for processing of specimen to take place in 30 seconds
- Uses 1 fixative and 2 staining solutions to achieve desired results



Cat. No.	Description	UOM
ES902-3	Easy III Step Stain Set, 3 oz. bottles (Stat Pack)	Each
ES902-16	Easy III Step Stain Set, 16 oz.	Each
ES902	Easy III Step Stain Set, 16 oz.	10 sets/case
ES906	Easy III Fixative, 16 oz.	12 x 16 oz./case
ES907	Easy III Stain Solution I, 16 oz.	12 x 16 oz./case
ES908	Easy III Stain Solution II, 16 oz.	12 x 16 oz./case
ES903	Easy III Fixative, gallon	4 x 1 gallon/case
ES904	Easy III Stain Solution I, gallon	4 x 1 gallon/case
ES905	Easy III Stain Solution II, gallon	4 x 1 gallon/case

## Azer Cytology Preservative Solution

- Exclusive leak free duo-click container contains 30mL specially formulated preservative for the transport of urine specimens for cytology
- Interfering blood cells are gently lysed while somatic cells are preserved for manual or automated cytology processing

Cat. No.	Description	UOM
ES31219-120B	120 mL container with 30 mL fill	24/pack, 192/case

## Cytology Fixative Spray

- Ideal for routine cytological preparations
- Prepared cytology slides can be safely transported once coating is sprayed over the cytological smear

Cat. No.	Description	UOM
ES34841	Cytology Fixative Spray, 4 oz.	6 x 4 oz./case

## Papanicolaou Stains

This group of reagents provide excellent cytoplasmic staining of gynecological and non-gynecological samples. A wide range of formulations are available to allow the end user to select from various color intensities and hues.

**EA-36** and **EA-50** are used in conjunction with **OG-6** for gynecological cytology staining.

**EA-65** is used with **OG-6** for non-gynecological specimens.



Description	16 oz.	UOM	Gallon	UOM	2.5 Gallon	UOM
OG-6	ES712	4/case	ES713	4/case	ES714	Each
EA-36	ES715	4/case	ES716	4/case	-	Each
EA-50	ES717	4/case	ES718	4/case	ES719	Each
EA-65	ES720	4/case	ES721	Each	ES765	Each

## EASY Pap Cytology Stain

- A one step alternative to EA and OG staining
- Manufactured using only the highest quality raw materials using dyes certified by the Biological Stain Commission
- Each lot of stain undergoes a functionality test to ensure highest quality results

Cat. No.	Description	UOM
ES7036	EASY Pap Stain, 32 oz	12 x 32 oz/case
ES7037	EASY Pap Stain, gallon	4 x 1 gallon/case



## Slide Staining Jars

- Slide holder holds 12 slides and features a handle for safe and easy dipping of samples
- Each staining jar has a stable base allowing for less reagent use (about 80 mL)
- Slide staining kit includes 5 jars (one of each color), and 1 slide holder. Additional kit available with metal work station rack, which is also available separately.



Cat. No.	Description	UOM
ES4400AS	Slide Staining Kit, 5 jars and 1 slide holder	Each
ES4400KT	Slide Staining Jars Kit, 6 jars (1 of each and 2 white), 1 slide holder, 1 metal work station rack	Each
ES4400B	Slide Staining Jar, blue	6/case
ES4400G	Slide Staining Jar, green	6/case
ES4400P	Slide Staining Jar, pink	6/case
ES4400Y	Slide Staining Jar, yellow	6/case
ES4400W	Slide Staining Jar, white	6/case
ES4401	Slide holder	6/case
ES4400RK	Metal work station rack	Each

## Glass Staining Dishes

Our glass staining dishes are ideal for manual staining. Available in 20, 30, and 60 place configurations. Racks sold separately.



Cat. No.	Description	UOM
ES36970	Glass Stain Dish, 20 place	Each
ES36971	Glass Stain Dish, 30 place	Each
ES36973	Rack for 20 Place Dish	Each
ES36974	Rack for 30 Place Dish	Each

## Glass Coplin Jar

Each coplin jar encompasses wide, flat, and round bases. Able to hold up to 10 slides, back-to-back.

**Dimensions:** 3" high, 1.2" internal diameter



Cat. No.	Description	UOM
ES3086	Glass Coplin Jar	Each

## Rotofix 32 A Centrifuge

- Rotofix 32 A centrifuge with cytology package
- Includes: Centrifuge, 1 basic cytology rotor, 2 Cyto Clips 6-packs, 1 cell funnel disposable 50 pack

**Max. Capacity:** 4 x 100 mL

6 x 94 mL

**Speed:** 6,000 rpm/ 4,226 x g

**Temperature Control:** Ambient

**Dimensions:** 10 x 14 x 17 in.

- Rotofix 32 A centrifuge with shielded cytology rotor package
- Includes: Centrifuge, 1 shielded cytology rotor, 2 Cyto Clips 6-packs, 1 cell funnel disposable 50 pack



Cat. No.	Description	UOM
ES39931	Rotofix 32A centrifuge with cytology package with basic cytology rotor	Each
ES39931-S	Rotofix 32 A centrifuge with cytology package with shielded rotor	Each

Check out our selection of microscope slides and cover glass starting on page 40.







## AzerPath H&E Stainer

- Features a user-friendly operator interface with touch screen
- Compact design at only 34" wide
- Continuous loading of slides with the ability to set multiple protocols
- 2 water inlets
- Built-in fume extraction can easily connect to existing lab fume exhaust system
- Rinse water flow control programmable for one station, individually adjustable for five stations
- Up to 50 programs, with 50 steps per program



**Includes:** racks (2), containers with lids (24), water inlet tubes (2), drain fitting adapter (1), charcoal filter (1), power cord (1)

### Specifications

**Number of Stations:** 30  
**Number of Rinse Stations:** 5 (user-selectable)  
**Number of Load Stations:** 1  
**Number of Unload Stations:** 1  
**Reagent Container Volume:** 350 mL  
**Drying Station Temperature:** 40-70°C

### Dimensions

**Width:** 34"  
**Depth:** 25"  
**Height:** 18"  
**Weight:** 65 lbs  
**Electrical:** 115V

Cat. No.	Description	UOM
ES39320	AzerPath H&E Stainer, ST300	Each

## AzerPath Linear Stainer

- Provides consistent staining of slides in an easy-to-use compact design
- Fits on top of most cryostats
- Ideal for Mohs techniques, special staining, and general surgical pathology frozen sections
- Continuous loading of slides
- Features a holding station for up to 16 processed slides
- Programmable station timing from 2 to 300 seconds



**Includes:** stainless steel tank cover (1), reagent stations (14), rinse stations (3), slide carriers (3), exit tank (1), water inlet hose (1)

### Specifications

**Number of Reagent Stations:** 14  
**Number of Rinse Stations:** 3 (user-selectable)  
**Slide Carrier Capacity:** 4 slides  
**Reagent Container Volume:** 50 mL

### Dimensions

**Width:** 24.5"  
**Depth:** 8.5"  
**Height:** 11"  
**Weight:** 35 lbs

Cat. No.	Description	UOM
ES39300	AzerPath Linear Stainer, ST100	Each

To learn more about **AzerPath** Equipment from Azer Scientific, please contact us.  
Phone: 1-877-770-AZER E-Mail: Sales@AzerSci.com

Contact us for our Histology Catalog for our full line of Cytology and Histology products!

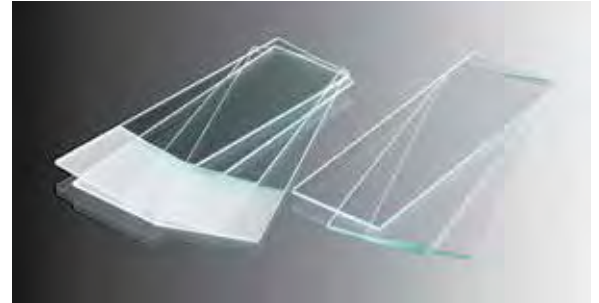


## Microscope Slides

Our plain and frosted slides are the ideal choice for manual hematology slide preparation. The slides are smooth and have a wettable surface, and burr-free, wet-grounded edges with 90° corners.

**Packaging:** 72 slides per box, 20 boxes per case

Cat. No.	Description	UOM
2752510	Plain Slide, 75 x 25 x 1 mm	72/box, 20 boxes/case, 1400/case
2752511	Frosted Slide, 75 x 25 x 1 mm	72/box, 20 boxes/case, 1400/case



## Hematology Analyzer Slides

### Microscope Slides for Sysmex® Hematology Slide Makers

- Clipped corners
- 75 x 25 x 1 mm
- Single frosted ends (available in white or blue)
- For use with ink-jet printers
- Features two printed stars to help prevent jamming in automated systems



### Microscope Slides for Beckman Coulter® Systems

- Clipped corners
- 75 x 25 x 1 mm
- Features two white, printed bars to help prevent jamming in automated systems



### Microscope Slides for Hematology Slide Makers using Thermal Printers

- Clipped corners
- 75 x 25 x 1 mm
- White frosted end
- For use with thermal printers
- Features two printed stars to help prevent jamming in automated systems



Cat. No.	Description	UOM
EMS200WS	Hematology Analyzer Slide, white frosted end, clipped corner (compatible with Sysmex® system)	72/box, 20 boxes/case, 1400/case
EMS200BS	Hematology Analyzer Slide, blue frosted end, clipped corner (compatible with Sysmex® system)	72/box, 20 boxes/case, 1400/case
EMS100TPB	Hematology Analyzer Slide, two printed bars, clipped corner (compatible with Beckman Coulter®)	72/box, 20 boxes/case, 1400/case
EMS100TH	Hematology Analyzer Slide, white frosted end, clipped corner (compatible with thermal printers)	72/box, 20 boxes/case, 1400/case

Beckman Coulter® is a registered trademarks of Beckman Coulter, Inc.  
Sysmex® is a registered trademark of Sysmex America, Inc.





## Giemsa Stain

Giemsa stain is a versatile polychromatic stain useful for the detection of parasites in blood smears and to differentiate nuclear and cytoplasmic morphology of blood cells. This stain can also be useful for the detection of microorganisms in gastric tissues. Staining results will vary based on staining time and the pH value of buffer used in stain protocols.

Cat. No.	Description	UOM
ES915-16	Giemsa Stain, 16 oz.	Each
ES915	Giemsa Stain, 32 oz.	Each
ES917	Giemsa Stain, gallon	4 x 1 gallon/case
ES916	Giemsa Stain, 2.5 gallon cube	Each

## Wright's Stain

Wright Stain is a classical formula of eosin and methylene blue stains which facilitates the differentiation of white blood cells and red blood cell morphology in fresh peripheral blood smears and bone marrow aspirates. In cytogenetics, this stain can also be used to stain chromosomes. This product requires the use of a phosphate buffer for best results. Suitable for manual and automated protocols.

Cat. No.	Description	UOM
ES918	Wright's Stain, 32 oz.	12 x 32 oz. /case
ES920	Wright's Stain, gallon	4 x 1 gallon/case
ES919	Wright's Stain, 2.5 gallon cube	Each

## Wright-Giemsa Stain

The combination of Wright with Giemsa stain provides better stain intensity and cellular detail in peripheral blood and bone marrow smears than Wright and Giemsa stain individually. Wright-Giemsa stain will also stain parasites, bacteria and RBC inclusion bodies. This product requires the use of a phosphate buffer for best results. Suitable for manual and automated protocols.

Cat. No.	Description	UOM
ES921	Wright-Giemsa Stain, 32 oz.	Each
ES923	Wright-Giemsa Stain, gallon	4 x 1 gallon/case
ES922	Wright-Giemsa Stain, 2.5 gallon cube	Each

## Wright's Stain Fixative

Wright stain fixative fixes and prepares slides for staining. For use in manual procedures or on automated stainers.

Cat. No.	Description	UOM
ES938	Wright's Stain Fixative, gallon	4 x 1 gallon/case

## Hema-Tek® Stain Packs

Azer Scientific's stains for Hema-Tek® Automated Slide Stainer are specifically designed for use in the Hema-Tek I, II, 1000, and 2000. These hematology stain packs come in a convenient carton that contains a stain, buffer, and rinse solution. Each stain pack contains enough solution to complete 1,000 slides.

**Wright's Stain Pack:** dual-use stain for peripheral blood and bone marrow smears.

**Wright-Giemsa Stain Pack:** Wright-Giemsa formula offers enhanced differential staining used to detect parasites, fungi, viral inclusion bodies, and other organisms in blood smears.



Cat. No.	Description	UOM
ES900	Modified Wright's Stain Pack (stain, buffer, rinse)	5 packs/case
ES901	Modified Wright-Giemsa Stain Pack (stain, buffer, rinse)	5 packs/case

## Wescor® Stainer Hematology Solutions

Azer Scientific's Wescor® Hematology Stainer compatible reagents consist of separate eosin and thiazine (azure B, methylene blue) stains, plus a light eosin rinse, all of which is in aqueous solution. Anhydrous ethanol is used for fixation.

Cat. No.	Description	UOM
ES941	Hematology Stain, Solution A, Rinse (Wescor®)	12 x 16 oz./case
ES942	Hematology Stain, Solution A, Rinse (Wescor®)	4 x 1 gallon/case
ES943	Hematology Stain, Solution B, Thiazine	12 x 16 oz./case
ES944	Hematology Stain, Solution B, Thiazine	4 x 1 gallon/case
ES945	Hematology Stain, Solution C, Eosin	12 x 16 oz./case
ES947	Hematology Stain, Solution C, Eosin	4 x 1 gallon/case
ES946	Hematology Stain, Solution D, Fixative	12 x 16 oz./case
ES948	Hematology Stain, Solution D, Fixative	4 x 1 gallon/case

Hema-Tek® is a registered trademark of Siemens Healthcare Diagnostics, Inc.



## Phosphate Buffer

These buffers are used in manual Wright, Giemsa, and Wright-Giemsa staining protocols. Buffer can be used to dilute Wright-Giemsa stain or as a second step in routine staining before rinsing.

Cat. No.	Description	UOM
ES926	Phosphate Buffer (pH 6.4), gallon	4 x 1 gallon/case
ES927	Phosphate Buffer (pH 6.6), gallon	4 x 1 gallon/case
ES9275	Phosphate Buffer (pH 6.8), gallon	4 x 1 gallon/case
ES928	Phosphate Buffer (pH 7.2), gallon	4 x 1 gallon/case

## Hematology Rinse Solution

A neutral-buffered rinse solution for a final rinse in manual hematology staining techniques, resulting in less stain precipitate.

Cat. No.	Description	UOM
ES5571	Hematology Rinse Solution, pH 7.0, gallon	4 x 1 gallon/case
ES5572	Hematology Rinse Solution, pH 7.0, 5 gallon cube	Each

## Reticulocyte Stain

Reticulocyte stain is a New Methylene Blue (Brecher formula) supravital stain for calculating the number of circulating reticulocytes in peripheral blood.

Cat. No.	Description	UOM
ES924	Reticulocyte Stain, 125 mL	Each

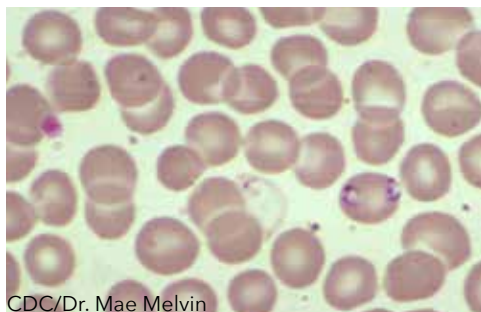
## Turk Blood Diluting Fluid

Turk Blood Diluting Fluid has a stain (gentian violet) plus acetic acid 6% for manual leukocyte counting.

Cat. No.	Description	UOM
ES930	Turk Blood Diluting Fluid, 4 oz.	Each
ES931	Turk Blood Diluting Fluid, 16 oz.	Each
ES932	Turk Blood Diluting Fluid, 32 oz.	Each

## Wright-Giemsa Control Slides

- Unstained slides ideal for quality control of Wright-Giemsa stain
- Contains many babesia for blood parasites inclusion bodies



CDC/Dr. Mae Melvin

Cat. No.	Description	UOM
ESCS-146	Wright-Giemsa Stain Control Slides	10/box

## Easy III™ Rapid Differential Stain

Azer Scientific offers Easy III™, a three-step, rapid differential stain. These stains and fixatives are routinely used for differential staining of peripheral blood smears and bone marrow specimens.

- Extensive applicability in cytology for use in fine needle aspiration analysis
- Allows for processing of specimen to take place in 30 seconds
- Uses 1 fixative and 2 staining solutions to achieve desired results



Cat. No.	Description	UOM
ES902-3	Easy III™ Stain Set, 3 oz. bottles (Stat Pack)	Each
ES902-16	Easy III™ Stain Set, 16 oz.	Each
ES902	Easy III™ Stain Set, 16 oz.	10 sets/case
ES906	Easy III™ Fixative, 16 oz. bottle	12 x 16 oz./case
ES907	Easy III™ Stain Solution I, 16 oz.	12 x 16 oz./case
ES908	Easy III™ Stain Solution II, 16 oz.	12 x 16 oz./case
ES903	Easy III™ Fixative, gallon	4 x 1 gallon/case
ES904	Easy III™ Stain Solution I, gallon	4 x 1 gallon/case
ES905	Easy III™ Stain Solution II, gallon	4 x 1 gallon/case

## Easy I Step Stain

Easy I Step contains buffer already dissolved in the stain.

**Wright's Easy I Step Stain:** contains methylene blue and is used to differentiate nuclear and/or cytoplasmic morphology of platelets, RBCs, WBCs, and parasites.

**Wright-Giemsa Easy I Step Stain:** a modified Romanowsky stain used for differentially staining the cellular elements of blood. When blood films are stained, the white blood cell nucleus and cytoplasm take on the characteristic blue or pink coloration.

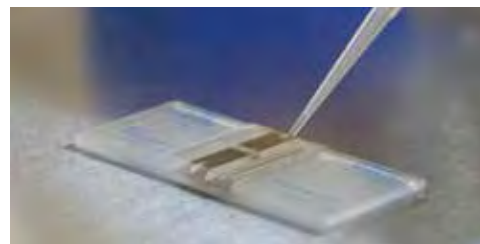
Cat. No.	Description	UOM
ES909	Wright's Stain (Red), 16 oz.	12 x 16 oz./case
ES910	Wright's Stain (Red), 32 oz.	12 x 32 oz./case
ES911	Wright's Stain (Red), gallon	4 x 1 gallon/case
ES912	Wright-Giemsa Stain (Blue), 16 oz.	12 x 16 oz./case
ES913	Wright-Giemsa Stain (Blue), 32 oz.	12 x 32 oz./case
ES914	Wright-Giemsa Stain (Blue), gallon	4 x 1 gallon/case





## Hemocytometers

Our hemocytometers for investigations of cell suspensions are equipped with two sets of grids, for duplicate determinations that are often required during in-vitro diagnostic applications. Counting grids are engraved into two ground and polished surfaces on the central ridge (chamber bottom). This central ridge is located between two elevated, also ground and polished, ridges. Each counting chamber includes two of the corresponding cover glass.



### Dark-Lined

Standard hemocytometers have counting grids which are engraved into the chamber bottom. Under the microscope, the counting grid appears as a grid of dark lines.

Cat. No.	Description	Corresponding Cover Glass	UOM
ES2010	Counting Chamber, Neubauer-improved, dark-lined	ES2026	Each
ES2011	Counting Chamber, Fuchs-Rosenthal, dark-lined	ES2026	Each
ES2012	Counting Chamber, Nageotte, dark-lined	ES2028	Each

### Bright-Lined

These hemocytometers have counting grids which are engraved into an annealed metal coating. Under normal microscope settings, the counting grid appears as a grid of bright lines. By altering the contrast, the counting grid can also be made to appear dark.

Cat. No.	Description	Corresponding Cover Glass	UOM
ES2013	Counting Chamber, Neubauer-improved, bright-lined	ES2026	Each
ES2014	Counting Chamber, Fuchs-Rosenthal, bright-lined	ES2026	Each
ES2015	Counting Chamber, Nageotte, bright-lined	ES2028	Each

### V-Slashes

V-slashes are the openings at the top and at the bottom of each plateau of the counting chamber. The V-slash facilitates filling the liquid and loading of the chamber.

Cat. No.	Description	Corresponding Cover Glass	UOM
ES2018	Counting Chamber, Neubauer-improved, V-slash and dark-lined	ES2026	Each
ES2019	Counting Chamber, Neubauer-improved, V-slash and bright-lined	ES2026	Each

## Sickle Cell Solubility Kits

Sickle Cell Solubility test kits can be used to detect the Sickle Cell trait (AS) of sickle cell disease (SS) hemoglobin, as well as other sickling hemoglobins. Confirmatory electrophoresis of positive blood samples must be completed because the method does not distinguish between AS and SS. A 10 place rack is also available to aid in testing.

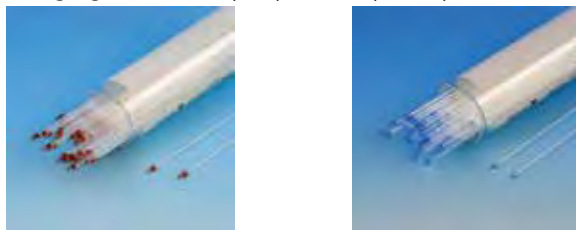
Cat. No.	Description	UOM
ES4420	Sickle Cell Solubility Kit, 12 tests	Each
ES4421	Sickle Cell Solubility Kit, 20 tests	Each
ES4422	Sickle Cell Solubility Kit, 100 tests	Each
ES4422AF	Sickle Cell Solubility Kit, azide-free, 100 tests	Each
ES4423	Sickle Cell Solubility Kit, 250 tests	Each
ES4423AF	Sickle Cell Solubility Kit, azide-free, 250 tests	Each
ES4424	Sickle Cell Control, lyophilized	Each
ES4420-R	Rack for Sickle Cell Kit, 10 place	Each





## Microhematocrit Capillary Tubes

- 100% plastic, complies with FDA, NIOSH, CDC, and OSHA safety recommendations
- Available plain or with an anticoagulant (sodium heparin)
- **Packaging:** 100 tubes per pack, 10 packs per case



Cat. No.	Description	UOM
ES22687	Microhematocrit Tube, blue tip	1000/case
ES22687H	Microhematocrit Tube, red tip, sodium heparinized	1000/case

## Sedi-Rate™ ESR System

- Safe, easy, and economical method for performing Westergren sedimentation rate
- Includes pipettes and citrate vials
- Pipettes are made of polystyrene and are graduated from 0 to 180 mm
- Vials are made of polystyrene and feature a pierceable, self-sealing stopper
- **Packaging:** 100 per pack, 10 packs per case



Cat. No.	Description	UOM
ES29702	Sedi-Rate™ ESR System	1000/case

## FlowTubes™ for Flow Cytometry

- FlowTubes™ are used to collect dissociated sample for processing in automated flow cytometry instruments
- Made of crystal clear polystyrene
- Designed for Fluorescence Activated Cell Sorting/ flow cytometry
- 5 mL capacity



Cat. No.	Description	UOM
ES58821	FlowTubes, with standard cap, sterile, 12 x 75mm	500/case
ES58822	FlowTubes, without cap, sterile, 12x75mm	1000/case
ES58822B	FlowTubes, without cap, non-sterile, 12 x 75mm	4000/case
ES58824	FlowTubes, with strainer cap, sterile, 12 x 75mm	500/case
ES58827	Standard cap for FlowTubes, two position	1000/case
ES58828	35 µm Strainer cap for FlowTubes, cap only	500/case

## Sedi-Rate™ ESR Starter Kit

Includes: 100 test kit, rack, leveling support, ESR pipettes and funnels

- Provides a safe, easy, and economical method for performing Westergren sedimentation rate
- Plastic components are shatter-proof
- Pierceable and resealable stopper
- Fibrous barrier protects against hazardous aerosols



Cat. No.	Description	UOM
ES29701	Sedi-Rate™ ESR Starter Kit	Each

## Hematocrit 200 Centrifuge

- Includes centrifuge, 1 hematocrit rotor and 1 lid
- Spin up to 24 capillaries per run and get results within seven minutes
- Rotor lid doubles as an evaluation disc

**Max. capacity:** 24 capillaries

**Max. speed:** 13,000 rpm/16,050 x g

**Temp. Control:** Ambient

**Dimensions:** 9 x 10 x 14 in



Cat. No.	Description	UOM
ES89475	Hematocrit 200 Centrifuge	Each





## HydraFlock® Swabs

- Ideal for a variety of clinical settings and diagnostic testing
- Multi-length split fibers provide a greater surface area than traditional nylon flock fibers
- Designed to enhance rapid absorption and quick release of biological specimens
- Manufactured using high-quality polyester material
- No excessive adhesives or fiber treatment in order to maintain specimen purity

## PurFlock Ultra® Swabs

- Ideal for PCR, molecular assays, DFA testing, forensic applications, and direct antigen testing
- Bi-component fiber design results in maximum specimen collection and elution
- Manufactured using high-quality polyester material
- No excessive adhesives or fiber treatment in order to maintain specimen purity



HydraFlock® Cat. No.	PurFlock Ultra® Cat. No.	Description	UOM
ES45210	ES45310	Standard tip, 80 mm breakpoint, sterile	50/box, 10 boxes/case
ES45230	ES45330	Standard tip, 80 mm breakpoint, non-sterile	100/box, 10 boxes/case
ES45211	ES45311	Mini tip, no breakpoint*, sterile	50/box, 10 boxes/case
ES45231	ES45331	Mini tip, no breakpoint*, non-sterile	100/box, 10 boxes/case
ES45212	ES45312	Ultra-fine tip, 100 mm breakpoint, sterile	50/box, 10 boxes/case
ES45232	ES45332	Ultra-fine tip, 100 mm breakpoint, non-sterile	100/box, 10 boxes/case
ES45213	ES45313	Micro ultra-fine tip, 100 mm breakpoint, sterile	50/box, 10 boxes/case
ES45233	ES45333	Micro ultra-fine tip, 100 mm breakpoint, non-sterile	100/box, 10 boxes/case
ES45214	ES45314	Large tip, 80 mm breakpoint, sterile	50/box, 10 boxes/case
ES45234	ES45334	Large tip, 80 mm breakpoint, non-sterile	100/box, 10 boxes/case
ES45215	ES45315	Elongated tip, 30 mm breakpoint, sterile	50/box, 10 boxes/case
ES45235	ES45335	Elongated tip, 30 mm breakpoint, non-sterile	100/box, 10 boxes/case
ES45216	ES45316	Elongated tip, 80 mm breakpoint, sterile	50/box, 10 boxes/case
ES45236	ES45336	Elongated tip, 80 mm breakpoint, non-sterile	100/box, 10 boxes/case
ES45217	ES45317	Elongated tip, 100 mm breakpoint, sterile	50/box, 10 boxes/case
ES45237	ES45337	Elongated tip, 100 mm breakpoint, non-sterile	100/box, 10 boxes/case
ES45218	ES45318	Elongated tip, no breakpoint*, sterile	50/box, 10 boxes/case
ES45238	ES45338	Elongated tip, no breakpoint*, non-sterile	100/box, 10 boxes/case

\* No breakpoint on handle. Breakpoint can be customized. Please contact us for more information



For the rest of your specimen collection needs,  
turn to page 36 for our selection of  
Urine Specimen Containers.



HydraFlock® and PurFlock Ultra® are registered trademarks of Puritan Medical Products Company LLC.



## Puritan UniTranz-RT™ Universal Transport Medium Systems

- For the collection, preservation, and transport of viruses, chlamydia, mycoplasma, and ureaplasma specimens at room temperature
- Allows for immediate testing or refrigerated storage
- Utilizes the high-performance PurFlock Ultra® flocked swab, or spun polyester swab
- Features a leak-proof, self-centering cap for easy swab removal and disposal
- Transport medium provides a pH balanced environment and contains antibiotics to inhibit bacterial or fungal contamination
- Vial contains glass beads to ensure faster sample dispersion and elution
- Each transport system is individually wrapped and all swabs are sterile



Cat. No.	Description	Swab Type	UOM
ES45811	UniTranz-RT™ Transport System, 1 mL	PurFlock Ultra®, large tip, 80 mm breakpoint	50/box, 6 boxes/case
ES45812	UniTranz-RT™ Transport System, 1 mL	PurFlock Ultra®, mini tip, 80 mm breakpoint	50/box, 6 boxes/case
ES45813	UniTranz-RT™ Transport System, 1 mL	PurFlock Ultra®, ultra-fine tip, 100 mm breakpoint	50/box, 6 boxes/case
ES45815	UniTranz-RT™ Transport System, 3 mL	PurFlock Ultra®, large tip, 80 mm breakpoint	50/box, 6 boxes/case
ES45816	UniTranz-RT™ Transport System, 3 mL	PurFlock Ultra®, mini tip, 80 mm breakpoint	50/box, 6 boxes/case
ES45817	UniTranz-RT™ Transport System, 3 mL	PurFlock Ultra®, ultra-fine tip, 100 mm breakpoint	50/box, 6 boxes/case
ES45818	UniTranz-RT™ Transport System, 3 mL	PurFlock Ultra®, ultra-fine tip (1) and elongated tip (1), 100 mm breakpoint	50/box, 6 boxes/case
ES45835	UniTranz-RT™ Transport System, 1 mL	Polyester swab, regular tip (2), 100 mm breakpoint	50/box, 6 boxes/case

## Puritan Opti-Swab™ Liquid Amies Transport System

- For the collection and transport of aerobic, anaerobic, and fastidious bacteria
- Utilizes the high-performance HydraFlock® flocked swab
- Features a leak-proof, self-centering cap for easy swab removal and disposal
- Vial is compatible with traditional and automated specimen processors
- Modified liquid amies medium provides a buffered environment to maintain bacterial viability of specimen
- Each transport system is individually wrapped and all swabs are sterile



Cat. No.	Description	Swab Type	UOM
ES45621	Opti-Swab™ Liquid Amies Transport System, 1 mL, white cap	HydraFlock®, elongated tip, 80 mm breakpoint, sterile	50/box, 6 boxes/case
ES45623	Opti-Swab™ Liquid Amies Transport System, 1 mL, green cap	HydraFlock®, mini tip, 80 mm breakpoint, sterile	50/box, 6 boxes/case
ES45625	Opti-Swab™ Liquid Amies Transport System, 1 mL, blue cap	HydraFlock®, ultra-fine tip, 100 mm breakpoint, sterile	50/box, 6 boxes/case

## Biohazard Bags

- 3 wall reclosable biohazard transport bags
- Feature separate sections for specimen and for paperwork

Cat. No.	Description	UOM
ESB6X9	Biohazard bag, 6" x 9"	1000/case
ESB6X9-AP	Biohazard bag, 6" x 9" with 3" x 5" absorbent pad	1000/case
ESB6X9-G	Biohazard bag, 6" x 9", green	1000/case
ESB8X10	Biohazard bag, 8" x 10"	1000/case
ESB12X15	Biohazard bag, 12" x 15"	1000/case
ESB12X15-G	Biohazard bag, 12" x 15", green	1000/case



HydraFlock® and PurFlock Ultra® are registered trademarks of Puritan Medical Products Company LLC.





## Disposable Petri Dishes

- Manufactured from virgin crystal grade polystyrene
- Optimal flatness and high optical clarity
- Variety of sizes to accommodate both specialized and routine needs
- Semi-stackable dishes feature a ring with a larger area than the base
- Fully-stackable dishes feature a recessed lid
- Slipable dishes feature a slip-ring to facilitate lateral or automated handling
- Dishes are sterilized by electron beam irradiation

## Petri Dishes, 100 x 15 mm

Cat. No.	Description	UOM
ES3501	100 x 15 mm, mono plate, slipable, sterile	20/sleeve, 500/case
ES3561	100 x 15 mm, mono plate, semi-stackable, sterile	20/sleeve, 500/case
ES3565	100 x 15 mm, mono plate, fully stackable, sterile	24/sleeve, 600/case
ES3516	100 x 15 mm, mono plate, fully stackable (updated), sterile	20/sleeve, 500/case



## Divided Petri Dishes, 100 x 15 mm

Cat. No.	Description	UOM
ES3502	100 x 15 mm, I-Plate, slipable, sterile	20/sleeve, 500/case
ES3562	100 x 15 mm, I-Plate, semi-stackable, sterile	20/sleeve, 500/case
ES3572	100 x 15 mm, I-Plate, fully stackable, sterile	24/sleeve, 600/case
ES3517	100 x 15 mm, I-Plate, fully stackable (updated), sterile	20/sleeve, 500/case
ES3503	100 x 15 mm, Y-Plate, slipable, sterile	20/sleeve, 500/case
ES3573	100 x 15 mm, Y-Plate, fully stackable, sterile	24/sleeve, 600/case
ES3518	100 x 15 mm, Y-Plate, fully stackable (updated), sterile	20/sleeve, 500/case
ES3504	100 x 15 mm, X-Plate, slipable, sterile	20/sleeve, 500/case
ES3574	100 x 15 mm, X-Plate, fully stackable, sterile	24/sleeve, 600/case
ES3519	100 x 15 mm, X-Plate, fully stackable (updated), sterile	20/sleeve, 500/case



## Petri Dishes, 60 x 15 mm (vented)

Cat. No.	Description	UOM
ES3512	60 x 15 mm, slipable, vented for aerobic use, sterile	20/sleeve, 500/case
ES3505	60 x 15 mm, fully stackable, vented for aerobic use, sterile	20/sleeve, 500/case
ES3515	60 x 15 mm, semi-stackable, vented for aerobic use, sterile	20/sleeve, 500/case

## Petri Dishes, 60 x 15 mm (non-vented)

Cat. No.	Description	UOM
ES3508	60 x 15 mm, semi-stackable, non-vented for anaerobic use, sterile	20/sleeve, 500/case
ES3506	60 x 15 mm, fully stackable, non-vented for anaerobic use, sterile	20/sleeve, 500/case





## Contact Plates, 60 x 15 mm

Contact plates feature a numbered and lettered 10 x 10 grid to aid in counting and locating of colonies. Available with standard flat bottom, or a convex bottom for less media usage.

Cat. No.	Description	UOM
ES3550	65 x 15 mm, flat bottom, sterile	20/sleeve, 500/case
ES3577	65 x 15 mm, convex bottom, center gated with outside grid, sterile	28/sleeve, 700/case
ES3585	65 x 15 mm, convex bottom, friction lock, sterile	28/sleeve, 700/case
ES3598	65 x 15 mm, convex bottom, rotation lock, sterile	28/sleeve, 700/case



## Petri Dishes with Chamber for CO<sub>2</sub> Tablet

The bottom dish features a chamber for anaerobic applications requiring a CO<sub>2</sub> tablet.

Cat. No.	Description	UOM
ES3596	75 x 50 mm, rectangular, chamber for CO <sub>2</sub> tablet, sterile	20/sleeve, 500/case
ES3509	100 x 15 mm, mono plate (undivided), slipable, chamber for CO <sub>2</sub> tablet, sterile	20/sleeve, 500/case
ES3552	100 x 15 mm, I-Plate, slipable, chamber for CO <sub>2</sub> tablet, sterile	20/sleeve, 500/case



## Special Sized Petri Dishes

Cat. No.	Description	UOM
ES3535	Petri Dish, 35 x 10 mm, sterile	20/sleeve, 500/case
ES3511	Petri Dish, 100 x 10 mm, sterile	30/sleeve, 750/case
ES3520	Petri Dish, 125 mL, 100 x 25 mm, fully stackable, vented, sterile	20/sleeve, 500/case
ES3525	Petri Dish "Jumbo Style", 150 x 15 mm, sterile	20/sleeve, 500/case
ES3527	Square Petri Dish with Grid, 100 x 100 mm, sterile	20/sleeve, 500/case



## Petri Dish With Absorbent Pad

- Ideal for culturing microorganisms on agar or broth-based media
- Designed to accommodate 47 mm diameter membrane filters
- Stackable and feature a frosted area on top of the lid for labeling
- Made of polystyrene

Cat. No.	Description	UOM
ES3671	Petri Dish with Absorbent Pad, sterile, 50 x 9 mm, stackable, sterile	20/sleeve, 500/case







## Infrared Microsterilizer

- Features an asbestos-free core element
- Uses infrared heating to produce temperatures up to 815°C
- Completely sterilizes loops and needles in 5 to 7 seconds
- For the microsterilization of platinum inoculation loops, needles, glass tubes and pipette mouths, and various metal and borosilicate glass instruments. NOT for use with plastics.
- Ceramic heating element is safely enclosed in a perforated, stainless steel guard chamber
- Can be used in anaerobic and aerobic chambers

**Chamber Diameter:** 0.5"/14mm

**Chamber Length:** 3.94"/100mm

**External Dimensions:** 4" x 6" x 6.5"

**Weight:** 2.9 lbs



Cat. No.	Description	UOM
ES3366	Infrared Microsterilizer	Each
ES3393	Heating Element	Each

## Agar

General purpose laboratory grade agar powder is an economical choice for creating custom selective media.

- Mixes easily with purified water
- Nutrient Agar contains all nutrients required to support the growth of a wide variety of bacteria and some fungi
- Sabouraud-Dextrose Agar contains all necessary nutrients to support the growth and maintenance of many fungi and yeast



Cat. No.	Description	UOM
ES17500-100G	Agar, bacteriological powder lab grade, 100 grams	Each
ES17500-500G	Agar, bacteriological powder lab grade, 500 grams	Each
ES17501-500G	Nutrient agar, 500 grams	Each
ES17554-500G	Sabouraud-Dextrose Agar, 500 grams	Each

## Inoculating Loops

- Pre-sterilized, disposable plastic loops
- Specially designed shaft makes it easier to grip, orientate, and guide through smooth streaking
- Loop surface is extremely smooth, with no flashing or burrs on loop head
- Flexible to allow for streaking, yet rigid enough for subsurface inoculation
- Packaging: 25 per sterile zip bag



Cat. No.	Description	UOM
ES49216	Inoculating Loops, 10 µL, flexible PP	1000/case
ES49211	Inoculating Loops, 1 µL, flexible PP	1000/case

## Parafilm® Sealing Film

- Stretchable and moisture-free sealing film
- Seals beakers, flasks, tubes, and petri dishes
- The dispenser is made of heavy duty crystal-clear acrylic
- Features a sharp, serrated blade
- Holds one or two 2" or one 4" roll

Cat. No.	Description	UOM
ES87651	Parafilm®, 2" width, 75 m length	Each
ES87653	Parafilm®, 4" width, 38 m length	Each
ES87654	Parafilm®, 4" width, 75 m length	Each
ES87659	Parafilm® Dispenser	Each

For specialty media products,  
check out our selection of  
HiMedia products at  
[AzerSci.com](http://AzerSci.com).



## Mini Digital CO<sub>2</sub> Incubator

- Accurate digital control of temperature and CO<sub>2</sub>
- Small footprint for small lab space (14.5 x 13")
- Accepts bottles and flasks up to 2 L
- Adjustable shelves easily remove for cleaning

**Temp. Range:** Ambient +10° to 55°C

**Temp. Increments:** 1°C

**Capacity:** 20 L or 0.8 cubic feet

**Dimensions (w x d x h):**

**Interior:** 26 x 23.5 x 33 cm

**Exterior:** 33.5 x 37 x 48 cm

**Weight:** 15 lbs (6.5 kg)

**Electrical:** 115 V, 50/60 Hz



Cat. No.	Description	UOM
ES59510-C	Mini Digital CO <sub>2</sub> Incubator, 115 V	Each
ES59519-C	Extra shelf for ES59510-C	Each

## Mini Incubator

- Compact incubator ideal for incubating culture flasks, dishes, test tubes, and plates
- Features a plexiglass viewing area in the door
- Easy-to-clean shelves can be placed at three levels within chamber
- Corrosion-resistant interior and dependable construction



Cat. No.	Description	UOM
ESI110120V	Mini Incubator, 0.375 cu. ft., 120 V	Each
ESI110SHF	Shelf for Mini Incubator, 22 x 18 cm	Each
ESW20110C	Safety Thermometer, non-toxic, (-20°C to 100°C)	Each

## Mini Digital Incubator

- Accurate digital temperature control
- Small footprint for small lab space (14.5 x 13")
- Accepts bottles and flasks up to 2 L
- Adjustable shelves easily remove for cleaning

**Temp. Range:** Ambient +5° to 60°C

**Temp. Increments:** 1°C

**Capacity:** 20 L or 0.8 cubic feet

**Dimensions (w x d x h):**

**Interior:** 26 x 23.5 x 33 cm

**Exterior:** 33.5 x 37 x 48 cm

**Weight:** 15 lbs (6.5 kg)

**Electrical:** 115 V, 50/60 Hz



Cat. No.	Description	UOM
ES59510	Mini Digital Incubator, 115 V	Each
ES59519	Shelf for Mini Incubator, 10.5" x 8"	Each

## Incu-Shaker Mini CO<sub>2</sub> Incubator

- Combines a precision CO<sub>2</sub> incubation chamber with an integral orbital shaker
- Adjustable pull out shelf

**Temp. Range:** Ambient +5° to 60°C

**Temp. Increments:** 1°C

**Capacity:** 46 L

**Dimensions (w x d x h):**

**Platform:** 9.5 x 11.5 in.

**Chamber:** 13.2 x 10.25 x 15.4 in

**Weight:** 90 lbs (40.1 kg)

**Electrical:** 115 V, 50/60 Hz



Cat. No.	Description	UOM
ES89366-CO2	Mini Digital Incubator, 115 V	Each





## SureTemp™ Dual Convection Incubators

- Each incubator is equipped with SureCheck™ data logging system for verification of chamber temperature
- Offers "Dual-Convection" technology
- Choose between mechanical convection mode or gravity convection mode

Cat. No.	ES59523-40	ES59523-70	ES59523-130
Description	40 Liters	70 Liters	130 Liters
External Dimensions	22.4 x 23.3 x 22.8 in 57 x 59.2 x 58 cm	26.4 x 23.3 x 26.8 in 67 x 59.2 x 68 cm	30.3 x 27.2 x 30.7 in 77 x 69.2 x 78 cm
Chamber Dimensions	13.7 x 13.7 x 13.7 in 35 x 35 x 35 cm	17.7 x 13.7 x 17.7 in 45 x 35 x 45 cm	21.7 x 17.7 x 21.7 in 55 x 45 x 55 cm
Weight	92.5 lns/ 42 kg	136.5 lbs/ 62 kg	154.5 lbs/ 70 kg
Temperature Range:	Ambient +5 to 75°C		
Temperature Accuracy:	±0.25°C*		
Temperature Uniformity:	±0.25°C*		
Temperature Increment:	0.1°C		
Temperature Stability:	0.1°C		
Time Range:	1 min. to 99 hours 59 min. or continuous		
Chamber Material	Stainless Steel		



Cat. No.	Description	UOM
ES59523-40-SH	Extra ashelf for ES59523-40	Each
ES59523-70-SH	Extra ashelf for ES59523-70	Each
ES59523-130-SH	Extra ashelf for ES59523-130	Each

## 2.5 ft<sup>3</sup> Digital Incubator

The 2.5 cu. ft. digital incubator comes in 115 V and 230 V (CE marked). Features a see-thru door.

**Temp. Range:** Ambient +10°C to 90°C

**Chamber Volume:** 2.5 cu. ft.

**Chamber Dimensions:** 17" x 17" x 15"

**Dimensions:** 19.125" x 23" x 21"



Cat. No.	Description	UOM
ES4519	2.5 ft <sup>3</sup> Digital Incubator, 115 V, 50-60 Hz	Each

## 2.5 ft<sup>3</sup> Analog Incubator

The 2.5 cu. ft. analog incubator is available in 115 V and 230 V (CE marked). Features a solid door.

**Temp. Range:** Ambient +10°C to 90°C

**Chamber Volume:** 2.5 cu. ft.

**Chamber Dimensions:** 17" x 17" x 15"

**Dimensions:** 19.125" x 23" x 21"



Cat. No.	Description	UOM
ES4507	2.5 ft <sup>3</sup> Analog Incubator, 115 V, 50-60 Hz	Each

## 5.0 ft<sup>3</sup> Analog Incubator

The 5.0 cu. ft. analog incubator is comes in 115 V and 230 V (CE marked). Available with see-thru door or solid door.

**Temp. Range:** Ambient +10°C to 90°C

**Chamber Volume:** 5.0 cu. ft.

**Chamber Dimensions:** 17" x 17" x 30"

**Dimensions:** 19.125" x 23" x 36"

Cat. No.	Description	UOM
ES4503	5.0 ft <sup>3</sup> Analog Incubator, solid door, 115 V, 50-60 Hz	Each
ES4505	5.0 ft <sup>3</sup> Analog Incubator, see-thru door, 115 V, 50-60 Hz	Each





## Mini Shaking Incubator

- Domed lid accepts flasks up to 1 L
- Compact unit, small footprint
- Unique magnetic platform & clamp system (clamps and magnetic platform sold separately)
- Platform features a non-slip, rubber coated surface ideal for petri dishes, culture flasks, and staining trays

**Temp. Range:** Ambient +5° to 70°C

**Temp. Increments:** 0.1°C

**Shaking Speed Range:** 30 to 300 rpm

**Exterior Dimensions (w x d x h):** 11" x 16.2" x 13"

**Weight:** 25 lbs (11.5 kg)

**Electrical:** 115 or 230 V, 50/60 Hz, 300W



Cat. No.	Description	UOM
ES89366	Mini Shaking Incubator	Each

## myTemp™ 65 HC Incubator

- Broad temperature range expands the use to both heating and cooling
- Built in internal outlet can be used to provide power to smaller instruments such as shakers, rockers, etc.
- Includes two stainless steel shelves

**Temp. Range:** Ambient 0° to 60°C

**Temp. Increments:** 0.1°C

**Temp. Uniformity:** ± 1.0°C (at 37°)

**Capacity:** 65L (2.3 cu.ft.)

**Exterior Dimensions (w x d x h):** 21.25" x 21" x 39.35"

**Weight:** 117 lbs (53 kg)

**Electrical:** 120 or 230 V, 50/60 Hz, 950W



Cat. No.	Description	UOM
ES59522	myTemp™ 65 heating and cooling digital incubator	Each
ES59522-SH	Extra shelf for ES59522, 12" x 15", stainless steel	Each

## Shaking Incubator with Heating & Cooling

- Features a powerful, brushless induction drive
- Capacity up to 5 x 2 L
- Unique magnetic platform & clamp system (clamps and magnetic platform sold separately)
- Platform features a non-slip, rubber coated surface ideal for petri dishes, culture flasks, and staining trays

**Temp. Range:** Ambient -5° to 60°C

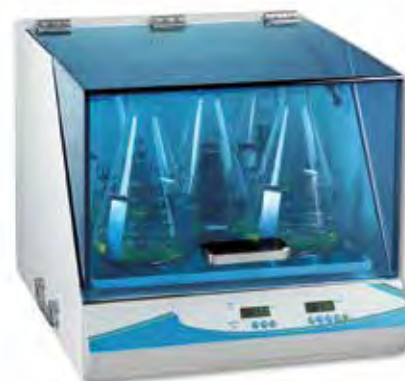
**Temp. Increments:** 0.1°C

**Shaking Speed Range:** 30 to 300 rpm

**Exterior Dimensions (w x d x h):** 20" x 31" x 22"

**Weight:** 170 lbs (78 kg)

**Electrical:** 120 or 230 V, 50/60 Hz, 950W



Cat. No.	Description	UOM
ES89363	Shaking Incubator with Heating & Cooling	Each

## Economy Incubators

The economy-sized digital or analog incubator is the ideal choice for small laboratories. Available in 115 V and 230 V (CE marked).

**Temp. Range:** Ambient +5°C to 60°C

**Chamber Volume:** 0.8 cu. ft.

**Chamber Dimensions:** 11.5" x 12" x 10.5"

**Dimensions:** 13" x 14" x 16.25"



Cat. No.	Description	UOM
ES4511	Economy Digital Incubator, 115 V, 50-60 Hz	Each
ES4501	Economy Analog Incubator, 115 V, 50-60 Hz	Each
ES4502	Economy Analog Incubator, 230 V, 50-60 Hz	Each





## Gram Staining

Kits and individual components for Gram staining.

**Gram Stain Kits** includes Crystal Violet, Iodine (stabilized or unstabilized), Decolorizer, and Safranin. Each component is packaged in an 8 oz. bottle with pour spout.

Cat. No.	Description	UOM
<b>Primary Stain</b>		
ES802	Crystal Violet, 8 oz.	4 x 8 oz./case
ES808	Crystal Violet, gallon	4 x 1 gallon/case
<b>Iodine</b>		
ES803	Iodine, stabilized, 8 oz.	4 x 8 oz./case
ES809	Iodine, stabilized, gallon	4 x 1 gallon/case
ES804	Iodine, unstabilized, 8 oz.	4 x 8 oz./case
ES810	Iodine, unstabilized, gallon	4 x 1 gallon/case
<b>Decolorizer</b>		
ES805	Decolorizer, 8 oz.	4 x 8 oz./case
ES811	Decolorizer, gallon	4 x 1 gallon/case
<b>Counterstain</b>		
ES806	Safranin, 8 oz.	4 x 8 oz./case
ES812	Safranin, gallon	4 x 1 gallon/case
<b>Gram Stain Kits</b>		
ES800	Gram Stain Kit, stabilized iodine	Each
ES801	Gram Stain Kit, unstabilized iodine	Each

## Fluorescent Staining Reagents

For the visualization of mycobacterium. Kit includes Auramine-O, Decolorizer, and Potassium Permanganate.

Cat. No.	Description	UOM
ES836	Rhodamine-Auramine Stain, w/ spout, 8 oz.	4 x 8 oz./case
ES838	Auramine-O Stain, w/ spout, 8 oz.	4 x 8 oz./case
ES839	Fluorescent Decolorizer, 1 gallon	Each
ES841	Fluorescent Decolorizer, w/ spout, 8 oz.	Each
ES843	Potassium Permanganate	Each
ES846	Auramine-Rhodamine Fluorescent Decolorizer	4 x 8 oz/case
ES854	Auramine-O Staining Kit	Each

## Hansel Stain (Eosinophil)

One step staining procedure for visualization of eosinophils.

Cat. No.	Description	UOM
ES852	Hansel Stain (Eosinophil), 4 oz.	4 x 4oz
ES936	Hansel Stain (Eosinophil), 16 oz.	Each

## Gomori Trichrome Stain

A rapid staining procedure which provides excellent differentiation of internal structures of intestinal parasites.

Cat. No.	Description	UOM
ES868	Gomori Trichrome Stain, 16 oz.	4 x 16 oz./case
ES874	Trichrome Decolorizer, gallon	Each

## Acid Fast Staining

Kits and individual components for acid fast staining.

**AFB Ziehl Neelsen Kit** includes Carbol Fuchsin-Ziehl-Neelsen (8 oz.), Decolorizer (8 oz.), and Methylene Blue (8 oz.).

**AFB Kinyoun Kit** includes Carbol-Kinyoun (8 oz.), Decolorizer (8 oz.), and Methylene Blue (8 oz.).

Cat. No.	Description	UOM
<b>Stains</b>		
ES807	Basic Fuchsin, 8 oz.	4 x 8 oz./case
ES813	Basic Fuchsin, gallon	4 x 1 gallon/case
ES819	Carbol-Kinyoun w/ spout, 8 oz.	4 x 8 oz./case
ES818	Carbol-Kinyoun Stain w/ spout, 16 oz.	4 x 16 oz./case
ES816	Carbol-Kinyoun Stain, gallon	4 x 1 gallon/case
ES823	Carbol Fuchsin-Ziehl-Neelsen w/ spout, 8 oz.	4 x 8 oz./case
ES820	Carbol Fuchsin-Ziehl-Neelsen, gallon	4 x 1 gallon/case
<b>Decolorizer</b>		
ES826	AFB Decolorizer, Kinyoun, 8 oz.	Each
ES847	AFB Decolorizer, Ziehl Neelsen, 8 oz.	4 x 8 oz./case
<b>Counter Stains</b>		
ES831	Methylene Blue, 8 oz.	4 x 8 oz./case
ES833	Brilliant Green, 8 oz.	Each
<b>AFB Kits</b>		
ES857	AFB Ziehl Neelsen Kit	Each
ES855	AFB Kinyoun Kit	Each

## Lugol's Iodine Solution

A non-specific contrast dye that can be used on fresh fecal specimens to detect common gastrointestinal parasites and protozoan cysts.

Cat. No.	Description	UOM
ES815	Lugol's Concentrate, 16 oz.	12 x 16 oz./case
ES862	Lugol's Iodine Working Solution, gallon	Each

## Malachite Green Solution

Assists with visualization of resistant bacterial endospores.

Cat. No.	Description	UOM
ES828	Malachite Green, 8 oz.	Each
ES827	Malachite Green, gallon	4 x 1 gallon

## Lacto Phenol Cotton Blue

Mounting medium and staining agent for use in the preparation of slides for microscopic examination of fungi. Fungal elements are stained intensely blue.

Cat. No.	Description	UOM
ES848	Lacto Phenol Cotton Blue, 4 oz.	4x 4oz/case



## Acid Fast Control Slide

- These unique slides simulate a clinical sputum smear with appropriate background material
- Two wells containing a positive and negative smear

Cat. No.	Description	UOM
ESCS-136	Acid Fast Stain Control Slides	10/box
ESCS-137	Acid Fast Stain Control Slides	50/box

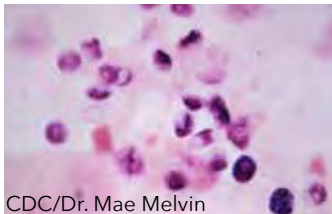
## Gram Stain Control Slide

- Each gram stain control slide has a gram negative and gram positive control area, with an additional 8 test areas for unknown samples.
- Slide has a frosted end for verification.

Cat. No.	Description	UOM
ESCS-140	Gram Stain Control Slides	10/box
ESCS-141	Gram Stain Control Slides	50/box

## Pneumocystis Control Slides

- Contain many organisms in a homogenate of lung tissue, similar to material received in the microbiology laboratory
- Suitable for standard staining methods
- Not recommended for monoclonal antibody and fluorescent method assays

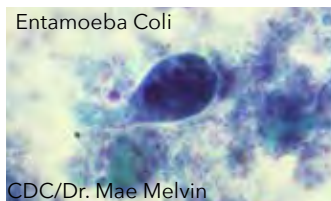


CDC/Dr. Mae Melvin

Cat. No.	Description	UOM
ESCS-145	Pneumocystis Carinii Stained Control Slides	10/box

## PVA Smears (Stained)

- Stained PVA prepared smears are stained with Trichrome stain and demonstrate commonly seen enteric parasites

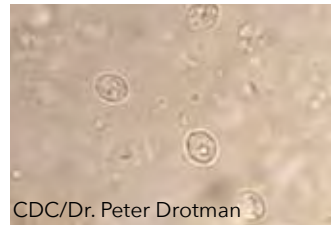


CDC/Dr. Mae Melvin

Cat. No.	Description	UOM
ESCS-157	Entamoeba Hartmanni Slide	2/pack
ESCS-158	Entamoeba Coli Slide	2/pack
ESCS-159	Endolimax Nana Slide	2/pack
ESCS-161	Giardia Lamblia Slide	2/pack
ESCS-162	Chilomastix Mesnili Slide	2/pack
ESCS-165	Iodamoeba Sps Slide	2/pack
ESCS-166	Cryptosporidium Sps Slide	2/pack
ESCS-168	Microsporidium Stained Slide	2/pack

## Cryptosporidium Control Slide

- Contain many typical organisms on each slide
- Each slide has a positive and negative well



CDC/Dr. Peter Drotman

Cat. No.	Description	UOM
ESCS-139	Cryptosporidium Control Slides	10/box

## Microsporidia Control Slide

- Each smear is fixed and ready to use as a control
- A negative smear is included on each slide

Cat. No.	Description	UOM
ESCS-143	Microsporidia Control Slides	10/box

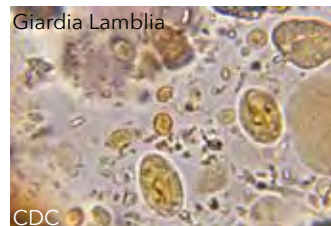
## Protozoa Stain Control Slide

- Validate laboratory staining methods with these PVA fixed protozoa control slides
- Each slide contains many Giardia Lamblia organisms
- Ideal for control of Trichrome or Hematoxylin staining procedures

Cat. No.	Description	UOM
ESCS-131	Protozoa Stain Control Slides	10/box
ESCS-135-25	Protozoa Stain Control Slides	25/box

## PVA Smears (Unstained)

- PVA prepared unstained control slides of commonly found enteric protozoa
- Excellent for use in any laboratory or teaching setting



CDC

Cat. No.	Description	UOM
ESCS-147	Iodamoeba Sps	5/box
ESCS-149	E. Hartmanni	5/box
ESCS-150	E. Coli	5/box
ESCS-151	Endolimax Nana	5/box
ESCS-152	D. Fragilis	5/box
ESCS-153	Giardia Lamblia	5/box
ESCS-154	Chilomastix Mesnili	5/box





## Sapphire Individual PCR Tubes

- Made from Polypropylene (PP)
- Thin-wall design helps liquid reach the target temperature quickly
- Reduces the evaporation of the reaction solution
- DNase, RNase, DNA free
- Autoclavable



Cat. No.	Description	UOM
ES53211	Individual PCR Tubes, 0.2mL, Flat Caps Attached	1,000/pack

## Sapphire PCR Well Plates

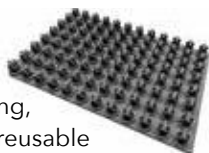
- High quality Polypropylene material to guarantee low protein absorption and the loss of liquid
- Specially designed for rapid thermal transfer
- White plates are ideal for qPCR
- Certified free of DNase, RNase, pyrogen, and human DNA



Cat. No.	Wells	Volume	Skirt	Color	Notch Position	UOM
ES53401	96 Well	0.2 mL	Non-skirted	Clear	H12	25/pack
ES53403	96 Well	0.1 mL	Semi skirted	Clear	A1	10/pack
ES53404	96 Well	0.2 mL	Semi skirted	Clear	A12	25/pack
ES53405	96 Well	0.2 mL	Skirted	Clear	H1	25/pack
ES53408	384 Well	0.1 mL	Skirted	Clear	A24, P24	50/pack

## CapMats

- 96-well sealing mat for round well plate
- Ideal for automation
- Septa allows for reliable automated sealing, resistance to coring, and is autoclavable reusable
- Non-perforated and non-sterile



Cat. No.	Description	UOM
ES53939	96-round well sealing mat with septa	10/pack, 5 packs/case

## Sapphire Sealing Films & Foils

### Films

- Perforated end tabs and a multiple split backing for accurate positioning and secure seal
- Less than .001% moisture permeable under high humidity conditions and less than .01% oxygen permeable
- DMSO resistant

### Foils

- Ideal for manual sealing during PCR work and also for high throughput applications
- Adhesive backing makes it easy to apply
- Pierceable with a pipet tip for easy access to sample
- DMSO resistant and no heat sealer needed

Cat. No.	Description	Temp. Range	UOM
ES53953	PCR sealing aluminum foil adhesive pierceable non-sterile	-80 to +120	100/pack
ES53957	Sealing film adhesive transparent non-sterile	-40 to +120	100/pack
ES53957-S	Sealing film adhesive transparent sterile	-40 to +120	100/pack
ES53955	PCR sealing film thermal transparent non-sterile	-70 to +100	100/pack
ES53955-S	PCR sealing film thermal transparent sterile	-70 to +100	100/pack

## Sapphire PCR Strips

- Made of clear Polypropylene (PP)
- Reduces the evaporation of the reaction solution
- Increase the real-time PCR fluorescent signal strength
- DNase, RNase, DNA free
- Autoclavable



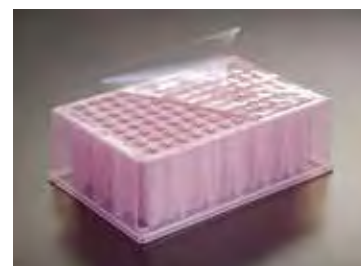
Cat. No.	Description	UOM
ES53226	8-Tube PCR Strip (0.2 mL), Flat Cap Attached	120/pack
ES53220	8-Tube PCR Strip (0.1 mL), Flat Cap Attached	120/pack
ES53252	0.2 mL PCR 8-strip tubes and flat caps	250/pack
ES53254	0.2 mL PCR 8-strip tubes and domed caps	250/pack
ES53231	Flat Caps for 8-Tube PCR Strip	250/pack
ES53233	Domed Caps for 8-Tube PCR Strip	250/pack
ES4305	Domed Caps for 12-Tube PCR Strip	125/pack
ES4304	12-Tube PCR Strip (0.2 mL)	125/pack

## Low Binding Microcentrifuge Tubes

- Low binding polypropylene microcentrifuge tubes with low adhesion surface provides optimum sample yield
- No lubricant is necessary, eliminating sample contamination
- Designed to withstand centrifugation up to 20,000g
- Packaged in a tamperproof resealable safety-lock bags
- Graduated tubes are autoclavable to 121 °C.



Cat. No.	Description	UOM
ES84634	Microcentrifuge tube, 1.5 mL, conical bottom	500/pack
ES84637	Microcentrifuge tube, 2.0 mL, self standing bottom	500/pack





## Taq DNA Polymerase and Master Mix

- Ideal for routine PCR applications as well as genotyping, colony PCR and fast PCR
- Improved template affinity and increased processivity for higher enzymatic activity and greater yields
- Buffer optimized for a variety of assay conditions

Cat. No.	Description	UOM
ES53711-500	Taq DNA Polymerase	500u (5u/μl)
ES53711-1000	Taq DNA Polymerase	1000u (5u/μl)
ES53711-6000	Taq DNA Polymerase	6000u (5u/μl)
ES53713-200	2X Taq Master Mix	200 x 50μl Reactions
ES53713-1000	2X Taq Master Mix	1000 x 50μl Reactions
ES53715-200	2X Taq Red Master Mix	200 x 50μl Reactions
ES53715-1000	2X Taq Red Master Mix	1000 x 50μl Reactions

## Taq Plus DNA Polymerase & Master Mix

- Higher fidelity for long PCR amplicons, up to 35kb
- Ideal for problematic templates
- Better sensitivity and higher activity for low copy and long PCR
- Enzyme of choice for TA cloning

Cat. No.	Description	Size
ES53751-250	Taq Plus DNA Polymerase	250u (5u/μl)
ES53751-500	Taq Plus DNA Polymerase	500u (5u/μl)
ES53753-200	2X Taq Plus Master Mix	200 x 50μl Reactions
ES53753-1000	2X Taq Plus Master Mix	1000 x 50μl Reactions

## 1 Hour Mammalian Genotyping Kit

- DNA extraction and amplification in an hour
- Proprietary lysis buffer optimized for ear punches, tail snips and other mammalian tissues
- Single tube - no organic solvents or clean up procedures
- Enhanced Hot Start Taq Polymerase Master Mix included

Cat. No.	Description	Reactions
ES53793-80	1 Hour Mammalian Genotyping Kit	80
ES53793-400	1 Hour Mammalian Genotyping Kit	400

## qMAX™ Probe qPCR Mix

- Same high efficiency for multiplex and singleplex reactions
- Compatible with popular hydrolysis and beacon probes
- Early C<sub>t</sub> values and detection across a broad dynamic range

Cat. No.	Description	Reactions (20μl volume)
ES53831-100	qMax Probe, No Rox qPCR Mix	100
ES53831-500	qMax Probe, No Rox qPCR Mix	500
ES53831-1000	qMax Probe, No Rox qPCR Mix	1000
ES53833-100	qMax Probe, Low Rox qPCR Mix	100
ES53833-500	qMax Probe, Low Rox qPCR Mix	500
ES53833-1000	qMax Probe, Low Rox qPCR Mix	1000
ES53835-100	qMax Probe, High Rox qPCR Mix	100
ES53835-500	qMax Probe, High Rox qPCR Mix	500
ES53835-1000	qMax Probe, High Rox qPCR Mix	1000

## Hot Start Taq DNA Polymerase & Master Mix

- Exceptional sensitivity for low copy PCR
- Ideal for multiplex PCR and amplification of GC-rich DNA
- Same enhanced features as Taq Polymerase
- Buffer optimized for fast cycling and reproducibility

Cat. No.	Description	UOM
ES53731-500	Hot Start Taq DNA Polymerase	500u (5u/μl)
ES53731-1000	Hot Start Taq DNA Polymerase	1000u (5u/μl)
ES53731-6000	Hot Start Taq DNA Polymerase	6000u (5u/μl)
ES53733-200	Hot Start 2X Taq Master Mix	200 x 50μl Reactions
ES53733-1000	Hot Start 2X Taq Master Mix	1000 x 50μl Reactions
ES53735-200	Hot Start 2X Taq Red Master Mix	200 x 50μl Reactions
ES53735-1000	Hot Start 2X Taq Red Master Mix	1000 x 50μl Reactions

## High Fidelity DNA Polymerase

- 50X higher fidelity than Taq DNA polymerase
- Works with crude DNA samples
- Ideal for cloning, mutagenesis and microarrays
- Optimized buffer system with unique PCR enhancers

Cat. No.	Description	Size
ES53791-200	High Fidelity DNA Polymerase	200u (2u/μl)
ES53791-1000	High Fidelity DNA Polymerase	1000u (2u/μl)

## qMAX™ cDNA Synthesis Kit

- Rapidly generate high quality, qPCR ready cDNA
- Unbiased, complete sequence representation
- Thermostable qMax RT with RNase inhibitor
- Optimized for use across a wide dynamic range
- Two tube format for easy reaction set up

Cat. No.	Description	Reactions (20μl volume)
ES53851-25	qMax cDNA Synthesis Kit	25
ES53851-100	qMax cDNA Synthesis Kit	100
ES53851-250	qMax cDNA Synthesis Kit	250

## qMAX™ Green qPCR Mix

- Superior sensitivity and fast cycling with exceptional results
- Includes Hot Start Taq Polymerase for greater specificity & accuracy
- Ideal for low copy number templates
- Early C<sub>t</sub> values and detection across a broad dynamic range

Cat. No.	Description	Reactions (20μl volume)
ES53813-100	qMax Green, Low Rox qPCR Mix	100
ES53813-500	qMax Green, Low Rox qPCR Mix	500
ES53813-1000	qMax Green, Low Rox qPCR Mix	1000
ES53815-100	qMax Green, High Rox qPCR Mix	100
ES53815-500	qMax Green, High Rox qPCR Mix	500
ES53815-1000	qMax Green, High Rox qPCR Mix	1000





## Microtube Homogenizers

Cat. No.	ES59461	ES59463	ES59461-24
Description	3-Place Microtube Homogenizer	6-Place Microtube Homogenizer	24-Place Microtube Homogenizer
Speed Range	2,800 to 4,000 rpm	4.0 to 7.0 m/s (0.05 m/s increments)	4.0 to 7.0 m/s (0.05 m/s increments)
Capacity	3 x 2.0 mL (non-skirted)	6 x 2.0ml or 2 x 5.0ml* <i>Requires 5ml adapters, sold separately</i>	24 x 0.2 mL tubes or 6 x 5 mL
Dimension	6.9"W x 8.3"D x 5.3"H	8.6"W x 14"D x 8"H	11"W x 14.2"D x 15.2"H
Weight	5 lbs	20 lbs	55 lbs
Cycle Time	-	1 to 90 sec. (up to 90 sec.)	1 to 90 sec. (up to 90 sec.)
Pauses Between Cycles	-	0 to 2 min. (1 sec. increments)	0 to 2 min. (1 sec. increments)
Max # of Cycles, Per Program:	-	10	10
Accel. / Decel. Time:	-	<2 sec. / <2 sec.	<2 sec. / <2 sec.
Program memory	-	last programmed parameters remain in memory for repeated runs	up to 50

## Prefilled Homogenizer Tubes

- Each prefilled tube kit includes 2.0 mL screw top tubes with cap, sealing rings, and beads (detailed below)
- The high impact zirconium beads are acid washed, heat treated, and ideal for molecular biology applications
- A starter kit (ES59465K) is available to accommodate a range of samples



Cat. No.	Description	UOM
ES59464-01	Standard Glass Beads, 0.1 mm diameter	50/pack
ES59464-05	Standard Glass Beads, 0.5 mm diameter	50/pack
ES59464-10	Standard Glass Beads, 1.0 mm diameter	50/pack
ES59465-01	High Impact Zirconium Beads, 0.1 mm diameter	50/pack
ES59465-05	High Impact Zirconium Beads, 0.5 mm diameter	50/pack
ES59465-10	High Impact Zirconium Beads, 1.0 mm diameter	50/pack
ES59465-15	High Impact Zirconium Beads, 1.5 mm diameter	50/pack
ES59465-30	High Impact Zirconium Beads, 3.0 mm diameter	50/pack
ES59465K	Starter Kit, high impact zirconium beads, 0.1-3.0 mm	10/case
ES59466-28	Stainless Steel Beads, 2.8 mm diameter	50/pack
ES59469-2T	Empty Tubes, 2.0 mL	1000/pack

	Bead Material	Silica			Zirconium					Steel
		0.1mm	0.5mm	1.0mm	0.1mm	0.5mm	1.0mm	1.5mm	3.0mm	
Animal	Adipose							X		
	Artery							X	X	
	Bone									X
	Brain							X	X	
	Insect - Fly								X	X
	Insect - Tick								X	X
	Insect - Mosquito						X	X	X	
	Gonad							X	X	
	Hair								X	X
	Heart							X	X	
	Kidney							X		
	Liver							X	X	
	Lung							X	X	
	Muscle								X	X
	Pancreas							X	X	
	Skin								X	
	Spleen							X	X	
	Teeth								X	X
Microbial	Algae		X			X				
	Bacteria	X	X		X	X				
	Fungi		X	X		X	X			
	Mold		X			X				
	Spores		X	X		X	X			
	Yeast		X	X		X	X			
Plant & Soil	Leaves								X	X
	Nuts									X
	Plant, soft tissue								X	X
	Plant, tough tissue								X	X
	Seeds								X	X
	Stems								X	X
	Soil							X		
	Coral									X
Fecal	Stool							X		
	Scat								X	X



## Thermal Cyclers

- Intuitive touch screen control
- Retains the advanced programming features, easy to use software and fast, reliable cycling

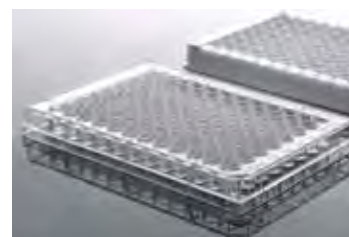


Cat. No.	ES59720	ES59721	ES59723
Description	Mini Thermal Cycler with multifORMAT block	Thermal Cycler with multifORMAT block	Thermal Cycler with 384 well block
Capacity	0.2 mL tubes: 32 8 x 0.2 mL PCR tubes: 4	0.2 mL tubes/strip tubes: 96 0.5 mL tubes: 39 Nonskirted 96 well plate: 1	384 well plate: 1
Temp Control Range:	0° to 99°C	0°-100°C	0°-100°C
Temp Control:	Simulated sample or block	Simulated sample or block	Simulated sample or block
Accuracy/Uniformity:	± 0.25°C/ ±0.25°C	±0.2°C/±0.2°C	±0.2°C/±0.2°C
Ramp Rate:	5°C/second (maximum)	5°C/second (maximum)	5°C/second (maximum)
Lid Temp:	30°C to 112°C, user adjustable	30°C to 112°C, user adjustable	30°C to 112°C, user adjustable
Program Memory:	Over 100 typical programs	Unlimited with flash drive	Unlimited with flash drive
Increments/Decrements:	Yes, both time and temperature	Yes, both time and temperature	Yes, both time and temperature
Power Failure Restart:	Yes	Yes	Yes
Dimensions	7.2"W x 9.2"D x 6.2"H	10.2 x 14.2 x 9.9 in.	10.2 x 14.2 x 9.9 in.
Weight	6.4 lbs	16 lbs	16 lbs

## ELISA Plates | Detachable & Undetachable Strips

- Made of clear PS material
- Designed for ELISA method
- Conforms to SBS/ ANSI
- Flat and transparent bottom
- Excellent well uniformity, CV <5%

Cat. No.	Description	UOM
ES58413	ELISA Plate, high binding, clear	5/pack, 50/case
ES58415	ELISA Plate w/ Detachable strips (1x8 strips), high binding, clear	5/pack, 50/case



See more of our small benchtop equipment starting on page 61.





## Incubating Cooling Thermal Shakers

The thermal shakers are designed for cell cultures, DNA, RNA, protein studies and other applications that require consistent and precise results with heating, cooling and shaking capabilities. These shakers use interchangeable blocks to accommodate a wide variety of tubes and microplates. The easy-to-use color touch screen allows the user to save and visibly track progress through the live status bar for five user defined programs, each with five individual steps.

**Temp. Range:** ES59562: 4°C above ambient to 100°C  
ES59562-HC: 17°C below ambient to 100°C

**Temp. Accuracy:** ES59562:  $\pm 1^\circ\text{C}$  between 20°C and 45°C  
 $\pm 2^\circ\text{C}$  above 45°C  
ES59562-HC:  $\pm 0.5^\circ\text{C}$  between 20°C and 45°C  
 $\pm 2^\circ\text{C}$  below 20°C and above 45°C

**Speed Range:** 300 to 3000 rpm

**Speed Accuracy:**  $\pm 2\%$

**Timer:** 1 minute to 99 hours, 59 minutes

**Orbit:** 3 mm

**Cooling Rate:** above ambient 2-3°C/min  
below ambient 0.5-1.0°C/min

**Heating Rate:** 5°C/min



Cat. No.	Description	UOM
ES59562	Thermal Shaker, heating	Each
ES59562-HC	Thermal Shaker, heating and cooling	Each

## Microplate Absorbance Reader

The Microplate Absorbance Reader is a convenient stand alone reader, all software and the programming system is incorporated into the electronics. A convenient USB port on the side allows quick and easy saving of data files to a USB drive, and the universal .csv files can be then shared or transferred to a computer for storage or further processing.

**Control/Display:** 7 inch touch screen

**Light Source:** Quartz-halogen lamp

**Wavelength range:** 340-750nm

**Half-Bandwidth of filter:** 3~9nm

**Readout Range:** 0~4.00 Abs

**Linearity (405nm):** 0~2.00 Abs  $< +1\%$   
0~4.000 Abs  $< +2\%$

**Precision:** CV  $\leq 0.2\%$  (0-3) Abs

CV  $\leq 1.0\%$  (3-4) Abs

**Test Speed:**  $< 6$  sec. for 96 well plate

**Shaking:** 3 modes: slow, medium, fast

**User interface:** Integrated software, touch screen control

**Storage:** 200 programs, 100,000 test records

**Ports:** USB ports for PC, printer, mouse and flase drive



Cat. No.	Description	UOM
ES59850	Microplate Absorbance Reader	Each



For your liquid handling needs, turn to page 49 to see our entire collection of Pipettes, Filter Pipette Tips, Single Channel Pipettors and Multi Channel Pipettors!





## Urine Specimen Containers

All of our urine specimen containers are designed for safe and leak-resistant transportation. We offer a variety of sizes, colors (caps), and packaging to meet the needs of your facility. Containers with temperature strips are also available.

- Made of 100% virgin medical grade polypropylene
- Feature graduation marks
- 95 kPa compliant
- Available sterile and non-sterile
- Sterile containers feature a sterile tab label, and non-sterile containers features a standard label or no label

### DuoClick™ Specimen Containers

Azer Scientific's DuoClick™ closures ensure safe transportation of specimen. Once the specimen is collected, a simple turn of the closure will give the user assurance that the seal is fully engaged with a "click" sound. The second "click" ensures 95 kPa compliance for pneumatic tube transportation.

### 60 mL x 48 mm DuoClick™ Containers

Sterile Cat. No.	Non-Sterile Cat. No.	Description	UOM
ES245030	ES145030	60 mL x 48 mm DuoClick™ Container, natural cap, tab label	500/case
ES245230	ES145230	60 mL x 48 mm DuoClick™ Container, white cap, tab label	500/case
ES245430	ES145430	60 mL x 48 mm DuoClick™ Container, green cap, tab label	500/case
ES245530	ES145530	60 mL x 48 mm DuoClick™ Container, blue cap, tab label	500/case
ES245630	ES145630	60 mL x 48 mm DuoClick™ Container, yellow cap, tab label	500/case
ES245930	ES145930	60 mL x 48 mm DuoClick™ Container, orange cap, tab label	500/case
-	ES145032	60 mL x 48 mm DuoClick™ Container, natural cap, no label	500/case
-	ES145233	60 mL x 48 mm DuoClick™ Container, white cap, no label	500/case



### 60 mL x 48 mm DuoClick™ Containers with Temperature Strips

Sterile Cat. No.	Non-Sterile Cat. No.	Description	UOM
-	ES145234	60 mL x 48 mm DuoClick™ Container, temperature strip, white cap, label	500/case
ES245232	-	60 mL x 48 mm DuoClick™ Container, temperature strip, white cap, tab label	500/case

### 90 mL x 48 mm DuoClick™ Containers

Sterile Cat. No.	Non-Sterile Cat. No.	Description	UOM
ES244020	ES144020	90 mL x 48 mm DuoClick™ Container, natural cap, tab label	400/case
ES244220	ES144220	90 mL x 48 mm DuoClick™ Container, white cap, tab label	400/case
ES244420	ES144420	90 mL x 48 mm DuoClick™ Container, green cap, tab label	400/case
ES244520	ES144520	90 mL x 48 mm DuoClick™ Container, blue cap, tab label	400/case
ES244620	ES144620	90 mL x 48 mm DuoClick™ Container, yellow cap, tab label	400/case
ES244820	-	90 mL x 48 mm DuoClick™ Container, teal cap, tab label	400/case
ES244920	ES144920	90 mL x 48 mm DuoClick™ Container, orange cap, tab label	400/case
-	ES144621	90 mL x 48 mm DuoClick™ Container, yellow cap, no label	400/case
-	ES144022	90 mL x 48 mm DuoClick™ Container, natural cap, no label	400/case



### 90 mL x 48 mm DuoClick™ Containers with Temperature Strips

Non-Sterile Cat. No.	Description	UOM
ES144222	90 mL x 48 mm DuoClick™ Container, temperature strip, white cap, label	400/case
ES144622	90 mL x 48 mm DuoClick™ Container, temperature strip, yellow cap, label	400/case





## 90 mL x 53 mm DuoClick™ Containers

Sterile Cat. No.	Non-Sterile Cat. No.	Description	UOM
ES243020	ES143020	90 mL x 53 mm DuoClick™ Container, natural cap, tab label	400/case
ES243220	ES143220	90 mL x 53 mm DuoClick™ Container, white cap, tab label	400/case
ES243420	ES143420	90 mL x 53 mm DuoClick™ Container, green cap, tab label	400/case
ES243520	ES143520	90 mL x 53 mm DuoClick™ Container, blue cap, tab label	400/case
ES243620	ES143620	90 mL x 53 mm DuoClick™ Container, yellow cap, tab label	400/case
ES243820	-	90 mL x 53 mm DuoClick™ Container, teal cap, tab label	400/case
ES243920	ES143920	90 mL x 53 mm DuoClick™ Container, orange cap, tab label	400/case
-	ES143222	90 mL x 53 mm DuoClick™ Container, white cap, no label	400/case



## 90 mL x 53 mm DuoClick™ Containers with Temperature Strips

Sterile Cat. No.	Description	UOM
ES243523	90 mL x 53 mm DuoClick™ Container, temperature strip, blue cap, label	400/case
ES243922	90 mL x 53 mm DuoClick™ Container, temperature strip, orange cap, tab label	400/case
ES243625	90 mL x 53 mm DuoClick™ Container, temperature strip, yellow cap, tab label	400/case
ES243425	90 mL x 53 mm DuoClick™ Container, temperature strip, green cap, tab label	400/case

## 120 mL x 53 mm DuoClick™ Containers

Sterile Cat. No.	Non-Sterile Cat. No.	Description	UOM
ES242020	ES142020	120 mL x 53 mm DuoClick™ Container, natural cap, tab label	300/case
ES242220	ES142220	120 mL x 53 mm DuoClick™ Container, white cap, tab label	300/case
ES242420	ES142420	120 mL x 53 mm DuoClick™ Container, green cap, tab label	300/case
ES242520	ES142520	120 mL x 53 mm DuoClick™ Container, blue cap, tab label	300/case
ES242620	ES142620	120 mL x 53 mm DuoClick™ Container, yellow cap, tab label	300/case
ES242820	-	120 mL x 53 mm DuoClick™ Container, teal cap, tab label	300/case
ES242920	ES142920	120 mL x 53 mm DuoClick™ Container, orange cap, tab label	300/case
-	ES142621	120 mL x 53 mm DuoClick™ Container, yellow cap, no label	300/case
-	ES142222	120 mL x 53 mm DuoClick™ Container, white cap, no label	300/case



## 120 mL x 53 mm DuoClick™ Containers with Temperature Strips

Sterile Cat. No.	Description	UOM
ES242421	120 mL x 53 mm DuoClick™ Container, temperature strip, green cap, tab label	300/case
ES242226	120 mL x 53 mm DuoClick™ Container, temperature strip, white cap, tab label	300/case

## DuoClick™ Containers with Boric Acid Tablets

Cat. No.	Description	UOM
ES145233	60 mL x 48 mm DuoClick™ Container with 50 mg Boric Acid Tablet, white cap, no label, non-sterile	500/case
ES145238	60 mL x 48 mm DuoClick™ Container with 100 mg Boric Acid Tablet, white cap, tab label, non-sterile	500/case
ES244927	90 mL x 48 mm DuoClick™ Container with 200 mg Boric Acid Tablet, orange cap, tab label, sterile	400/case
ES243927	90 mL x 53 mm DuoClick™ Container with 200 mg Boric Acid Tablet, orange cap, tab label, sterile	400/case



## Individually Wrapped DuoClick™ Containers

Cat. No.	Description	UOM
ES244021	90 mL x 48 mm DuoClick™ Container, natural cap, tab label, individually wrapped, sterile	100/case
ES243021	90 mL x 53 mm DuoClick™ Container, natural cap, tab label, individually wrapped, sterile	100/case
ES243221	90 mL x 53 mm DuoClick™ Container, white cap, tab label, individually wrapped, sterile	100/case
ES242022	120 mL x 53 mm DuoClick™ Container, white cap, tab label, individually wrapped, sterile	100/case
ES242225	120 mL x 53 mm DuoClick™ Container, white cap, tab label, individually wrapped, sterile	250/case
ES242527	120 mL x 53 mm DuoClick™ Container, blue cap, tab label, individually wrapped, sterile	100/case



## Azer Clean Catch Urine Kit

Kit includes a sterile 90 mL x 53 mm urine collection cup, Azer Grip handle, instructions (in English & Spanish), and two castile soap towlettes for patient cleansing before and after collection.

- The **Azer Grip handle** is the ideal addition to any random urine collection procedure
- Provides added cleanliness and ease to the patient
- Extended grip keep specimen safe from contamination



Cat. No.	Description	UOM
ES63321	Azer Clean Catch Urine Kit	50/case
ES64310	Azer Grip Handle	500/case

## Urinalysis Slide with Counting Chambers

- Precalibrated circles in the viewing chambers to aid in accurate counting of cellular elements in urine sediment
- Ten chambers, each holding up to 6.3  $\mu$ L
- Each chamber features 18 pre-measured circles with specific volumes of urine sediment
- Capillary action uniformly distributes sediment into the viewing chamber
- Each chamber has overflow wells to prevent cross contamination of samples
- Labeling areas located on the left and right side of slide for sample identification



Cat. No.	Description	UOM
ES64930	Urinalysis Slide with Counting Chambers	100/box

## hCG Pregnancy Urine Test



Cat. No.	Description	UOM
ESP595A	hCG Pregnancy Urine Dipstick	50/pack
ESP596-50	hCG Pregnancy Urine Card Test	50/pack

## Urine Sediment Stain

This Sternheimer Malbin Stain is a commonly used supravital stain containing crystal violet and safranin. Stains blood cells, casts, and other formed elements in urinary sediment to aid in rapid and accurate identification. Available in a 15 mL and 60 mL dropper bottle.

Cat. No.	Description	UOM
ES940	Urine Sediment Stain, 15 mL	Each
ES939	Urine Sediment Stain, 60 mL	Each

## Urine Sediment Tubes

Uniquely designed with straight sides to eliminate interference within a tube rack or centrifuge insert. Compatible with the Sysmex™ and Siemens™ Atlas™ instruments.

- 12 mL capacity
- Graduations to 10 mL
- Maximum RCF of 15000 x g
- 400  $\mu$ L sediment trap capacity
- Plug seal push caps for safe handling and storage (sold separately)



Cat. No.	Description	UOM
ES3010	Urine Sediment Tube	1000/case
ES3011	Universal Push Cap	1000/case

## Biohazard Bags

- 3 wall reclosable biohazard transport bags
- Feature separate sections for specimen and for paperwork



Cat. No.	Description	UOM
ESB6X9	Biohazard bag, 6" x 9"	1000/case
ESB6X9-AP	Biohazard bag, 6" x 9" with 3" x 5" absorbent pad	1000/case
ESB6X9-G	Biohazard bag, 6" x 9", green	1000/case
ESB8X10	Biohazard bag, 8" x 10"	1000/case
ESB12X15	Biohazard bag, 12" x 15"	1000/case
ESB12X15-G	Biohazard bag, 12" x 15", green	1000/case

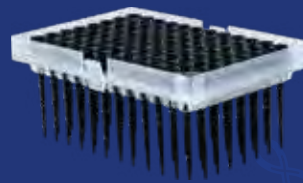


# General Laboratory Supplies



Plain, frosted, charged, Hematology analyzer microscope slides and much more for various applications!

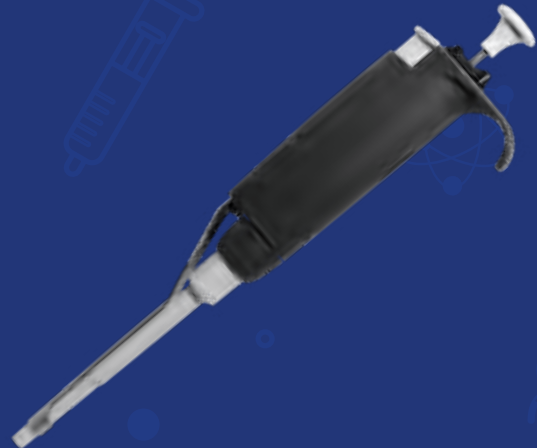
Conductive and non-conductive robotic tips compatible with popular automation liquid handling systems.



EcoTek

Biodegradable gloves that degrade in landfills in less than 3 years!

xPIPETTE™ is an ergonomic pipettor compatible with xTIP4™ and Rainin tips™!





## Plain & Frosted Microscope Slides

- Smooth with burr-free, wet-ground edges
- All grinding and polishing is carried out water-cooled
- **Packaging:** 72 slides/box, 20 boxes/case

Cat. No.	Description	Dimensions	UOM
23110	Plain Slide	3" x 1" x 1 mm	1440/case
23112	Frosted Slide, double end	3" x 1" x 1 mm	1440/case
2752510	Plain Slide	75 x 25 x 1 mm	1440/case
27525103	Plain Slide, rounded corners	75 x 25 x 1 mm	1440/case
2752511	Frosted Slide, single frosted end	75 x 25 x 1 mm	1440/case
27525113	Frosted Slide, single frosted end, rounded corners	75 x 25 x 1 mm	1440/case
2752512	Frosted Slide, double frosted end	75 x 25 x 1 mm	1440/case



## Unifrost® Microscope Slides

- Pre-cleaned with smooth, ground edges and undergo continuous quality processing
- Made from high-quality, white German glass
- All slides feature a single side, color frosted end to help reduce the amount of sticking and jamming problems that can occur in automated systems
- The frosted ends are resistant to all common chemicals used in the laboratory
- Clipped corner slides available for use in popular slide printers
- Adhesive slides are available, prepared with a permanent adhesive which firmly anchors all types of specimen to the slide
- **Packaging:** 72 slides/box, 20 boxes/case



Color	Standard	Clipped Corner	Standard (+)	Clipped Corner (+)	Thermal	Thermal (+)	Clipped Corner Thermal	Clipped Corner Thermal (+)	UOM
Aqua	EMS200A	EMSC200A	EMS200A+	EMSC200A+	EMS200A-TH	EMS200A-TH+	-	-	1440/case
Blue	EMS200B	EMSC200B	EMS200B+	EMSC200B+	EMS200B-TH	EMS200B-TH+	-	-	1440/case
Green	EMS200G	EMSC200G	EMS200G+	EMSC200G+	EMS200G-TH	EMS200G-TH+	-	-	1440/case
Gray	EMS200GY	EMSC200GY	EMS200GY+	EMSC200GY+	-	-	-	-	1440/case
Lilac	EMS200L	EMSC200L	EMS200L+	EMSC200L+	-	-	-	-	1440/case
Orange	EMS200OR	EMSC200OR	EMS200OR+	EMSC200OR+	-	-	-	-	1440/case
Pink	EMS200P	EMSC200P	EMS200P+	EMSC200P+	EMS200P-TH	EMS200P-TH+	-	-	1440/case
White	EMS200W	EMSC200W	EMS200W+	EMSC200W+	EMS200W-TH	EMS200W-TH+	EMS200W-TH	EMSC200W-TH+	1440/case
Yellow	EMS200Y	EMSC200Y	EMS200Y+	EMSC200Y+	EMS200Y-TH	EMS200Y-TH+	-	-	1440/case

## Azerbond™ Slides for IHC

- Designed for the toughest, most difficult histology tissues
- Developed for use where standard adhesive coatings may fail
- Stands up to the toughest IHC procedures and provides excellent staining results
- Ideal for fluorescent microscopy

Cat. No.	Description	UOM
EMS600W+	Azerbond™ Slide, white	1440/case

## Azer-Ink Chemically Resistant Markers

- Ultra-fine tip leaves a permanent mark on slides and cassettes
- Designed specifically for histology use
- Smear-proof, waterproof, and odorless
- Resistant to chemicals such as xylene and alcohol



Cat. No.	Description	UOM
ES-001	Azer-Ink, chemically resistant markers	12/box





## Histobond™ Slides

- Emit the lowest fluorescence
- Ultra thin, color-coated ends are ideal for automated systems
- Prepared with a permanent positive charge which firmly anchors all types of sections to the slide
- Dimensions: 75 mm x 25 mm x 1 mm
- Packaging: 72 slides/box, 20 boxes/case



Cat. No.	Description	UOM
UNIA75251+	Histobond™ Slide, aqua	1440/case
UNIB75251+	Histobond™ Slide, blue	1440/case
UNIG75251+	Histobond™ Slide, green	1440/case
UNIL75251+	Histobond™ Slide, lilac	1440/case
UNIP75251+	Histobond™ Slide, pink	1440/case
UNIW75251+	Histobond™ Slide, white	1440/case
UNIY75251+	Histobond™ Slide, yellow	1440/case

## Depression Slides

- Carefully ground and polished, resulting in grooveless, immaculate surfaces
- Made of soda lime glass of 3. hydrolytic class with 90° ground edges
- Slides measure 76 x 26 mm with 1.2 to 1.5 mm thickness
- Cavities measure 15 to 18 mm diameter with 0.6 to 0.8 mm depth



Cat. No.	Description	UOM
ES1320002	Depression Slide, 1 cavity	50/box, 100/case
ES1320102	Depression Slide, 2 cavities	50/box, 100/case
ES1320202	Depression Slide, 3 cavities	50/box, 100/case

## Sterile Slides

- Ideal for use in hospital surgical settings, oral surgery offices, and veterinary medicine
- Features a frosted end
- Measures 75 x 25 x 1 mm
- Each slide is individually packaged in a pouch
- Can be used in aseptic environments



Cat. No.	Description	UOM
23111-S	Frosted Slide, sterile	50/pack

## Diagnostic Slides

We offer a wide selection of diagnostic slides. Simply go through the options below and we will provide you with the best match to meet your needs. Contact us to learn more.

1

Number  
of Wells

2

Size & Shape  
of Wells

3

Pattern  
of Wells

4

With or Without  
Frosted End

5

Color of  
Coating

6

Printed  
Markings





## Hemocytometers (Counting Chambers)

For investigations of cell suspensions, equipped with two sets of grids, for duplicate determinations that are often required during in-vitro diagnostic applications. The counting grids are engraved into two ground and polished surfaces on the central ridge (chamber bottom). This central ridge is located between two elevated, also ground and polished, ridges.

Each counting chamber includes two of the corresponding cover glass. Cover glass replacements can also be purchased separately.



### Dark-Lined

Standard hemocytometers have counting grids which are engraved into the chamber bottom. Under the microscope, the counting grid appears as a grid of dark lines.

Cat. No.	Description	Corresponding Cover Glass	UOM
ES2010	Counting Chamber, Neubauer-improved, dark-lined	ES2026	Each
ES2011	Counting Chamber, Fuchs-Rosenthal, dark-lined	ES2026	Each
ES2012	Counting Chamber, Nageotte, dark-lined	ES2028	Each

### Bright-Lined

These hemocytometers have counting grids which are engraved into an annealed metal coating. Under normal microscope settings, the counting grid appears as a grid of bright lines. By altering the contrast, the counting grid can also be made to appear dark.

Cat. No.	Description	Corresponding Cover Glass	UOM
ES2013	Counting Chamber, Neubauer-improved, bright-lined	ES2026	Each
ES2014	Counting Chamber, Fuchs-Rosenthal, bright-lined	ES2026	Each
ES2015	Counting Chamber, Nageotte, bright-lined	ES2028	Each

### V-Slashes

V-slashes are the openings at the top and at the bottom of each plateau of the counting chamber. The V-slash facilitates filling the liquid and loading of the chamber.

Cat. No.	Description	Corresponding Cover Glass	UOM
ES2018	Counting Chamber, Neubauer-improved, V-slash and dark-lined	ES2026	Each
ES2019	Counting Chamber, Neubauer-improved, V-slash and bright-lined	ES2026	Each

### Hemocytometer Cover Glass

Replacement cover glass for hemocytometers. Please reference ordering charts above to determine compatibility.

Cat. No.	Description	UOM
ES2026	20 x 26 x 0.4 mm, for hemocytometer	100/case
ES2028*	30 x 30 x 0.4 mm, for hemocytometer	100/case







## Cover Glass

- Made of pure white borosilicate glass of the finest hydrolytic class
- Excellent chemical resistance and flatness
- Does not emit any disturbing fluorescence under the ultraviolet light of the fluorescence microscopy
- Appropriate for use in cover slippers

### Rectangular

Cat. No.	Description	UOM
112230*	No. 1, 22 x 30 mm	1 oz./pack, 10 packs/case
112240*	No. 1, 22 x 40 mm	1 oz./pack, 10 packs/case
112250*	No. 1, 22 x 50 mm	1 oz./pack, 10 packs/case
112260*	No. 1, 22 x 60 mm	1 oz./pack, 10 packs/case
112430	No. 1, 24 x 30 mm	1 oz./pack, 10 packs/case
112440	No. 1, 24 x 40 mm	1 oz./pack, 10 packs/case
112450	No. 1, 24 x 50 mm	1 oz./pack, 10 packs/case
112450-20	No. 1, 24 x 50 mm	2 oz./pack, 10 packs/case
112455	No. 1, 24 x 55 mm	1 oz./pack, 10 packs/case
112460	No. 1, 24 x 60 mm	1 oz./pack, 10 packs/case
1152230*	No. 1.5, 22 x 30 mm	1 oz./pack, 10 packs/case
1152240*	No. 1.5, 22 x 40 mm	1 oz./pack, 10 packs/case
1152250*	No. 1.5, 22 x 50 mm	1 oz./pack, 10 packs/case
1152260*	No. 1.5, 22 x 60 mm	1 oz./pack, 10 packs/case
1152430*	No. 1.5, 24 x 30 mm	1 oz./pack, 10 packs/case
1152440*	No. 1.5, 24 x 40 mm	1 oz./pack, 10 packs/case
1152450	No. 1.5, 24 x 50 mm	1 oz./pack, 10 packs/case
1152460*	No. 1.5, 24 x 60 mm	1 oz./pack, 10 packs/case
122450*	No. 2, 24 x 50 mm	1 oz./pack, 10 packs/case
122460*	No. 2, 24 x 60 mm	1 oz./pack, 10 packs/case

### Square

Cat. No.	Description	UOM
111818	No. 1, square, 18 mm	1 oz./pack, 10 packs/case
112222	No. 1, square, 22 mm	1 oz./pack, 10 packs/case
112525*	No. 1, square, 25 mm	1 oz./pack, 10 packs/case
1151818*	No. 1.5, square, 18 mm	1 oz./pack, 10 packs/case
1152222*	No. 1.5, square, 22 mm	1 oz./pack, 10 packs/case
121818*	No. 2, square, 18 mm	1 oz./pack, 10 packs/case
122222*	No. 2, square, 22 mm	1 oz./pack, 10 packs/case
122525*	No. 2, square, 25 mm	1 oz./pack, 10 packs/case

### Round

Cat. No.	Description	UOM
200101*	No. 1, round, 10 mm	100/pack, 10 packs/case
200121	No. 1, round, 12 mm	1 oz./pack, 10 packs/case
200141*	No. 1, round, 14 mm	100/pack, 10 packs/case
200151*	No. 1, round, 15 mm	100/pack, 10 packs/case
200161*	No. 1, round, 16 mm	1 oz./pack, 10 packs/case
200181*	No. 1, round, 18 mm	100/pack, 10 packs/case
200201*	No. 1, round, 20 mm	1 oz./pack, 10 packs/case
200221*	No. 1, round, 22 mm	100/pack, 10 packs/case
200241*	No. 1, round, 24 mm	1 oz./pack, 10 packs/case
200251*	No. 1, round, 25 mm	100/pack, 10 packs/case
200182*	No. 2, round, 18 mm	50/pack, 10 packs/case
200222*	No. 2, round, 22 mm	50/pack, 10 packs/case
200252*	No. 2, round, 25 mm	50/pack, 10 packs/case



\*Special order, minimum quantities may apply.  
Please contact us to learn more.



## Glass Staining Dishes

Our glass staining dishes are ideal for manual staining. Available in 20, 30, and 60 place configurations. Racks sold separately.



Cat. No.	Description	UOM
ES36970	Glass Stain Dish, 20 place	Each
ES36971	Glass Stain Dish, 30 place	Each
ES36973	Rack for 20 Place Dish	Each
ES36974	Rack for 30 Place Dish	Each

## Glass Coplin Jar

Each coplin jar encompasses wide, flat, and round bases. Able to hold up to 10 slides, back-to-back.

Dimensions: 3" high, 1.2" internal diameter



Cat. No.	Description	UOM
ES3086	Glass Coplin Jar	Each

## Plastic Coplin Jar

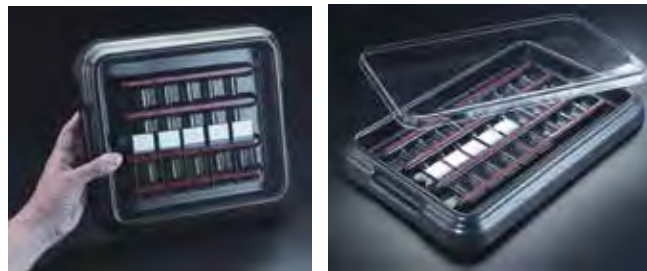
This sturdy coplin jar is made of polypropylene and designed to hold up to 10 microscope slides. The inside of the jar is grooved to support and protect slides placed back-to-back.

Cat. No.	Description	UOM
ES050	Plastic Coplin Jar	12/case

## Slide Staining Trays

Suitable for routine staining requiring a humid chamber. Also ideal for hematology, cytology, and microbiology labs.

- When humidity is needed, wells between rails will hold water securely without splashing
- Rubber feet ensure greater stability
- Base is made of sturdy ABS plastic, which can withstand most chemicals
- Raised rails for easy slide retrieval
- Base holds excess stain solution from dripping of slides
- Slide staining trays are stackable to save space



Description	10 Place	20 Place	UOM
Base with Clear Lid	ES3071	ES3075	Each
Base with Black Lid	ES3072	ES3076	Each
Clear Lid	ES3073	ES3077	Each
Black Lid	ES3074	ES3078	Each

## Slide Staining Jars

- Slide holder holds 12 slides and features a handle for safe and easy dipping of samples
- Each staining jar has a stable base allowing for less reagent use (about 80 mL)
- Slide staining kit includes 5 jars (one of each color), and 1 slide holder. Additional kit available with metal work station rack, which is also available separately.



Cat. No.	Description	UOM
ES4400AS	Slide Staining Kit, 5 jars and 1 slide holder	Each
ES4400KT	Slide Staining Jars Kit, 6 jars (1 of each and 2 white), 1 slide holder, 1 metal work station rack	Each
ES4400B	Slide Staining Jar, blue	6/case
ES4400G	Slide Staining Jar, green	6/case
ES4400P	Slide Staining Jar, pink	6/case
ES4400Y	Slide Staining Jar, yellow	6/case
ES4400W	Slide Staining Jar, white	6/case
ES4401	Slide holder	6/case
ES4400RK	Metal work station rack	Each





## Slide Storage Boxes

- Made of sturdy ABS plastic
- Exclusive self-locking lid
- Features a cork lined bottom
- Index paper in lid corresponds with numbers on bottom of box
- Designed for stacking



Cat. No.	Description	UOM
ES3249	25 Capacity Slide Storage Box, white	20/box, 200/case
ES3250	25 Capacity Slide Storage Box, blue	20/box, 200/case
ES3251	25 Capacity Slide Storage Box, green	20/box, 200/case
ES3252	25 Capacity Slide Storage Box, red	20/box, 200/case
ES3253	25 Capacity Slide Storage Box, yellow	20/box, 200/case
ES3254	50 Capacity Slide Storage Box, white	100/case
ES3255	50 Capacity Slide Storage Box, blue	100/case
ES3256	50 Capacity Slide Storage Box, green	100/case
ES3257	50 Capacity Slide Storage Box, red	100/case
ES3258	50 Capacity Slide Storage Box, yellow	100/case
ES3259	100 Capacity Slide Storage Box, white	50/case
ES3260	100 Capacity Slide Storage Box, blue	50/case
ES3261	100 Capacity Slide Storage Box, green	50/case
ES3262	100 Capacity Slide Storage Box, red	50/case
ES3263	100 Capacity Slide Storage Box, yellow	50/case

## Slide Mailers

Plastic slide mailers are economical and reusable. Each features a sturdy, resealable clasp to ensure a secure closure. Cardboard slide mailers feature a thumb groove for easy slide removal, and cut corners to identify the top of mailer.



Cat. No.	Description	UOM
ES3267	Single Mailer, plastic	2000/case
ES3268	Double Mailer, plastic	1000/case
ES3269	Five Place Mailer, plastic	800/case
ES3264	Single Mailer, cardboard	2000/case
ES3265	Double Mailer, cardboard	1000/case
ES3266	Four Place Mailer, cardboard	200/case

## Cardboard Slide Folders

- Hold up to 20 standard microscope slides
- Each slide location is numbered
- Colored bindings allow for easy organization



Cat. No.	Description	UOM
ES020	20-Place Cardboard Slide Folder, black binding	72/case
ES020-B	20-Place Cardboard Slide Folder, blue binding	72/case
ES020-G	20-Place Cardboard Slide Folder, green binding	72/case
ES020-R	20-Place Cardboard Slide Folder, red binding	72/case
ES020-Y	20-Place Cardboard Slide Folder, yellow binding	72/case

## Plastic Slide Folders

- Hold up to 20 standard microscope slides
- Base holds slides horizontally
- Transparent door tucks under
- Numbered slide locations



Cat. No.	Description	UOM
ES3061	Plastic Slide Folder, Blue	10/case
ES3062	Plastic Slide Folder, Green	10/case
ES3063	Plastic Slide Folder, Gray	10/case
ES3064	Plastic Slide Folder, White	10/case
ES3065	Plastic Slide Folder, Yellow	10/case
ES3066	Plastic Slide Folder, Assorted	10/case

## Azer Metal Slide Cabinet

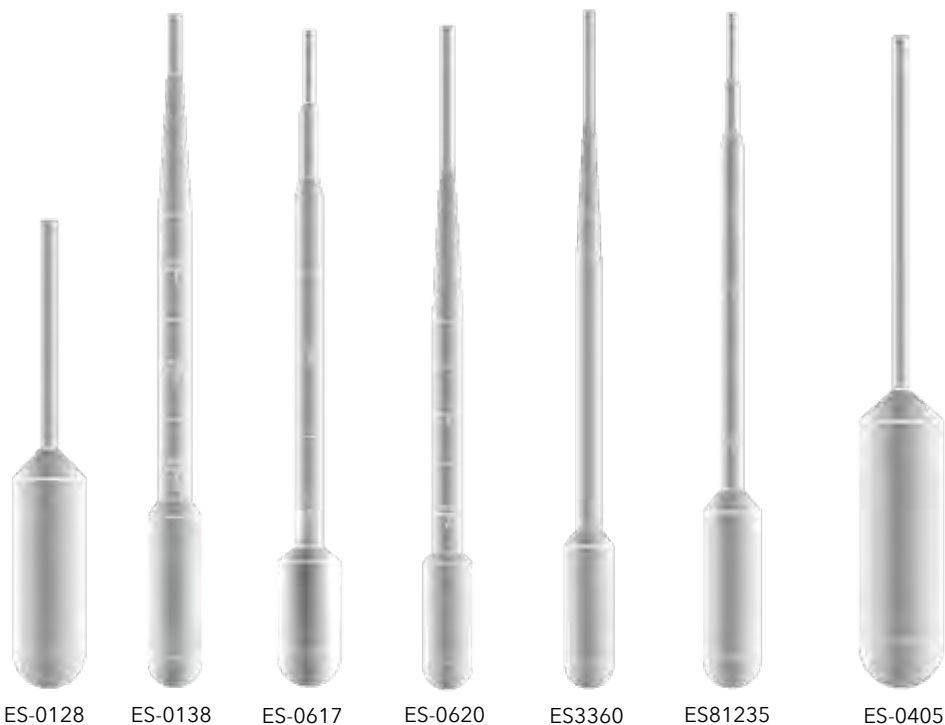
- Each slide cabinet features 6 drawers
- 4,500 standard slide capacity
- Cabinet measures 15.75" x 18.75" x 4.75"
- Our slide cabinet system includes 12 cabinets and one base
- Slide cabinet system holds up to 54,000 slides

Cat. No.	Description	UOM
ES3925G	Metal Slide Cabinet, 6 drawer, green	Each
ES3927G	Metal Slide Cabinet Base, green	Each
ES3926G	Metal Slide Cabinet System, 12 cabinets and 1 base, green	Each
ES3925T	Metal Slide Cabinet, 6 drawer, tan	Each
ES3927T	Metal Slide Cabinet Base, tan	Each
ES3926T	Metal Slide Cabinet System, 12 cabinets and 1 base, tan	Each



## Transfer Pipets

- General purpose polyethylene transfer pipets
- Delivering drop sizes from fine tip 0.17  $\mu\text{L}$  to 50  $\mu\text{L}$
- Graduated and non-graduated
- Non-sterile
- Can be used in liquid nitrogen environment



Cat. No.	Description	UOM
ES-0128	Transfer Pipet, 4.0mL, non-graduated, 86mm	500/Box, 10 Boxes/case
ES-0138	Transfer Pipet, 7.0mL, large bulb, graduated, 155mm	500/Box, 10 Boxes/case
ES-0604	Transfer Pipet, 5.8mL, fine tip, non-graduated, 147mm	500/Box, 10 Boxes/case
ES-0617	Transfer Pipet, 3.0mL, small bulb, graduated, 140mm	500/Box, 10 Boxes/case
ES-0620	Transfer Pipet, 5.0mL, blood bank, graduated, 156mm	500/Box, 10 Boxes/case
ES3360	Transfer Pipet, 5.0mL, blood bank, non-graduated, 155mm	500/Box, 10 Boxes/case
ES81235	Transfer pipet, 5.0mL, large bulb, graduated, 155mm	500/ Box, 10 Boxes/Case
ES81258	Transfer Pipet, 8.5mL, non-graduated, 137mm	250/Box, 10 Boxes/Case
ES-0405	Transfer Pipet, 15.0mL, large bulb, non-graduated, 155mm	250/Box, 10 Boxes/case

Please go to **page 3** for our selection of 4 mL and 5 mL **Blood Bank Transfer Pipets**.





## Fine Tip Pipets

Cat. No.	Description	UOM
ES-0121	1.3 mL Transfer Pipet, fine tip, 51 mm length, non-graduated, non-sterile	500/box, 8 boxes/case
ES-0602	1.5 mL Transfer Pipet, fine tip, 104 mm length, non-graduated, non-sterile	400/box, 8 boxes/case
ES-0603	5 mL Transfer Pipet, fine tip, large bulb, 153 mm length, non-graduated, non-sterile	250/box, 8 boxes/case
ES-0604	5.8 mL Transfer Pipet, fine tip, 147 mm length, non-graduated, non-sterile	500/box, 10 boxes/case
ES-0605	5.8 mL Transfer Pipet, fine tip, 147 mm length, non-graduated, sterile	20/pack, 20 packs/case
ES-0606	8.7 mL Transfer Pipet, fine tip, large bulb, 147 mm length, non-graduated, non-sterile	400/box, 10 boxes/case



## Special Pipets

Cat. No.	Description	UOM
ES-0616	6 mL Transfer Pipet, 225 mm length, non-graduated, non-sterile	500/box, 10 boxes/case
ES-0701	6 mL Transfer Pipet, 225 mm length, non-graduated, individually wrapped, sterile	400/box, 10 boxes/case
ES-0702	23 mL Transfer Pipet, 300 mm length, non-graduated, non-sterile	100/box, 10 boxes/case
ES-0703*	7 mL Bellows Pipet, 140 mm length, graduated to 1.5 mL, non-sterile	100/pack, 20 packs/case
ES-0704*	15 mL Bellows Pipet, 192 mm length, graduated to 5 mL, non-sterile	100/pack, 12 packs/case

\*Bellows Pipets are a special order item. Please contact us for more information.



## Pasteur Pipettes & Latex Dropper Bulbs

- Made of soda lime glass
- Constricted suction end to retain cotton plug
- Latex dropper bulbs are flexible and easy to attach
- **Pipette Packaging:** 250/dispenser box



Cat. No.	Description	UOM
ES81242	Pasteur Pipette, 150 mm	1000/case
ES81247	Pasteur Pipette, 230 mm	1000/case
ES81961	Latex Bulb, 1 mL	72/pack
ES81962	Latex Bulb, 2 mL	72/pack

## Rubber Bulbs

Standard rubber pipette bulbs feature a contoured shape and heavy-wall neck for easier gripping.

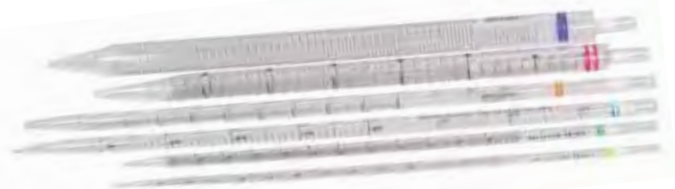


Cat. No.	Description	UOM
ES81971	Rubber Bulb, 12 mL	Each
ES81972	Rubber Bulb, 15 mL	Each
ES81974	Rubber Bulb, 30 mL	Each
ES81975	Rubber Bulb, 60 mL	Each
ES81978	Rubber Bulb, 150 mL	Each



## Serological Pipettes

- Sterile, plugged, and individually wrapped
- Extremely accurate
- Calibrated "to deliver"
- Filter plug made of breathable polyester fiber that creates a better liquid barrier than cotton



Cat. No.	Description	UOM
ES81019	1 mL Pipette, graduated, yellow	1000/box
ES81029	2 mL Pipette, graduated, green	800/box
ES81039	5 mL Pipette, graduated, blue	300/box
ES81049	10 mL Pipette, graduated, orange	200/box
ES81059	25 mL Pipette, graduated, red	200/box
ES81069	50 mL Pipette, graduated, purple	100/box
ES81019BLK	1 mL Pipette, graduated, yellow, bulk	1000/box
ES81029BLK	2 mL Pipette, graduated, green, bulk	700/box
ES81039BLK	5 mL Pipette, graduated, blue, bulk	500/box
ES81049BLK	10 mL Pipette, graduated, orange, bulk	350/box
ES81059BLK	25 mL Pipette, graduated, red, bulk	350/box
ES81069BLK	50 mL Pipette, graduated, purple, bulk	250/box

## AzerPette™ Automated Pipette Filler

- Ergonomic handle
- Variable speed control
- Cordless and rechargeable, with up to 8 hours of continuous operation
- Lightweight design with attached kickstand
- For pipettes from 10 to 100 mL



Cat. No.	Description	UOM
ES81098	AzerPette™ Automated Pipette Filler	Each

## Serological Pipette Storage Rack

- Snap together to allow for customizable configurations
- Magnets on both sides of each unit connect securely and safely to metal surfaces, such as filing cabinets, fume hoods, and freezers
- Angled shelves store 0.1 to 50 mL pipettes
- Protective cover helps prevent dust build-up



Cat. No.	Description	UOM
ES81095	Serological Pipette Rack	3/pack

## Azer Serological Pipette Controller

- Convenient alternative to a traditional bulb pipette
- Toggle switch allows for precise liquid siphoning and dispensing



Cat. No.	Description	UOM
ES81090B	Pipette Controller, blue	Each
ES81090G	Pipette Controller, green	Each
ES81090P	Pipette Controller, pink	Each
ES81090Y	Pipette Controller, yellow	Each
ES81090R	Pipette Controller, red	Each





## AzerPro Repeating Pipettor

- Offers 12 tip sizes, 10 volume adjustments and 120 program steps
- Maintenance-free: does not require additional resources such as power supply or batteries
- Easy-moving dosing button and light-weight design allows long dosing series to be dispensed conveniently
- Specially designed to precisely align with our Sapphire Classic and new Evolution syringe tips
- Resistant to common laboratory chemicals



Cat. No.	Description	UOM
ES42020-0000	AzerPro Repeating Pipettor	Each

## Classic Syringe Tips

- Provides reliable and repeatable results for a wide range of liquids including: viscous, infectious, and volatile
- Available in **sterile** and **non-sterile** options
- All sterile tips are individually wrapped and certified to be pyrogen, ATP, RNase, and DNase free



	NON-STERILE	STERILE	
Size	Cat. No.	Cat. No.	UOM
0.05 mL	ES40010-0000	ES40010-0008	100/pack
0.5 mL	ES40010-0001	ES40010-0009	100/pack
1.25 mL	ES40010-0002	ES40010-0010	100/pack
2.5 mL	ES40010-0003	ES40010-0011	100/pack
5.0 mL	ES40010-0004	ES40010-0012	100/pack
12.5 mL	ES40010-0005	ES40010-0013	100/pack

**Classic Style Syringe Tips** (standard and sterile), are suitable for: Ripette®, Ripette®pro, Ripette®genX, eLine™-Dispenser, Minilab 100, Minilab 101, Minilab 201, Distriman®, StepMate, EasyStep, EasyStep electronic, RepeatOne®, Handrop.

## Evolution Syringe Tips

- Provides reliable and repeatable results for a wide range of liquids including: viscous, infectious, and volatile
- Available in **sterile** and **non-sterile** options
- All sterile tips are individually wrapped and certified to be pyrogen, ATP, RNase, and DNase free



	NON-STERILE	STERILE	
Size	Cat. No.	Cat. No.	UOM
0.1 mL	ES40017-0000	ES40017-0011	100/Pack
0.2 mL	ES40017-0001	ES40017-0012	100/Pack
0.5 mL	ES40017-0003	ES40017-0013	100/Pack
1.0 mL	ES40017-0004	ES40017-0014	100/Pack
2.5 mL	ES40017-0005	ES40017-0015	100/Pack
5.0 mL	ES40017-0006	ES40017-0016	100/Pack
10.0 mL	ES40017-0007	ES40017-0017	100/Pack
25.0 mL	ES40017-0009	ES40017-0019	25/Pack
50.0 mL	ES40017-0010	ES40017-0020	25/Pack

**Evolution Syringe Tips** (standard and sterile), are suitable for: Ripette®, Ripette®pro, STEPmate, Minilab 100/101, Multipette® 4780, Multipette® plus, Multipette® M4, HandyStep®, HandyStep® electronic, Distriman

## Adapters for Evolution Syringe Tips



Cat. No.	Description	UOM
ES43001-0147	Adapter for 25 mL Tip	Each
ES43001-0148	Adapter for 50 mL Tip	Each

All product names are registered by their respective owners:

HandyStep® - Brand GmbH & Co. KG | bioclean®, Ripette® - Ritter GmbH | eLine™ - Sartorius AG | RepeatOne® - Starlab AG | Distriman®, Repetman® - Gilson Inc. | Multipette® - Eppendorf AG



## Barrier Filter Tips

- Low Binding Polymer Technology reduces binding of DNA, enzymes and proteins
- Super-micron barrier inhibits pipettor and carry-over contamination
- Barrier will not trap liquid or contaminate samples if over-pipetting



Cat. No.	Description	UOM
ES80150G	0.1 - 10 µL Ultra G Filter tip, sterile, low binding, graduations at 2 and 10 µL	960 Tips/Pack
ES80150L	0.1 - 10 µL LongReach Filter tip, sterile, low binding, graduations at 2 and 10 µL	960 Tips/Pack
ES80152	20 µL Filter tip, sterile, low binding, no graduations	960 Tips/Pack
ES80154	100 µL Filter tip, sterile, low binding, no graduations	960 Tips/Pack
ES80155	200 µL NX Filter tip, extended length, sterile, low binding, graduations at 10, 50 and 100 µL	960 Tips/Pack
ES80156	200 µL MultiGuard 3 Filter tip, extended length, sterile, low binding, graduations at 10, 50, 100, and 200 µL	960 Tips/Pack
ES80157	300 µL XT Filter tip, extended length, sterile, low binding, graduations at 10, 50, 100, and 200 µL	960 Tips/Pack
ES80158	1000 µL Filter tip, sterile, no graduations	1000 Tips/Pack
ES80159	1250 µL 1000XT Filter tip, extended length, sterile, graduations at 200, 500 and 1000 µL	768 Tips/Pack



## Racked Tips

- Universal fit, compatible with most research-grade pipettors
- Standard and extended length options
- Durable cell rack can be repeatedly autoclaved



Cat. No.	Description	UOM
ES80130G	0.1 - 10 µL Ultra G Tip, sterile, low binding, graduations at 2 and 10 µL	960 Tips/Pack
ES80130L	0.1 - 10 µL LongReach tip, extended length, sterile, low binding, graduations at 2, 5 and 10 µL	960 Tips/Pack
ES80135	200 µL Pipette tip, sterile, low binding, graduations at 10µL, 50µL and 100µL	960 Tips/Pack
ES80137	300 µL XT tip, sterile, low binding, graduations at 10, 50, 100 and 200 µL	960 Tips/Pack
ES80139	1250 µL 1000XT tip, extended length, sterile, low binding, graduations at 200, 500 and 1000 µL	768 Tips/Pack



## Pipette Tip Reload System

- Quickly and easily loads 96 tips into empty racks
- Compatible with most manufacturers' racks



Cat. No.	Description	UOM
ES80170L	0.1 - 10 µL LongReach tip refill, extended length, graduations at 2, 5 and 10 µL	960 Tips/Pack
ES80175	200 µL Pipette tip refill, graduations at 10µL, 50µL and 100µL	960 Tips/Pack
ES80176	200 µL Pipette tip refill, yellow, graduations at 10µL, 50µL and 100µL	960 Tips/Pack
ES80179	1250 µL 1000XT tip refill, extended length, graduations at 200, 500 and 1000 µL	768 Tips/Pack



## TipStation

- High density packaging saves bench space
- 192 tips per layer in a 2 x 96 format



Cat. No.	Description	UOM
ES80190L	0.1 - 10 µL LongReach tip station, extended length, sterile, low binding, graduations at 2, 5 and 10 µL	960 Tips/Stack
ES80195	200 µL Pipette tip station, sterile, low binding, graduations at 10, 50 and 100 µL	960 Tips/Stack







## OneTouch™ Pipette Tips

A revolutionary tip that is manufactured from two resins, OneTouch™ tips provide a soft color-coded top collar and a rigid, ultra-clear polypropylene body. The soft tip requires less pressure to create an optimal seal. Tips reduce the necessary sealing and reciprocal ejection force felt with traditional single resin polypropylene tips. Tips are excellent for multi-channel pipettors and reduce pipettor wear.

- OneTouch™ Tips create a leak-proof seal
- Minimal force required to eject the tip
- Ideal for multi-channel pipettors
- Top collar color-coded by volume



Cat No.	Description	UOM
ES80212	Pipet tips, OneTouch™, 1-20 uL	96/rack, 10 racks/pack
ES80232	Pipet tips, OneTouch™, 1-20 uL, sterile	96/rack, 10 racks/pack
ES80252	Pipet tips, OneTouch™, 10 uL filter tip, sterile	96/rack, 10 racks/pack
ES80215	Pipet tips, OneTouch™, 1-200 uL	96/rack, 10 racks/pack
ES80235	Pipet tips, OneTouch™, 1-200 uL, sterile	96/rack, 10 racks/pack
ES80255	Pipet tips, OneTouch™, 200 uL filter tip, sterile	96/rack, 10 racks/pack
ES80219	Pipet tips, OneTouch™, 1-1000 uL	96/rack, 8 racks/pack
ES80239	Pipet tips, OneTouch™, 1-1000 uL, sterile	96/rack, 8 racks/pack
ES80259	Pipet tips, OneTouch™, 1000 uL filter tip, sterile	96/rack, 8 racks/pack

## Pipette Storage

- Rotating holder holds up to 6 pipettors
- Pipettor caddies hold 3 to 6 pipettors
- For color add: CL (clear), SM (smoke), R (red), O (orange), GN (green), B (blue)



Cat. No.	Description	UOM
ES3924	Rotating Pipettor Holder, 6 slot, white	Each
ES3919	Pipettor Caddy, 3 slot, white	Each
ES3920	Pipettor Caddy, 3 slot, color	Each
ES3921	Pipettor Caddy, 6 slot, white	Each
ES3922	Pipettor Caddy, 6 slot, color	Each

## nUVaClean™ UV Pipette Carousel

The nUVaClean™ organizes, protects 6 pipettes, and destroys up to 99% of unwanted contamination. A high-efficiency reflector/concentrator to completely bathe pipette shafts in 254 nm UV light. It eliminates cross contamination and cleans 6 pipettes in 28 minutes.



Cat. No.	Description	UOM
ES81994	nUVaClean™ UV Pipette Carousel with germicidal UV lamp	Each

## Pipettor Stand

- Universal- fits all popular pipettes
- Non-skid rubber feet
- Multi-channel "window" slots



Cat. No.	Description	UOM
ES81998-3	Pipette Rack, for 3 pipettes (or up to one multi-channel)	Each
ES81998-5	Pipette Rack, for 5 pipettes (or up to two multi-channel)	Each
ES81998-6	Pipette Rack, for 6 pipettes (or up to four multi-channel)	Each



## xPIPETTE™

- Light spring force improves ergonomics with every draw by reducing plunger forces
- Large cushioned silicone ejector reduces dynamic stress, lowering ejection force

Cat. No.	Description	UOM
ES81949-2	xPIPETTE Single Channel Pipette, 0.2 to 2 µL	Each
ES81949-10	xPIPETTE Single Channel Pipette, 1 to 10 µL	Each
ES81949-20	xPIPETTE Single Channel Pipette, 2 to 20 µL	Each
ES81949-100	xPIPETTE Single Channel Pipette, 10 to 100 µL	Each
ES81949-200	xPIPETTE Single Channel Pipette, 20 to 200 µL	Each
ES81949-1M	xPIPETTE Single Channel Pipette, 100 to 1000 µL	Each



## xTIP4™ Racked Tips

- X-Resin® is a low retention surface that maximizes sample recovery
- Blade® minimizes surface tension, eliminates hanging droplet formation and increases accuracy and precision

Cat. No.	Description	UOM
ES80412	20 µL non-filtered xTIP, X-Resin, low-retention, non-sterile, racked	960/pack
ES80422	20 µL non-filtered xTIP, X-Resin, low-retention, sterile, racked	960/pack
ES80432	20 µL filtered xTIP, X-Resin, low-retention, sterile, racked	960/pack
ES80415	250 µL non-filtered xTIP, X-Resin, low-retention, non-sterile, racked	960/pack
ES80425	250 µL non-filtered xTIP, X-Resin, low-retention, sterile, racked	960/pack
ES80434	200 µL filtered xTIP, X-Resin, low-retention, sterile, racked	960/pack
ES80416	300 µL non-filtered xTIP, X-Resin, low-retention, non-sterile, racked	960/pack
ES80426	300 µL non-filtered xTIP, X-Resin, low-retention, sterile, racked	960/pack
ES80436	300 µL filtered xTIP, X-Resin, low-retention, sterile, racked	960/pack
ES80418	1000 µL non-filtered xTIP, X-Resin, low-retention, non-sterile, racked	768/pack
ES80428	1000 µL non-filtered xTIP, X-Resin, low-retention, sterile, racked	768/pack
ES80438	1000 µL filtered xTIP, X-Resin, low-retention, sterile, racked	768/pack
ES80419	1200 µL non-filtered xTIP, X-Resin, low-retention, non-sterile, racked	768/pack
ES80429	1200 µL non-filtered xTIP, X-Resin, low-retention, sterile, racked	768/pack
ES80439	1200 µL filtered xTIP, X-Resin, low-retention, sterile, racked	768/pack



## xTIP4™ CleanPak Reload

- CleanPak uses 1/5 the footprint as a pack of racked tips
- Inserts are easy to transfer to your empty rack, one at a time or all at once
- 100% recyclable packaging and uses 50% less plastic than racked tips

Cat. No.	Description	UOM
ES80452	20 µL non-filtered xTIP Reload, X-Resin, low-retention, non-sterile	960/pack
ES80462	20 µL non-filtered xTIP Reload, X-Resin, low-retention, sterile	960/pack
ES80455	250 µL non-filtered xTIP Reload, X-Resin, low-retention, non-sterile	960/pack
ES80465	250 µL non-filtered xTIP Reload, X-Resin, low-retention, sterile	960/pack
ES80456	300 µL non-filtered xTIP Reload, X-Resin, low-retention, non-sterile	960/pack
ES80466	300 µL non-filtered xTIP Reload, X-Resin, low-retention, sterile	960/pack
ES80458	1000 µL non-filtered xTIP Reload, X-Resin, low-retention, non-sterile	768/pack
ES80468	1000 µL non-filtered xTIP Reload, X-Resin, low-retention, sterile	768/pack
ES80459	1200 µL non-filtered xTIP Reload, X-Resin, low-retention, non-sterile	768/pack
ES80469	1200 µL non-filtered xTIP Reload, X-Resin, low-retention, sterile	768/pack



## xTIP™ Tip Eject Reload

- Easily operated with one hand without contact with tips or rack, rack clips into place
- 100% recyclable packaging and empty racks can be autoclaved for multiple uses

Cat. No.	Description	UOM
ES80492	20 µL non-filtered xTIP Reload, X-Resin, low-retention, sterile	960/pack
ES80495	250 µL non-filtered xTIP Reload, X-Resin, low-retention, sterile	960/pack
ES80498	1000 µL non-filtered xTIP Reload, X-Resin, low-retention, sterile	768/pack
ES80499	1200 µL non-filtered xTIP Reload, X-Resin, low-retention, sterile	768/pack



xTIP4™, FlexFit®, StarStop®, X-Resin®, Blade® are all registered trademarks or trademarks of Biotix, Inc.

Phone: 1-877-770-2937 • Fax: 610-901-3046 • [Orders@AzerSci.com](mailto:Orders@AzerSci.com) • [www.AzerSci.com](http://www.AzerSci.com)





## Proline® Plus Mechanical Pipette

- Proline® Plus mechanical pipette by Sartorius is available in single and multichannel pipettors
- Ergonomic design with light pipetting forces, comfortable handle and finger support for reduced risk of strain injuries
- Minimized risk of contamination with Safe-Cone Filters and full autoclavability
- Highly durable with strengthened structure for heavy use

Cat. No.	Description	UOM
ES81951-103	Proline® Plus Single channel mechanical pipette, 0.1-3 µL	Each
ES81951-110	Proline® Plus Single channel mechanical pipette, 0.5-10 µL	Each
ES81951-120	Proline® Plus Single channel mechanical pipette, 2-20 µL	Each
ES81951-1100	Proline® Plus Single channel mechanical pipette, 10-100 µL	Each
ES81951-1200	Proline® Plus Single channel mechanical pipette, 20-200 µL	Each
ES81951-11M	Proline® Plus Single channel mechanical pipette, 100-1000 µL	Each
ES81951-15M	Proline® Plus Single channel mechanical pipette, 500-5000 µL	Each
ES81951-110M	Proline® Plus Single channel mechanical pipette, 1-10 mL	Each
ES81951-810	Proline® Plus 8- channel mechanical pipette, 0.5-10 µL	Each
ES81951-8100	Proline® Plus 8- channel mechanical pipette, 10-100 µL	Each
ES81951-8300	Proline® Plus 8- channel mechanical pipette, 30-300 µL	Each
ES81951-1210	Proline® Plus 12- channel mechanical pipette, 0.5-10 µL	Each
ES81951-12100	Proline® Plus 12- channel mechanical pipette, 30-100 µL	Each
ES81951-12300	Proline® Plus 12- channel mechanical pipette, 30-300 µL	Each



## Tacta Mechanical Pipette

- The Tacta mechanical pipette by Sartorius is fully autoclavable and available in single and multichannel pipettes
- The unique Optilock dual locking system provides flexibility for volume adjustment and locking
- The new Optiject levered tip ejection system provides a controlled and smooth tip ejection
- Safe-Cone filters provide cost effective contamination prevention
- 4-digit display for accurate and easy volume setting

Cat. No.	Description	UOM
ES81952-103	Tacta Single channel mechanical pipette, 0.1-3 µL	Each
ES81952-110	Tacta Single channel mechanical pipette, 0.5-10 µL	Each
ES81952-120	Tacta Single channel mechanical pipette, 2-20 µL	Each
ES81952-1100	Tacta Single channel mechanical pipette, 10-100 µL	Each
ES81952-1200	Tacta Single channel mechanical pipette, 20-200 µL	Each
ES81952-11M	Tacta Single channel mechanical pipette, 100-1000 µL	Each
ES81952-15M	Tacta Single channel mechanical pipette, 500-5000 µL	Each
ES81952-110M	Tacta Single channel mechanical pipette, 1-10 mL	Each
ES81952-810	Tacta 8- channel mechanical pipette, 0.5-10 µL	Each
ES81952-8100	Tacta 8- channel mechanical pipette, 5-100 µL	Each
ES81952-8300	Tacta 8- channel mechanical pipette, 30-300 µL	Each
ES81952-1210	Tacta 12- channel mechanical pipette, 0.5-10 µL	Each
ES81952-12100	Tacta 12- channel mechanical pipette, 5-100 µL	Each
ES81952-12300	Tacta 12- channel mechanical pipette, 30-300 µL	Each





## Picus® Electronic Pipette

- The Picus® electronic pipette by Sartorius is lightweight for effortless pipetting experience and is available in single and multichannel
- Electronic piston control and brake guarantee accurate and precise pipetting results, independent of the user
- Conveniently located soft-touch operating button and electronic tip ejection help minimize muscle strain
- Intuitive user interface in a choice of language options: English, French, German, Russian and Chinese enables ease of use

Cat. No.	Description	UOM
ES81953-110	Picus® Single channel electronic pipette, 0.2-10 µL	Each
ES81953-1120	Picus® Single channel electronic pipette, 5-120 µL	Each
ES81953-1300	Picus® Single channel electronic pipette, 10-300 µL	Each
ES81953-11M	Picus® Single channel electronic pipette, 50-1000 µL	Each
ES81953-15M	Picus® Single channel electronic pipette, 0.1-1.5 mL	Each
ES81953-110M	Picus® Single channel electronic pipette, 0.5-10 mL	Each
ES81953-810	Picus® 8- channel electronic pipette, 0.2-10 µL	Each
ES81953-8120	Picus® 8- channel electronic pipette, 5-120 µL	Each
ES81953-8300	Picus® 8- channel electronic pipette, 10-300 µL	Each
ES81953-81200	Picus® 8- channel electronic pipette, 50-1200 µL	Each
ES81953-1210	Picus® 12- channel electronic pipette, 0.2-10 µL	Each
ES81953-12120	Picus® 12- channel electronic pipette, 5-120 µL	Each
ES81953-12300	Picus® 12- channel electronic pipette, 10-300 µL	Each
ES81953-121200	Picus® 12- channel electronic pipette, 50-1200 µL	Each



## Picus® NxT Electronic Pipette

- The Picus® NxT electronic pipette by Sartorius is lightweight for effortless pipetting experience and is available in single and multichannel
- Repeated blow-out function helps dispense every last droplet, ensuring complete sample recovery
- Electronic piston control and brake guarantee accurate and precise pipetting results, regardless of user skill level
- Calibration adjustments in 1-, 2-, or 3- points and maintenance and calibration alerts
- Intuitive user interface in a choice of language options: English, French, German, Russian and Chinese enables ease of use

Cat. No.	Description	UOM
ES81954-110	Picus® NxT Single channel electronic pipette, 0.2-10 µL	Each
ES81954-1120	Picus® NxT Single channel electronic pipette, 5-120 µL	Each
ES81954-1300	Picus® NxT Single channel electronic pipette, 10-300 µL	Each
ES81954-11M	Picus® NxT Single channel electronic pipette, 50-1000 µL	Each
ES81954-15M	Picus® NxT Single channel electronic pipette, 0.1-1.5 mL	Each
ES81954-110M	Picus® NxT Single channel electronic pipette, 0.5-10 mL	Each
ES81954-810	Picus® NxT 8- channel electronic pipette, 0.2-10 µL	Each
ES81954-8120	Picus® NxT 8- channel electronic pipette, 5-120 µL	Each
ES81954-8300	Picus® NxT 8- channel electronic pipette, 10-300 µL	Each
ES81954-81200	Picus® NxT 8- channel electronic pipette, 50-1200 µL	Each
ES81954-1210	Picus® NxT 12- channel electronic pipette, 0.2-10 µL	Each
ES81954-12120	Picus® NxT 12- channel electronic pipette, 5-120 µL	Each
ES81954-12300	Picus® NxT 12- channel electronic pipette, 10-300 µL	Each
ES81954-121200	Picus® NxT 12- channel electronic pipette, 50-1200 µL	Each







## Pipette Tips for Automation

- High concentricity and fitting accuracy
- Precision pipette tips with low residual moisture
- Manufactured on high-automated devices under clean room conditions
- Free of DNase, RNase, and endotoxins
- Available in ready-to-use racks, or loose bulk packs
- Made from pure Polypropylene (PP)



### blackKnights

blackKnights is our line of conductive tips for use in automated liquid handling systems.

The conductivity enables the system to recognize the filling height and will guarantee a minimal immersion of the tip into the liquid.

### clearKnights

clearKnights is our line of clear tips for use in automated liquid handling systems. For known liquid levels, the high clarity of the tips allows for observation of samples during the pipetting process.

## Type Tecan | blackKnights

#### Compatible with:

- Tecan: Genesis, Freedom EVO, MiniPrep, Carvo
- Qiagen/Corbett: CAS 1200/4200/4800, QIAgility
- Perkin Elmer (Packard): Multiprob II, Janus
- Abbott Diagnostic: m2000



Cat. No.	Description	Packaging	UOM
ES49005-0000	10 µL, tray, dual-pack	96/RK, 10 RKS/PK, 18 PKS/CS	17280/CS
ES49005-0006	10 µL, tray, blister - 2 pack	96/RK, 2 RKS/PK, 12 PKS/CS	2304/CS
ES49006-0000	50 µL, tray, dual-pack	96/PK, 10 RKS/PK, 18 PKS/CS	17280/CS
ES49006-0006	50 µL, tray, blister - 2 pack	96/PK, 2 RKS/PK, 12 PKS/CS	2304/CS
ES49006-1106	50 µL, filter, tray, blister - 2 pack, pre-sterilized	96/PK, 2 RKS/PK, 12 PKS/CS	2304/CS
ES49002-0000	200 µL, tray, dual-pack	96/PK, 10 RKS/PK, 18 PKS/CS	17280/CS
ES49002-0006	200 µL, tray, blister - 2 pack	96/PK, 2 RKS/PK, 12 PKS/CS	2304/CS
ES49002-1106	200 µL, filter, tray, blister - 2 pack, pre-sterilized	96/PK, 2 RKS/PK, 12 PKS/CS	2304/CS
ES49002-1004	200 µL, tray, blister - 5 pack, pre-sterilized	96/PK, 5 RKS/PK, 16 PKS/CS	7680/CS
ES49003-0000	1000 µL, tray, dual-pack	96/PK, 10 RKS/PK, 10 PKS/CS	9600/CS
ES49003-0006	1000 µL, tray, blister - 2 pack	96/PK, 2 RKS/PK, 12 PKS/CS	2304/CS
ES49003-1106	1000 µL, filter, tray, blister - 2 pack, pre-sterilized	96/PK, 2 RKS/PK, 12 PKS/CS	2304/CS
ES49003-1104	1000 µL, filter, tray, blister - 5 pack, pre-sterilized	96/PK, 5 RKS/PK, 10 PKS/CS	4800/CS



## Type Tecan | clearKnights

#### Compatible with:

- Tecan: Genesis, Freedom EVO, MiniPrep, Cavo
- Qiagen/Corbett: CAS 1200/4200/4800, QIAgility
- Perkin Elmer (Packard): Multiprobe II, Janus
- Abbott Diagnostic: m2000

Cat. No.	Description	Packaging	UOM
ES49106-0000	50 µL, tray, dual-pack	96/RK, 10 RKS/PK, 18 PKS/CS	17280/CS
ES49106-1106	50 µL, filter, tray, blister- 2 pack, pre-sterilized	96/RK, 2 RKS/PK, 12 PKS/CS	2304/CS
ES49102-0000	200 µL tray, dual-pack	96/RK, 10 RKS/PK, 18 PKS/CS	17280/CS
ES49102-1106	200 µL, filter, tray, blister- 2 pack, pre-sterilized	96/RK, 2 RKS/PK, 12 PKS/CS	2304/CS
ES49103-0000	1000 µL tray, dual-pack	96/RK, 10 RKS/PK, 18 PKS/CS	9600/CS
ES49103-1106	1000 µL, filter, tray, blister- 2 pack, pre-sterilized	96/RK, 2 RKS/PK, 12 PKS/CS	2304/CS





## Type Hamilton | blackKnights

### Compatible with:

- Microlab Star™
- Nimbus®
- Vantage™



Cat. No.	Description	Packaging	UOM
ES49011-0004	10 µL, tray, blister - 5 pack	96/RK, 5 RKS/PK, 16 PKS/CS	7680/CS
ES49010-0004	50 µL, tray, blister - 5 pack	96/RK, 5 RKS/PK, 16 PKS/CS	7680/CS
ES49010-0005	50 µL, stacked in racks	96/RK, 4 RKS/PK, 10 PKS/CS	3840/CS
ES49010-0104	50 µL, filter, tray, blister - 5 pack	96/RK, 5 RKS/PK, 16 PKS/CS	7680/CS
ES49010-1004	50 µL, tray, blister - 5 pack, pre-sterilized	96/RK, 5 RKS/PK, 16 PKS/CS	7680/CS
ES49010-1104	50 µL, filter, tray, blister - 5 pack, pre-sterilized	96/RK, 5 RKS/PK, 16 PKS/CS	7680/CS
ES49008-0005	300 µL, stacked in racks	96/RK, 4 RKS/PK, 10 PKS/CS	3840/CS
ES49008-0004	300 µL, tray, blister - 5 pack	96/RK, 5 RKS/PK, 16 PKS/CS	7680/CS
ES49008-0104	300 µL, filter, tray, blister - 5 pack	96/RK, 5 RKS/PK, 16 PKS/CS	7680/CS
ES49008-1004	300 µL, tray, blister - 5 pack, pre-sterilized	96/RK, 5 RKS/PK, 16 PKS/CS	7680/CS
ES49008-1104	300 µL, filter, tray, blister - 5 pack, pre-sterilized	96/RK, 5 RKS/PK, 16 PKS/CS	7680/CS
ES49009-0004	1000 µL, tray, blister - 5 pack	96/RK, 5 RKS/PK, 10 PKS/CS	4800/CS
ES49009-0104	1000 µL, filter, tray, blister - 5 pack	96/RK, 5 RKS/PK, 10 PKS/CS	4800/CS
ES49209-0104	1000 µL, tray, blister - 5 pack, MagNA Pure (Roche)	96/RK, 5 RKS/PK, 10 PKS/CS	4800/CS
ES49009-1004	1000 µL, tray, blister-5, pre-sterilized	96/RK, 5 RKS/PK, 10 PKS/CS	4800/CS
ES49009-1104	1000 µL, filter, tray, blister-5, pre-sterilized	96/RK, 5 RKS/PK, 10 PKS/CS	4800/CS

## Type Qiagen | blackKnights

### Compatible with:

- Abbott Diagnostic: en4lisa
- bioMérieux: DaVinci
- Bio-Rad: Evolis
- Biotest: Quickstep
- Dade Behring (Siemens): BEP 2000 Advance
- DiaSorin: ETI-Max 3000
- Diffchamb: T4U
- Euroimmun: Euroimmun Analyzer
- Grifols: Triturus
- Human: Elisys Quattro
- Qiagen: Biorobot 3000, 8000, 9600, 9604, Biorobot universal
- Stratec: Gemini
- Virion\Serion: Immunomat TWINSsystem



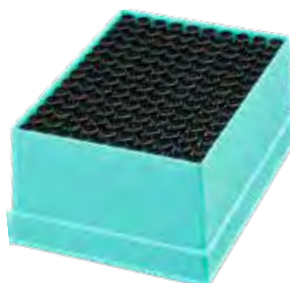
Cat. No.	Description	Packaging	UOM
ES49000-0000	300 µL, tray, dual-pack	96/RK, 10 RKS/PK, 18 PKS/CS	17280/CS
ES49001-0001	1100 µL, PE bag	960/BG, 5 BGS/CS	4800/CS
ES49001-0000	1100 µL, tray, dual-pack	96/RK, 10 RKS/PK, 10 PKS/CS	9600/CS
ES49001-1106	1100 µL, filter, tray, blister-2 pack, pre-sterilized	96/RK, 2 RKS/PK, 12 PKS/CS	2304/CS

## Type Olympus | blackKnights

### Compatible with:

- Beckman Coulter: AutoMate 1250/2550
- Olympus: OLA 2500

Cat. No.	Description	Packaging	UOM
ES49044-0000	1200 µL, rack	140/RK, 8 RKS/PK	1120/CS
ES49044-0100	1200 µL, filter, rack	140/RK, 8 RKS/PK	1120/CS





*Sapphire*  **Advance**

## Microplates & Capmats

- Manufactured from virgin polypropylene
- Certified RNase, DNase, and Pyrogen Free
- Automation compatible, with alphanumeric reference
- Ultra-flat surfaces, with raised well design for improved heat sealing and prevention of cross contamination
- Allows for storage down to -80°C
- These plates are transparent and non-sterile
- Corresponding cap mats are made of silicon and non-sterile



## Well-Plates

Cat. No.	Description	Bottom	Size	UOM	Cap Mat
ES53442	96-round well plate	U-bottom	550 µL	10/pack, 10 packs/case	ES53910
ES53461	96-round well plate	U-bottom	1.2 mL	5/pack, 10 packs/case	ES53910
ES53483	96-round well plate	U-bottom	1.3 mL	5/pack, 10 packs/case	ES53931
ES53462	96-round well plate	U-bottom	2 mL	5/pack, 10 packs/case	ES53910
ES53441	96-round well plate	V-bottom	550 µL	10/pack, 10 packs/case	ES53910
ES53482	96-round well plate	V-bottom	600 µL	5/pack, 10 packs/case	ES53933
ES53471	96-square well plate	V-bottom	1 mL	10/pack, 10 packs/case	ES53917
ES53472	96-square well plate	V-bottom	2 mL	5/pack, 10 packs/case	ES53917
ES53474	24-square well plate	U-bottom	10 mL	5/pack, 10 packs/case	ES53914
ES53473	48-square well plate	V-bottom	5 mL	5/pack, 10 packs/case	ES53916
ES53478	384-square well plate	V-bottom	120 µL	5/pack, 10 packs/case	ES53919
ES53479	384-square well plate	V-bottom	240 µL	5/pack, 10 packs/case	ES53919

## Capmats

Cat. No.	Description	UOM
ES53910	96-round well cap mat, pierceable ("-" perforation), alphanumeric grid	10/pack, 5 packs/case
ES53931	96-round well cap mat, pierceable ("-" perforation), alphanumeric grid	10/pack, 5 packs/case
ES53933	96-round well cap mat, pierceable ("-" perforation), alphanumeric grid	10/pack, 5 packs/case
ES53917	96-square well cap mat, pierceable ("-" perforation), alphanumeric grid	10/pack, 5 packs/case
ES53914	48-square well cap mat, non-perforated, blank	10/pack, 5 packs/case
ES53916	48-square well cap mat, non-perforated, blank	10/pack, 5 packs/case
ES53919	384-square well cap mat, non-perforated, alphanumeric grid	10/pack, 5 packs/case

Advance plates comparable to Corning/Axygen® plates - Axxygen® is a registered trademark of Corning Incorporated

## Magnetic Well-Plates

- High resistance towards commonly used chemicals, solvents and alcohols
- To enable a good bioturbation of samples, the square wells become cylindrical at the bottom



96 Tip Comb



96-Well Plate Square Well, 0.2 mL

Cat. No.	Description	UOM
ES43001-0501	96 Well Magnetic Plate, PP, Automation compatible bottom, 0.2 mL	60/case
ES43001-0502	96 Well Magnetic Plate, PP, Automation compatible bottom, 2 mL	60/case
ES43001-0503	Tip comb for 96-Well Magnetic Plates	60/case



96-Well Plate Square Well, 2 mL



## Sapphire 96-Well Plates

Developed with standard plate dimensions (128 x 85 mm), these plates are compatible with most common laboratory instruments. The polystyrene option assures an optimal surface for microscopic analysis, whereas the polypropylene option has been decoupled by intermediate wells to significantly reduce the mixing of samples by carryover. Plates are coded alphanumerically to aid in sample identification.

Cat. No.	Description	UOM
ES43001-0600	96-Well Plate, PP, U-Bottom, Transparent, Non-Sterile, 300 µL	64/case
ES43001-0117	96-Well Plate, PS, U-Bottom, Clear, Non-Sterile, 300 µL	100/case
ES43001-0118	96-Well Plate, PS, V-Bottom, Clear, Non-Sterile, 240 µL	100/case
ES43001-0119	96-Well Plate, PS, Flat-Bottom, Clear, Non-Sterile, 350 µL	100/case



## Sapphire medio Plates

This compact design offers a storage stacking space reduction of up to 50% due to tangentially shared wells. Higher well rims allow for an airtight seal and reduces the risk of cross-contamination. Newly developed conical bottoms enhance bioturbation. Plates are coded alphanumerically to aid in sample identification.

Cat. No.	Description	UOM
ES43001-0101	96-Well Plate, PP, Conical-Bottom, Transparent, Non-Sterile, 1 mL	32/case
ES43001-0102	96-Well Plate, PP, Conical-Bottom, Transparent, Non-Sterile, 0.5 mL	40/case
Accessories		
ES43001-0104	96-Well Capmat, Pre-pierced Puncture ("x" perforation), Non-Sterile	20/case



## Sapphire 96-Well Deep Plate, Round Wells

The raised well feature minimizes the risk of cross-contamination, and increases the security of heat-sealing or sealing with adhesive films. This product offers an optimized footprint following SBS standards, and is ideal for applications that require exposure to extreme temperatures and sensitive diagnostics. Additionally, the U-shaped well bottom characteristic is ideal for reducing death volume. Plates are coded alphanumerically to aid in sample identification.

**2 mL plates:** Offer 96 continuous shared round wells. This plate offers more versatility as it enables the ability to mix and separate two samples of 1 mL each. It is compatible to all common robotic systems as it was developed following SBS regulations, and can be used with most common storage systems due to its low plate profile.

**PLUS\* Plates:** Feature air escape and raised rims – ideal for use in thermal cyclers or for defrosting samples in hot-water baths.

Cat. No.	Description	UOM
ES43001-0010	96-Well Deep Plate, PS, U-Bottom, Non-Sterile, 1 mL	20/case
ES43001-0016	96-Well Deep Plate, PP, U-Bottom, Non-Sterile, 1 mL	20/case
ES43001-0116	96-Well Deep Plate PLUS*, PP, U-Bottom, Non-Sterile, 1 mL	20/case
ES43001-0103	96-Well Deep Plate, PP, U-Bottom, Non-Sterile, 2 mL	20/case
ES43001- 1016	96-Well Deep Plate, PP, U-Bottom, Sterile, 1 mL	10/case
ES43001-1103	96-Well Deep Plate, PP, U-Bottom, Sterile, 2 mL	10/case

Accessories		
ES43001-0017	96-Well Capmat, Pre-pierced Puncture ("x" perforation), Non-Sterile, 1 mL	20/case
ES43001-0104	96-Well Capmat, Pre-pierced Puncture ("x" perforation), Non-Sterile, 2 mL	20/case







## Sapphire Square Well Plates

These plates have been developed primarily for sample storage. The square bottoms allow for higher capacity, while the thin-walled, parallel cavities ensure minimized cross-contamination between wells. For high-quality analysis, these plates are manufactured with using pure polypropylene without the use of lubricants. Plates can be closed using adhesive films, heat-sealing, or the capmat accessory which ensures closing without any liquid displacement or cross-contamination. Plates are coded alphanumerically to aid in sample identification.



Cat. No.	Description	UOM
ES43001-0020	96-Well Plate, PP, U-Bottom, Transparent, Non-Sterile, 2 mL	20/case
ES43001-0062	48-Well Plate, PP, V-Bottom, Transparent, Non-Sterile, 5 mL	20/case
ES43001-0066	24-Well Plate, PP, Tapered Bottom, Transparent, Non-Sterile, 10 mL	20/case
ES43001-0200	96-Well Plate, PP, U-Bottom, Transparent, Sterile, 2 mL	10/case
ES43001-1062	48-Well Plate, PP, U-Bottom, Transparent, Sterile, 5 mL	10/case
ES43001-1066	24-Well Plate, PP, Tapered Bottom, Transparent, Sterile, 10 mL	10/case

### Accessories

ES43001-0022	96-Well Capmat, Pre-pierced Puncture ("x" perforation), Non-Sterile, 2 mL	20/case
ES43001-0069	48-Well Capmat, Pre-pierced Puncture ("x" perforation), Non-Sterile, 5 mL	20/case
ES43001-0070	24-Well Capmat, Pre-pierced Puncture ("x" perforation), Non-Sterile, 10 mL	20/case

## Sapphire 384-Well Plates

Well plates, for automated screening and storage systems, offer a higher well rim feature which prevents cross-contamination, and allows for easier plate closure with adhesive films. The flat well bottoms are ideal for microscopic and optical applications, whereas V-bottoms are ideal for high sample recovery. Rounded cavities ensure capillarity reduction, and the 3 mm high frame enables stable, slip-free stacking. Plates are coded alphanumerically to aid in sample identification.

**Transparent (PP):** Ideal for storing samples

**Optical Clear (PS):** Ideal for microscopic applications

**White (PS):** Provides high luminescence

**Black (PS):** Ideal for fluorescence polarization



PS, clear



PP, transparent



PS, white



PS, black

Cat. No.	Description	UOM
ES43001-0035	384-Well Plate, PP, Flat-Bottom, Transparent, Non-Sterile, 60 $\mu$ L	100/case
ES43001-0036	384-Well Plate, PS, Flat-Bottom, Clear, Non-Sterile, 60 $\mu$ L	100/case
ES43001-0037	384-Well Plate, PS, Flat-Bottom, White, Non-Sterile, 60 $\mu$ L	100/case
ES43001-0038	384-Well Plate, PS, Flat-Bottom, Black, Non-Sterile, 60 $\mu$ L	100/case
ES43001-0039	384-Well Plate, PS, V-Bottom, Clear, Non-Sterile, 60 $\mu$ L	100/case
ES43001-0098	384-Well Plate, PS, V-Bottom, White, Non-Sterile, 60 $\mu$ L	100/case
ES43001-0099	384-Well Plate, PS, V-Bottom, Black, Non-Sterile, 60 $\mu$ L	100/case



## Sapphire MicroCentrifuge Tubes

- Made from high-clarity, polypropylene
- Reinforced conical bottom
- Usable temperature range of -90°C to +121°C

Cat. No.	Description	UOM
ES84610	0.65 mL tube	1,000/bag
ES84641	1.7 mL tube	500/bag
ES84671	2.0 mL tube	400/bag



## Sapphire 5 mL Centrifuge Tube

- Made from high-clarity, polypropylene
- Syringe-permeable cap
- Dual graduations at 0.2 mL and 0.5 mL
- Cap provides secure seal from -86°C to +80°C.
- Locking cap prevents tubes from opening during high heat applications (sold separately)

**Max RCF:** 25,000 x g



Cat. No.	Description	UOM
ES84682	5 mL Tube, sterile, clear	20/pack, 10 packs/case
ES84680	5 mL Tube, non-sterile, clear	100/pack, 2 packs/case
ES84680-B	5 mL Tube, non-sterile, blue	100/pack, 2 packs/case
ES84680-G	5 mL Tube, non-sterile, green	100/pack, 2 packs/case
ES84680-R	5 mL Tube, non-sterile, red	100/pack, 2 packs/case
ES84680-Y	5 mL Tube, non-sterile, yellow	100/pack, 2 packs/case
ES84688	Cap Locks for 5 mL Tubes	20/pack

## Centrifuge Tube Racks

- Combo and single racks can be stacked in open or closed position, and collapse for easy storage
- Imprinted grid for organization

Cat. No.	Description	UOM
ES82912	Combo Rack, blue	2/pack
ES82913	Combo Rack, pink	2/pack
ES82932	Single Rack for 15 mL tubes, purple	2/pack
ES82934	Single Rack for 50 mL tubes, green	2/pack
ES87245	Multi tube rack, holds 50/15/1.5/2.0/0.5 mL tubes, blue	5/pack, 4 pack/case

## Sapphire 5 mL Screw Top Centrifuge Tube



### 5 mL Screw Top Centrifuge Tube

- Made of virgin polypropylene
  - Dual graduations at 0.2 mL and 0.5 mL
  - 20mm screw cap closes with a single 360° turn
  - Useable temperature range of -86°C to 110°C
- Max RCF:** 25,000 x g

Cat. No.	Description	UOM
ES84680-SC	5 mL Tube, bulk, non-sterile	500/case
ES84682-SC	5 mL Tube, racked, sterile	500/case



## Centrifuge Tubes

- Made of ultra-clear polypropylene
- Features printed graduation marks
- Large, white writing surface
- Usable temperature range of -86°C to 121°C

**Max RCF (15 mL):** 12,000 x g

**Max RCF (50 mL):** 15,000 x g



Cat. No.	Description	UOM
ES-9151N	15 mL Tube, flat cap, sterile, racked	50/rack, 500/case
ES-9152N	15 mL Tube, flat cap, sterile, bulk	25/bag, 500/case
ES-9501N	50 mL Tube, flat cap, sterile, racked	25/rack, 500/case
ES-9502N	50 mL Tube, flat cap, sterile, bulk	25/bag, 500/case

## Centrifuge Tubes, Opaque Black

- For use with light sensitive samples
- Feature large white labeling areas
- Conical bottom

**Max RCF (1.5 mL):** 18,000 x g

**Max RCF (5 mL):** 25,000 x g

**Max RCF (15 mL):** 12,000 x g

**Max RCF (50 mL):** 16,000 x g



Cat. No.	Description	UOM
ES4250-15BL	1.5 mL Tube, Microcentrifuge Tube, black	500/case
ES84680BL	5 mL Snap Top Tube, black, non-sterile	200/case
ES84682-SC-BL	5 mL Screw Top Tube, black, racked, sterile	50/RK, 500/CS
ES84461	15 mL Centrifuge Tube, black	500/case
ES84465	50 mL Centrifuge Tube, black	500/case







## Spectrafuge™ 6C

- Designed for quick production of platelet poor plasma (PPP) and platelet rich plasma (PRP), as well as other applications in the clinical lab
- Includes 6 place rotor that accepts round or conical bottom 15 or 10 mL tubes
- Adapters for smaller sizes are available, sold separately
- Control panel features easy turn knobs and digital displays for time and speed
- Can be set as low as 30 seconds or to the "ON" position for continuous run



Cat. No.	Description	UOM
ESC6C120V	Spectrafuge™ 6C, digital controls, includes 6 x 10/15 mL rotor	Each
ESC020017A	Combination Adapter for 5/7/10 mL tubes	Each

## Spectrafuge™ 24D

- Controlled by a precise digital microprocessor
  - Easy-access 24 x 1.5 mL rotor included
  - Innovative rotor places tubes on a plateau for easy handling
  - Powerful, brushless motor quickly accelerates
  - Features two simple knobs; one for speed and one for time
  - Rotor can easily be removed for cleaning and autoclaving
- Maximum Speed:** 13,300 rpm/16,000 x g



Cat. No.	Description	UOM
ESC24120V	Spectrafuge™, standard rotor, gray	Each
ESC24B120V	Spectrafuge™, standard rotor, blue	Each
ESC24P120V	Spectrafuge™, standard rotor, purple	Each
ESC24R120V	Spectrafuge™, standard rotor, red	Each
ESC24T120V	Spectrafuge™, standard rotor, teal	Each
ESC24SS	StripSpin™ Adapter for 8 x 0.2 mL tubes and strips	Each
ESC1205	Individual Adapter for 0.4/0.6 mL tubes	6/pack
ESC1206	Individual Adapter for 0.4/0.25 mL tubes	6/pack
ESC1222	Individual Adapter for 0.2 mL thermo cycling tubes	6/pack

## AzerFuge High Speed Microcentrifuge

- Holds 12 x 1.5/0.2 mL tubes
- Compact at only 9" wide
- Speed range of 200 to 15,500 rpm (up to 16,100 x g)
- Accelerates in 12 seconds and decelerates in just 10 seconds
- Features large, user-friendly LCD controls
- Airflow pattern minimizes sample temperature increases during longer runs at high speeds



Cat. No.	Description	UOM
ES89425	AzerFuge High Speed Microcentrifuge	Each
ES89425-05A	Adapter for 0.5 mL Tubes	6/pack
ES89425-02A	Adapter for 0.2 mL Tubes	6/pack

## High Speed Microcentrifuge

- Full Color Touch Screen
- 1 Button program recall
- Rotor accepts tubes and strips
- Compact design 9 x 12 x 7.75 in
- Unique airflow system, keeps samples cool



Cat. No.	Description	UOM
ES86448	MicroCentrifuge w/ 24 place rotor	Each
ES89425-05A	Optional adapters for 0.5 mL tubes	6/Pack

## Horizon mini E Centrifuge, 642E

- Designed for doctor's offices and small labs
  - Compact design takes up less than one square foot of space
  - Unique horizontal rotor design allows for tubes up to 10 mL to be inserted at a 45° angle
  - Provides full horizontal separation of tubes
  - Clear lid for sample observation and optical calibration
- Capacity:** Six tubes up to 17 mm x 100 mm  
**Speed:** 3,380 rpm (1,600 x g)



Cat. No.	Description	UOM
ESC642E	Horizon mini E Centrifuge, model 642E	Each
ESC642E-05	Adapter for tubes 0.5 mL to 1 mL	Each
ESC642E-15	Adapter for tubes 1.5 mL to 2 mL	Each



## LC-8 Laboratory Centrifuge

**Speed:** LC-8: 400-3500 rpm (1500 x g)

LC-8 Plus: 400-5000 rpm (3070 x g)

**Capacity:** 8 x 15 mL

**Accel/Decel:** LC-8: 9 sec./25 sec. LC-8 Plus: 19 sec./39 sec.

**Increment:** 100rpm increments

**Timer:** 20 sec. to 99 min

**Dimensions:** 11.6 x 14.4 x 8.3 in.

**Weight:** 15 lbs/6.8kg

Electrical: 115V, 50Hz



Cat. No.	Description	UOM
ES86440	LC-8 Centrifuge with 8 x 15 mL rotor	Each
ES86440P	LC-8 Plus Centrifuge with 8 x 15 mL rotor	Each
ES86440-BCA	Optional adapters for 5 mL & 7 mL blood collection/culture tubes	8/pack
ES84687	Optional adapters for 5 mL centrifuge tubes	8/pack

## AzerFuge Mini Centrifuge

- Ideal for quick spin downs of microtubes and PCR tubes
- Includes 8 position microtube rotor and 0.2 mL PCR tube/strip rotor which is stored in the bottom of the centrifuge

**Maximum Speed:** 6,000 rpm/2000 x g

**Capacity:** 8 x 1.5/2.0 mL tubes

32 x 0.2 mL PCR tubes

4 x PCR strips (8x0.2mL)

**Dimensions:** 5.7 x 6.9 x 4.5 in.

**Weight:** 2.2 lbs



Cat. No.	Description	UOM
ES89421B	AzerFuge Mini Centrifuge, blue lid	Each

## Z100A Clinical Centrifuge

- Includes a 6 x 15 mL fixed angle rotor
  - Optional adapters accept smaller tubes (sold separately)
  - Equipped with a clear lid for visualizing the rotor
  - Safety interlock cuts the power to centrifuge when lid is opened
  - Rugged ABS housing provides durability
- Capacity:** 6 x 15 mL tubes
- Variable Speed:** up to 4,000 rpm/1,900 x g



Cat. No.	Description	UOM
ESCZ100A	Z100A Clinical Centrifuge	Each
ESC020017A	Combination Adapter for 5 and 7 mL tubes	8/pack

## AzerFuge 5

- Quick spin downs of a variety of tubes, including our popular 5 mL tube
- Includes adapters for 5 mL blood tubes
- 0.2/0.5 mL tubes and PCR strip adapters and rotor sold separately
- Simple start and stop with lid opening

**Capacity:** 4 x 5 mL tubes

4 x 1.5/2.0 mL

**Speed:** 5,500 rpm/2,000 x g



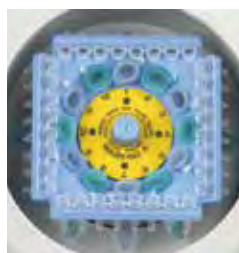
Cat. No.	Description	UOM
ESCM5	AzerFuge 5	Each
ESCM5-A2	Adapter for 0.2 mL tubes	Each
ESCM5-R15P	Rotor for 12 x 1.5 mL and 4 PCR strips	Each





## AzerFuge 12 Mini Centrifuge

- 12 place combination rotor accommodates both microcentrifuge tubes and PCR strips
  - Holds up to 4 x 8-tube PCR strips and/or 12 microcentrifuge tubes
  - Simple start and stop with the closing and opening of the lid
  - Quiet while operating
  - Compact, low-profile design
  - Takes up little bench space at just 5.5" wide and 4.5" tall
- Speed:** 2,000 x g (5,500 rpm)



Cat. No.	Description	UOM
ES59810	AzerFuge 12 Mini Centrifuge	Each

To shop our selection of **PCR strips**, see page 31.

## Z326 Universal Centrifuge

- Advanced microprocessor controls allow for instant rotor identification, which automatically converts the rotational speed to the relevant g-force, preventing the ability to set a speed above the capabilities of the installed rotor.
- Truly universal with 17 rotor options, including high speed angled rotors and swinging bucket rotors.

**Capacity:** 8 x 50 mL and 12 x 15 mL

**Max Speed:** 18,000 rpm/23,542 x g



Cat. No.	Description	UOM
ESCZ326	Z326 Universal Centrifuge (without rotor)	Each
ESCZ326-K	Z326 Universal Centrifuge, refrigerated model (without rotor)	Each

## Z206A Compact Centrifuge

- Microprocessor maintains precise control over operation of centrifuge with feedback loops, ten levels of acceleration and deceleration, and an imbalance sensor
- Cold room compatible
- Three angle rotors are available for use with the Z206A
- Also accommodates a swing-out rotor (6 x 5 mL tubes)

**Capacity:** 6 X 50 mL and 12 x 15 mL

**Maximum Speed:** 6,000 rpm/4,180 x g



Cat. No.	Description	UOM
ESC206A120	Z206A Universal Compact Centrifuge (rotor not included)	Each
ESC20095	Angle Rotor, 18 x 1.5 mL w/ shields	Each
ESC20096	Angle Rotor 12 x 15 mL	Each
ESC20097	Angle Rotor, 6 x 50 mL	Each
ESC020017A	Centrifuge Adapter for 5 mL and 7 mL tubes	8/pack
ESC1205	Individual Adapters for 0.5/0.6 mL tubes	6/pack
ESC1206	Individual Adapters for 0.4/0.25 mL tubes	6/pack
ESC1222	Individual Adapters for 0.20 mL thermal cycling tube	6/pack
ESC2328B	Adapter, 15 mL conical and round bottom in 50 mL rotor	6/pack
ESC2329B	Adapter for 5/7/10 mL tubes	6/pack

## Z446 High Capacity Refrigerated Centrifuge

- Advanced microprocessor controls allow for instant rotor identification, which automatically converts the rotational speed to the relevant g-force, preventing the ability to set a speed above the capabilities of the installed rotor.
- Rotor exchange is simple and can be done in less than 1 minute with included rotor wrench.

**Capacity:** 4 x 750 mL

**Max Speed:** 16,000 rpm/24,325 x g

- **Temp Range:** -20° - 40° C



Cat. No.	Description	UOM
ESC0446-K	Z446 K High Capacity Refrigerated Centrifuge, without rotor	Each



## FlatSpin Stirrer

This flat, compact stirrer meets your stirring needs without taking up bench space. Features automatic reverse rotation to provide the user with excellent stirring results.

**Speed Range:** 15-1000 rpm

**Plate Material:** ABS

**Maximum Load:** 2.0 kg

**Dimensions:** 175 x 120 x 15 mm

**Maximum Volume:** 0.8 L

**Weight:** 0.3 kg

**Work Plate Dimensions:** 90 x 90 mm

**Electrical:** 100-240 VAC, 50/60 Hz



Cat. No.	Description	UOM
ES593212	FlatSpin Analog Stirrer	Each

## Digital Hotplates, Stirrers & Hotplate Stirrers

- Features a durable, chemical resistant, white ceramic work surface
- Large backlit LCD display
- Advanced microprocessor controls allow quick, precise adjustment of speed and temperature

**Speed Range:** 200-1500 rpm

**Temperature Range:** Ambient +5 to 380°C

**Platform:** 6.5 x 6.5 in

**Dimensions:** 7 x 10.5 x 4 in



Cat. No.	Description	UOM
ES59303	Digital Hotplate	Each
ES59313	Magnetic Stirrer	Each
ES59325	Digital Hotplate/Stirrer	Each

## Shakers

The shakers take up less bench space and fit into most hoods and incubators. The microprocessor controls allow consistent and uniform shaking. Various safety features are included such as overload protection and a speed ramping feature that slowly increases speed to avoid splashing.



Product Family	Rocking Shaker	Rocking Shaker	Waving Shaker	Waving Shaker	Reciprocating Shaker
Model	ES59474-DR	ES59474-AR	ES59474-DW	ES59474-AW	ES59474-DRP
Speed Range	1 to 50 rpm*	1 to 75 rpm*	1 to 30 rpm*	1 to 75 rpm*	20 to 300 rpm
Timer	1 second to 160 hours	1 minute to 120 minutes	1 second to 160 hours	1 minute to 120 minutes	1 second to 160 hours
Motion	Rocking	Rocking	Waving	Waving	Reciprocating
Orbit	Tilt Angle: 0 to 15°	Tilt Angle: 0 to 15°	Tilt Angle: 0 to 20°	Tilt Angle: 0 to 16°	Stroke: 19 mm
Max Weight Capacity	10 lbs**	16 lbs**	5 lbs**	5 lbs**	15 lbs
Audible Alarm	✓	-	✓	-	✓
Load Sensor	-	-	-	-	✓
Motor Type	Stepper Motor	Stepper Motor	Stepper Motor	Stepper Motor	Brushless DC Motor
CO <sub>2</sub> Environment	✓	-	✓	-	✓
Overload Protection	✓	-	✓	-	✓
User Calibration (Speed)	-	-	-	-	✓
RS232 Interface	-	-	-	-	✓
Included Tray (L x W)	12.75" x 10"	14" x 11"	11.75" x 8.75"	14" x 11"	11" x 13"
Tray/Platform Options (L x W)	Stacking Tray	Stacking Tray	Stacking Tray	-	11" x 13", 13" x 13", 18" x 18", 18" x 24" Adjustable Platform Separatory Funnel Platform

\* Maximum speed/tilt angle may vary with heavy or unbalanced loads. \*\* Centered on tray.





3-D Rocker



2-D Rocker



3-D Shaker

## Rockers & Shakers

Cat. No.	ES3358	ES3357	ES3356	ES3361	ES3359
Description	3-D Rocker	Mini 3-D Rocker	2-D Rocker	3-D Shaker	Mini 3-D Shaker
Included Mat	Flat mat	Flat mat	Flat mat	Dimpled mat	Dimpled mat
Capacity	3.5 lbs/1.6 kg		7 lbs/3.2 kg	3.5 lbs/1.6 kg	
Speed	10 rpm (fixed)		12 rpm (fixed)	24 rpm (fixed)	
Tilt Angle	+/- 8°		+/- 8°	+/- 20°	
Operating Temp.	+4 to +65°C		+4°C to +65°C	+4°C to +65°C	
Dimensions	12" x 12" x 8"	10.5" x 7.5" x 8"	13.5" x 11.8" x 4.7"	12" x 12" x 8"	10.5" x 7.5" x 8"
Weight	4.4 lbs / 2.0 kg		6.5 lbs / 3.0 kg	4.4 lbs / 2.0 kg	
Electrical	115V, 60Hz		115V, 60Hz	115V, 60Hz	
Usage	Gel blotting, washing, staining			Mixing blood & centrifuge tubes	

## Rockers | Variable Speed

Cat. No.	ES59450	ES59452
Description	2-D Rocker	3-D Rocker
Platform Size	14 x 12 in.	12 x 12 in.
Capacity	4.4 lbs/2.0 kg	
Speed	Variable, 3-70 rpm	Variable, 2 to 30 rpm
Tilt Angle	Variable, 0 to 30°	
Operating Temp.	+4 to +45°C	
Dimensions	14 x 12 x 8 in.	
Weight	7.5 lbs / 3.4 kg	
Electrical	115V, 60Hz	
Usage	Gel blotting, washing, staining	



## Orbital Microplate Shaker | Variable Speed

Cat. No.	ES59438
Description	Orbital Microplate Shaker
Capacity	Up to 4 microplates
Speed	Variable, 200 to 1500 rpm
Operating Temp.	+4 to +65°C
Dimensions	13.1 x 11.74 x 4.7 in
Weight	12 lbs / 5.5 kg
Electrical	100-240V, 60Hz



## Mats & Stacking Platforms

Cat. No.	Description	UOM
ES3374	Flat Mat, large, 12" x 12"	Each
ES3375	Dimpled Mat, large, 12" x 12"	Each
ES3379	Flat Mat, small, 10.5" x 7.5"	Each
ES3380	Dimpled Mat, small, 10.5" x 7.5"	Each
ES3372	Platform w/ flat mat, 12" x 12"	Each
ES3378	Platform w/ dimpled mat, 10.5" x 7.5"	Each



## Analytical Balances

Analytical balances incorporate electromagnetic sensor technology and precision mechanical components to offer superior weight determinations to a fraction of a milligram. Two capacity ranges are available in the Analytical Balance line to weigh samples up to 120g or 210g. Readability for both ranges is 0.0001g (0.1mg).

- Available with Quick-Cal™ internal calibration feature.
- RS232 port for data output to a computer or printer.
- Multiple mode options (standard weighing, count mode, & percent).

Cat. No.	ES59130-120	ES59130-210	ES59130-120C	ES59130-210C
Capacity	120 grams	210 grams	120 grams	210grams
Readability	0.0001 grams	0.00001 grams	0.0001 grams	0.0001 grams
Draft Shield	External		Internal	
Draft Shield	Yes, Glass		Yes, Glass	
Pan Size (Round)	90mm/3.5 in.			
Weighing Units	gram, ounces, pounds, carats			
Display	LCD			
Exterior Dim.	32 x 47 x 28 cm 12.5 x 18.5 x 11 in			



## Valor 2000® Compact Bench Scale

The Valor 2000 has a polycarbonate keypad that can endure contact with knives or sharp instruments. Safe to use in the weighing of liquids and in wet environments with a flow-thru design that ensures the scale remains clean and operational.

- Maximum Capacity: 60 lb (30 kg)
- Readability: 0.01 lb (5 g)
- Platform Size (LxW): 7.5 in x 9.5 in
- Dimensions (HxLxW): 4.9 in x 10.1 in x 11.3 in
- Power: AC adapter (included), Rechargeable Battery (included)
- Battery Life: 50 hours with rechargeable battery
- Display: Dual red LED display
- Units of Measurement: gram, kilogram, ounce, pound, pound:ounce



Cat. No.	Description	UOM
ES59162-XW30KG	Valor® 2000 Compact Bench Scale, 30 kg	Each

## Defender® 3000 Bench Scale

Ideal for general weighing when working in a damp environment or when it is essential to thoroughly clean the scale. Made of stainless steel with 4X/IP66 stainless steel indicator with tactile keys, LCD display, and built-in rechargeable battery

- Maximum Capacity: 132 lb (60 kg)
- Readability: 0.02 lb (10 g)
- Platform Size (LxW): 14 in x 12 in
- Dimensions (HxLxW): 22.5 in x 18.6 in x 12 in
- Power: AC adapter (included), Rechargeable Battery (included)
- Battery Life: 58 hours with rechargeable battery
- Display: LCD display with white backlight
- Units of Measurement: gram, kilogram, ounce, pound, pound:ounce



Cat. No.	Description	UOM
ES59167-VR60KG	Defender® 3000 Bench Scale, 60 kg	Each

Valor® and Defender® are registered trademarks of OHAUS Corporation.





## Azer Vortex Mixer

- Orbital vortex mixer provides instant vortexing
- Silicone feet and steel base for vibration damping
- Features an analog scale speed display
- Allows for touch or continuous operation

**Speed Range:** 0 to 2500 rpm

**Dimensions:** 5" x 5" x 6"



Cat. No.	Description	UOM
ES3362	Azer Vortex Mixer	Each
ES3362T	Universal Adapter for Foam Inserts	Each
ES3362T-6	Foam Test Tube Insert, 48 x 6 mm diameter	Each
ES3362T-10	Foam Test Tube Insert, 18 x 10 mm diameter	Each
ES3362T-12	Foam Test Tube Insert, 12 x 12 mm diameter	Each
ES3362T-16	Foam Test Tube Insert, 8 x 16 mm diameter	Each
ES3362T-20	Foam Test Tube Insert, 8 x 20 mm diameter	Each
ES3362P	Flat Head Platform Pad Insert	Each

## Mini Vortex Mixers

- Instantly vortexes samples up to 50 mL
- Pressure activated start/stop operation
- Small footprint at only 4 inches wide

**Fixed Speed:** 2,800 rpm



Cat. No.	Description	UOM
ES59484	Mini Vortex Mixer, gray	Each
ES59484B	Mini Vortex Mixer, blue	Each
ES59484G	Mini Vortex Mixer, green	Each
ES59484P	Mini Vortex Mixer, purple	Each
ES59484R	Mini Vortex Mixer, red	Each

## General Purpose Water Baths

Available in three different volumes to suit any lab's needs. All three models can be set to "boiling mode", which requires a stainless steel lid (sold separately). Each unit comes with a polycarbonate lid, with a recessed control panel to protect against spills.

**Temp. Range:** +5°C to 100°C (boiling mode)

**Temp. Setting Range:** 0°C to 100°C in 0.1°C increments

**Timer:** Settable up to 99 hours 59 minutes

Cat. No.	Description	UOM
<b>Water Baths</b>		
ES4523	6 L Water Bath, 115 V, 13.25"x 8.25"x 9.88"	Each
ES4525	14 L Water Bath, 115 V, 13.25"x 15.13"x 9.63"	Each
ES4527	28 L Water Bath, 115 V, 13.25"x 22.13"x 11.63"	Each
<b>Accessories</b>		
ES4540	Stainless Steel Lid, for 6 L water baths (ES4523)	Each
ES4541	Stainless Steel Lid, for 14 L water baths (ES4525)	Each
ES4542	Stainless Steel Lid, for 28 L water baths (ES4527)	Each
ES4543	Polypropylene Sphere, for 6 L water baths (ES4523)	300/pack





## Digital Water Baths

The Digital Water Baths are designed to guarantee superior accuracy and performance in a compact footprint. They include easy to use controls to allow the user to select monitor settings. High efficient insulation maintains temperature stability and uniformity within the bath, while keeping the housing cool to the touch.

**Temp. Range:** +5°C to 100°C

**Temperature Accuracy:** +0.2°C (2 and 4 L)

**Temperature Accuracy:** +0.5°C (8 and 12 L)

**Temperature Increments:** 1.0°C (2 L)

**Temperature Increments:** 0.1°C (4, 8, 12 L)

**Temperature Uniformity:** ± 0.2°C at 37°C



Cat. No.	Description	UOM
<b>Water Baths</b>		
ES89551	2 L Digital Water Bath	Each
ES89553	4 L Digital Water Bath	Each
ES89555	8 L Digital Water Bath	Each
ES89557	12 L Digital Water Bath	Each
<b>Accessories</b>		
ES89559-R1550	Tube Rack for 15 x 50 mL tubes, fits ES89553 4L digital water bath only	Each
ES89559-R3050	Tube Rack for 30 x 50 mL tubes, fits 8 L and 12 L water baths, ES89555 and ES89557	Each
ES89559-R40015	Tube Rack for 48 x 1.5/2.0 mL tubes, fits 4 L, 8 L, and 12 L digital water baths, ES89553, ES89555, ES89557	Each
ES89559-R4005	Tube rack for 40 x 0.5 mL tubes, fits 4 L, 8 L, 12 L digital water baths, ES89553, ES89555, ES89557	Each
ES89559-R4115	Tube Rack for 41 x 15 mL tubes, fits 4 L digital water bath only, ES89553	Each
ES89559-R7615	Tube Rack for 76 x 15 mL tubes, fits 8 L and 12 L digital water baths, ES89555 and ES89557	Each

## Orbital & Reciprocating Water Baths

This water bath is a great choice when conducting northern and southern hybridizations, de-staining of gels, incubation of cells or bacterial cultures, and wash processes.

**Temp. Range:** +5°C to 99°C

**Speed Range:** 20 to 200 rpm

**Timer:** Settable up to 99 hours 59 minutes

Cat. No.	Description	UOM
<b>Water Baths</b>		
ES4529	Orbital and Reciprocating Water Bath, 115 V, 50/60 Hz	Each
<b>Accessories</b>		
ES4542	Stainless Steel Gabled Lid for Orbital & Reciprocating Water Bath	Each
ES4532	Flask Tray for Orbital & Reciprocating Water Bath	Each
ES4531	Tray for Tube Racks for ES4533-ES4538, holds 5 racks	Each
ES4533	Test Tube Rack for 48 x 10 mm tubes	Each
ES4534	Test Tube Rack for 44 x 13 mm tubes	Each
ES4535	Test Tube Rack for 24 x 16 mm tubes	Each
ES4536	Test Tube Rack for 21 x 19 mm tubes	Each
ES4537	Test Tube Rack for 12 x 25 mm tubes	Each
ES4538	Test Tube Rack for 10 x 30 mm tubes	Each
ES4539	Perforated Tray for Water Bath	Each







## General Purpose Laboratory Freezer and Refrigerator Combination

- Operating temperature: +4°C refrigerator, -10°C freezer
- Auto defrost, forced air
- Adjustable temperature control, independent for refrigerator and freezer
- 3 adjustable sliding full width shelves (refrigerator)
- 1 adjustable shelf (freezer compartment)

**Interior Dimensions- Refrigerator (H x W x D):** 39.5 in X 26 in X 26.5 in

**Interior Dimensions- Freezer (H x W x D):** 17.25 in X 24 in X 22 in

**Overall Dimensions (H x W x D):** 69 in X 30 in X 34 in

**Cubic Feet (Refrigerator):** 15

**Cubic Feet (Freezer):** 5.5

**Number of Shelves:** 4

**Shelf Area:** 12.1

**Refrigerant:** R-134a

**Total Amp Draw:** 6



Cat. No.	Description	UOM
ES59821-20	General Purpose Refrigerator and Freezer Combination, 20 cu. ft.	Each

## Premier Laboratory Refrigerator

- Operating temperature: 2°C to 10°C
  - Automatic defrost and condensate evaporation
  - Magnetic door gasket for positive seal
  - 3 coated wire shelves per door section
- Interior Dimensions (H x W x D):** 59 in X 51 in X 30 in
- Overall Dimensions (H x W x D):** 79.625 in X 55 in X 34.875 in
- Cubic Feet:** 52
- Number of Shelves:** 6
- Shelf Area:** 28.6 ft<sup>2</sup>
- NEMA Receptacle:** 5-15R
- Refrigerant:** R-134a
- Total Amp Draw:** 8



Cat. No.	Description	UOM
NSPR522WWW/0	Premier 2 door refrigerator	Each

## General Purpose Laboratory Freezer

- Operating temperature: -10°C to 25°C
- Manual defrost
- Magnetic door gasket for positive seal
- 4 fixed shelves

**Interior Dimensions (H x W x D):** 57 in X 27 in X 24 in

**Overall Dimensions (H x W x D):** 73.25 in X 34 in X 32.75 in

**Cubic Feet:** 20.6

**NEMA Plug Configuration:** 5-15P

**NEMA Receptacle:** 5-15R

**Refrigerant:** R-134a

**Total Amp Draw:** 5



Cat. No.	Description	UOM
LF201WWW/0M	General Purpose Laboratory Freezer, 20 cu. ft.	Each

## White Diamond Glass Door Upright Laboratory Refrigerator

- One swing glass door, self closing
  - Operating temperature: 1°C to 10°C
  - Magnetic door gasket for positive seal
- Interior Dimensions (H x W x D):** 52.5 in X 22 in X 25.25 in
- Overall Dimensions (H x W x D):** 82.5 in X 26.875 in X 34.75 in
- Cubic Feet:** 23
- Number of Shelves:** 5
- NEMA Receptacle:** 5-15R
- Refrigerant:** R-134a
- Total Amp Draw:** 3



Cat. No.	Description	UOM
NSWDR231WWG/0	White Diamond Glass Door Upright Laboratory Refrigerator, 23 cu. ft.	Each

## General Purpose Undercounter Refrigerator

- Mechanical thermostat
  - Operating temperature: 0°C to 10°C
  - Magnetic door gasket for positive seal
- Interior Dimensions (H x W x D):** 27.5 in X 17.25 in X 17.5 in
- Overall Dimensions (H x W x D):** 32.25 in X 21.25 in X 21.75 in
- Cubic Feet:** 23
- Number of Shelves:** 2 adjustable/ 1 fixed
- NEMA Receptacle:** 5-15R
- Refrigerant:** R-134a
- Total Amp Draw:** 0.90



Cat. No.	Description	UOM
PR041WWW/0	General Purpose Undercounter Refrigerator, 5 cu. ft.	Each



## Nitrile Plus Biodegradable Gloves

Azer's nitrile plus gloves with EcoTek™ provides all the benefits of biodegradability without sacrificing performance, safety or durability. The Nitrile Plus glove with EcoTek is 92.6% biodegradable in 945 days in landfills.



- Color: Black
- SW Grip
- 9.0" length
- Tear-resistant cuff
- Thickness:
  - Finger: 5.6mil, 0.14mm
  - Palm: 5.0mil, 0.13mm
  - Cuff: 4.1mil, 0.10mm



- Color: Teal
- SW Grip
- 9.5" length
- Tear-resistant cuff
- Thickness:
  - Finger: 5.8mil, 0.15mm
  - Palm: 5.0mil, 0.13mm
  - Cuff: 3.9mil, 0.10mm

Cat. No.	Description	UOM
ES86121S	Nitrile Plus gloves, black, S	100/ box, 10 boxes/case
ES86121M	Nitrile Plus gloves, black, M	100/box, 10 boxes/case
ES86121L	Nitrile Plus gloves, black, L	100/box, 10 boxes/case
ES86121XL	Nitrile Plus gloves, black, XL	100/box, 10 boxes/case
ES86122S	Nitrile Plus gloves, teal, S	100/box, 10 boxes/case
ES86122M	Nitrile Plus gloves, teal, M	100/box, 10 boxes/case
ES86122L	Nitrile Plus gloves, teal, L	100/box, 10 boxes/case
ES86122XL	Nitrile Plus gloves, teal, XL	100/box, 10 boxes/case

## Nitrile Gloves

- Powder free nitrile examination glove
- Soft formulation nitrile conforms to your hand effortlessly
- Thinner, lighter and more flexible than standard nitrile gloves
- Textured fingers provide a non-slip grip
- Cost effective volume packaging, 300 gloves per box



Cat. No.	Description	UOM
ES86141XS	Nitrile gloves, XS	300/box, 10 boxes/case
ES86141S	Nitrile gloves, S	300/box, 10 boxes/case
ES86141M	Nitrile gloves, M	300/box, 10 boxes/case
ES86141L	Nitrile gloves, L	300/box, 10 boxes/case
ES86141XL	Nitrile gloves, XL	270/box, 10 boxes/case

## Azer Broken Glass Keepers

- Sturdy, corrugated cardboard
- Assembly instructions on each box
- Floor model

Cat. No.	Description	UOM
ES86687	Azer Broken Glass Keepers, with lids and plastic liners	6/pack



## Ultra Nitrile Gloves



- Color: Black
- Sweat management
- 11" extended-cuff
- Tear-resistant cuff
- Irritant free
- Thickness:
  - Finger: 10.1mil, 0.26mm
  - Palm: 8.5mil, 0.22mm
  - Cuff: 7.0mil, 0.18mm



- Color: Green
- Aloe infused
- Sweat management
- 11" length
- Oil/wet grip
- Thickness:
  - Finger: 10.1mil, 0.26mm
  - Palm: 8.5mil, 0.22mm
  - Cuff: 7.0mil, 0.18mm

Cat. No.	Description	UOM
ES86128S	Ultra Nitrile gloves, black, S	50/ box, 10 boxes/case
ES86128M	Ultra Nitrile gloves, black, M	50/box, 10 boxes/case
ES86128L	Ultra Nitrile gloves, black, L	50/box, 10 boxes/case
ES86128XL	Ultra Nitrile gloves, black, XL	50/box, 10 boxes/case
ES86127S	Ultra Aloe Nitrile gloves, green, S	50/box, 10 boxes/case
ES86127M	Ultra Aloe Nitrile gloves, green, M	50box, 10 boxes/case
ES86127L	Ultra Aloe Nitrile gloves, green, L	50/box, 10 boxes/case
ES86127XL	Ultra Aloe Nitrile gloves, green, XL	50/box, 10 boxes/case

## Latex Gloves

- Powder-free
- Our latex plus glove provides consistent grip, dry or wet
- Packaging: 100 gloves/box
- Available in S, M, L, XL

For ordering, add appropriate size abbreviation to end of Cat. No.



Cat. No.	Description	UOM
ES3681	Latex Glove, plus	10 boxes/case

## Lab Coats

- Features three pockets and a front snap closure
- Protects against splash and spray of blood, body fluids, or chemicals
- Subject to OSHA Directive(s) 29 CFR 1910 and OSHA Enforcement Procedure(s) CPL 02-02.069
- Material is anti-static, with high fluid-resistance
- Available in XS, S, M, L, XL

For ordering, add appropriate size abbreviation to end of Cat. No.

Cat. No.	Description	UOM	White	Purple
ES86411	Lab Coat, white	10/pack		
ES86412	Lab Coat, blue	10/pack		
ES86415	Lab Coat, teal	10/pack		
ES86417	Lab Coat, purple	10/pack		
ES86419	Lab Coat, pink	10/pack		





## Light Duty Task Wipes

- Low particulate, non-streak cleaning
- Extra absorbency performance
- Sensitive and delicate parts wiping
- Anti-static cover



Cat. No.	Description	UOM
ES86692	Azer light duty task wipes, small	280/box, 60 boxes/case
ES86694	Azer light duty task wipes, large	140/box, 15 boxes/case

## Sticky Mats for Laboratory

- Help to capture dust and dirt from foot traffic into laboratory
- Cohesive, anti-microbial layer peels off when it becomes dirty
- Reduces potential for the spreading of germs and bacteria
- Ideal for histology labs



Cat. No.	Description	UOM
ES3693B	Sticky Mat, 24" x 36", 30 sheets, blue	8/case
ES3694B	Sticky Mat, 36" x 45", 30 sheets, blue	8/case
ES3694W	Sticky Mat, 36" x 45", 30 sheets, white	8/case

## Biohazard Splash Guard

- Made of clear acrylic material
- Protects user from splatter and spray of fluids
- Angle provides excellent working environment

Cat. No.	Description	UOM
ES3939	Splash Guard, 8" x 18" x 10"	Each
ES3940	Splash Guard, 12" x 18" x 10"	Each
ES3941	Splash Guard, 12" x 23" x 15"	Each



## Lab Mat Bench Liner

- Allows for easy clean up and protects surfaces against stains, spills, and everyday wear
- Absorbs up to 420 mL/m<sup>2</sup> of various liquids
- Features a flexible backing made of polyethylene
- Roll dimensions: 20" wide x 300' long



Cat. No.	Description	UOM
ES4472	Lab Mat Bench Liner, 20" x 300' roll	2 rolls/case

## Azer Lab Wipes

- Low lint, heavy-duty, air-layered material
- For use as an absorbent work surface for cover slipping or general lab clean up
- Each wipe measures 12.5" x 13"
- 1/4 fold packaged in packs of 50



Cat. No.	Description	UOM
ES3900	Azer Lab Wipes	900/case

## Sharps Disposal Containers

- 0.9 L, puncture resistant container
- Autoclavable and incinerator safe
- Available in yellow and red



Cat. No.	Description	UOM
ES46381-4R	0.9 L Sharps Container, red	18/case
ES49831-4Y	0.9 L Sharps Container, yellow	18/case

## Cleaning Detergent

- Safe for glass, metal, and plastic
- No interfering residues
- USDA and FDA compliant
- For manual or ultrasonic cleaning



Cat. No.	Description	UOM
ES86655-1	Alconox® Powder Detergent, 4 lb. box	Each
ES86655	Alconox® Powder Detergent, 4 lb. box	4/case
ES86656-1	Liquinox® Liquid Detergent, gallon	Each
ES86656	Liquinox® Liquid Detergent, gallon	4/case
ES86658-1	Citranox® Liquid Acid Cleaner, gallon	Each
ES86658	Citranox® Liquid Acid Cleaner, gallon	4/case

## Flammable Safety Cabinets

- OSHA compliant
- Constructed of double walled 18-gauge steel
- Each cabinet is labeled with: "FLAMMABLE-KEEP FIRE AWAY"
- The self-closing doors feature a fusible link that melts at 71°C



Cat. No.	Description	UOM
ES86300	Safety Cabinet, 30 gallon, manual door	Each
ES86301	Safety Cabinet, 45 gallon, sliding door	Each
ES86311	Safety Cabinet, 45 gallon, self-closing door	Each

Alconox®, Liquinox®, and Citranox® are registered trademarks of Alconox, Inc.



2 Dimensional Rocker	65
24 Hour Urine Collection Containers	6
3 Dimensional Rocker	65
3 Dimensional Shaker	65
384 Well Plates	59
5 mL Centrifuge Tubes	60
96 Well Plates	58
96 Well Deep Plates	58

## A

Acid Fast Control Slides	30
Acid Fast Staining	29
Agar	25
Auto-Analyzer Sample Cups	9
Automated Pipette Filler	48
Autosampler Glass Inserts	7
Autosampler Glass Vials	7
AzerPro Repeating Pipettor	49

## B

Balances	66
Basic Fuchsin	29
Biodegradable Nitrile Gloves	70
Biohazard Bags	22, 38
Blood Bank Saline	3
Blood Collection Mixer	4
Blood Bank Transfer Pipets	3
Broken Glass Keepers	70

## C

Carbol-Kinyoun	29
Capmats	31, 57
Centrifuges	61
Centrifuge Tubes	11, 60
Centrifuge Tube Racks	60
Chemically Resistant Markers	40
Chromatography Columns	10
Clean Catch Urine Kit	38
Contact Plates	24
Control Slides	30
Coplin Jars	14, 44
Copper Sulfate	3
Counting Chambers	19, 42
Cover Glass	43
Cryptosporidium Control Slides	30

## C

Cytology Brushes	11
Cytology Fixative Spray	13
Cytology Funnels	12
Cytology Preservative Solution	13
Cytology Spin Slides	11
Cytology Stains	13
Cytology Swabs	11

## D

Depression Slides	41
Detergent	71
Diagnostic Slides	41
Digital Water Bath	68
DuoClick™ Specimen Container	36
Dropper Bulbs	3, 47
Dry Baths	4

## E

EASY I Step Stain	18
EASY III™ Stain	13, 18
EASY Pap Cytology Stain	13
Electronic Pipettes	54
ELISA Plates	34
Eosinophil	29
ESR Starter Kit	20
ESR System	20

## F

Filter Pipet Tips	50
Flammable Safety Cabinet	71
Flourescent Staining Reagents	29
Flow Tubes™ for Flow Cytometry	20
Freezers	69
Frosted Slides	16, 40

## G

Giemsa Stain	17
Glass Inserts	7
Glass Staining Dish	14, 44
Glass Test Tubes	3, 8
Glass Vials	7
Gloves	70
Glucose Drinks	5
Gomori Trichrome Stain	29
Graduated Cylinder	10



**G**

Gram Stain Control Slides	30
Gram Staining	29

**H**

H & E Stainer	15
Hansel Stain	29
hCG Pregnancy Urine Test	38
Hema-Tek® Stain Packs	17
Hemocytometer	19, 42
Hemocytometer Cover Glass	42
Hematocrit Centrifuge	20
Hematology Analyzer Slides	16
Hematology Rinse Solution	18
Homogenizer Tubes	33
Hotplates	64
HPLC Grade Solvents	7
HydraFlock® Swabs	21

**I**

Incubators	26
Infant Heel Warmers	9
Infrared Microsterilizer	25
Inoculating Loops	25

**L**

Lab Coats	70
Lab Mat Bench Liner	71
Lab Wipes	71
Lacto Phenol Cotton Blue	29
Latex Gloves	70
LC-MS Grade Solvents	7
Linear Stainer	15
Liquid Amies Transport System	22
Low Binding Microcentrifuge Tubes	31
Lugol's Iodine Solution	29

**M**

Malachite Green Solution	29
Magnetic Well-Plates	57
Mats for Shakers	65
Medio Plates	58
Microcentrifuge Tubes	60
Microhematocrit Capillary Tubes	20
Microplates	57
Microplate Absorbance Reader	35

**M**

Microscope Slides	
AzerBond™ for IHC	40
Depression (Well)	41
Diagnostic	41
Frosted	16, 40
Hematology Analyzer	16
Histobond™	41
Plain	16, 40
Sterile	41
Unifrost®	40
Microsporidia Control Slides	30
Microsterilizer	25
Microtube Homogenizer	33
MultiMax Pipette Tips	50

**N**

Nitrile Gloves	70
nUVaClean™ UV Pipette Carousel	51

**O**

OneTouch™ Pipette Tips	51
Orbital & Reciprocating Water Bath	68
Orbital Microplate Shaker	65

**P**

Pap Jars	11
Papanicolaou Cytology Stains	13
Parafilm® Sealing Film	25
Pasteur Pipettes	3, 47
PCR Reagents	32
PCR Strips	31
PCR Tubes	31
PCR Well Plates	31
Petri Dishes	23
Phosphate Buffer	18
Picus® Electronic Pipettor	54
Picus® NxT Electronic Pipettor	54
Pipets, Transfer	3, 46
Pipette Tips	49
Pipette Tips for Automation	55
Pipettors	49
Pipettor Storage	51
Plasma Thawer	4
Platelet Agitators	4
Platelet Incubators	4



**P**

Pneumocystis Control Slides	30
Proline® Plus Mechanical Pipette	53
Protozoa Stain Control Slides	30
PurFlock® Ultra Swabs	21
PVA Smears	30

**R**

Rapid Differential Stain	13, 18
Refrigerators	69
Repeating Pipettor	49
Reticulocyte Stain	18
Robotic Pipette Tips	55
Rockers	65
Rotofix 32 A Centrifuge	14
Rubber Bulbs	47

**S**

Saccomanno's Fixative	13
Scales	66
Sealing Film	31
Sealing Foil	31
Serological Pipettes	48
Serological Pipette Controller	48
Serological Pipette Storage Rack	48
Shakers	64
Sharps Container	71
Sickle Cell Solubility Kit	19
Simply Pure® Glucose Drink	5
Slide Cabinet	45
Slide Folders	45
Slide Mailers	45
Slide Storage Boxes	45
Specimen Containers, Urinalysis	36
Splash Guard	71
Square Well Plates	59
Stacking Platforms for Rockers	65
Staining Dishes, Glass	14, 44
Staining Jars	14, 44
Staining Trays	44
Sterile Slides	41
Sticky Mats	71
Stirrers	64
Swabs	21
Syringe Filters	8
Syringe Tips	49

**T**

Tacta Mechanical Pipette	53
Task Wipes	71
Test Tube Caps	8
Test Tubes, Glass	3, 8
Thermal Cyclers	34
Thermal Shakers	35
Transfer Pipets	3, 46
Turk Blood Diluting Fluid	18

**U**

Ultra Nitrile Gloves	70
Unifrost® Microscope Slides	40
UniTranz-RT™ Transport System	22
Urinalysis Slide	38
Urine Sediment Stain	38
Urine Sediment Tubes	38
Urine Specimen Containers	36
Urine Collection Kits	38

**V**

Volumetric Flask	10
Volumetric Pipette	10
Vortex Mixers	67

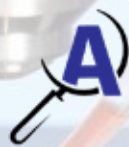
**W**

Water Baths	67
Well Plates	57
Wescor® Hematology Solutions	17
Wright's Stain	17
Wright's Stain Fixative	17
Wright-Giemsa Control Slides	18
Wright-Giemsa Stain	17

**X**

xPIPIETTE	52
xTIP4 LTS Compatible Pipette Tips	52





# Azer Scientific

*Serving Scientists Who Change The World®*



1-877-770-2937



701 Hemlock Road,  
Morgantown PA 19543



Info@AzerSci.com



www.AzerSci.com

Connect with Us:



An ISO 13845: 2016 Certified Company